

## 145 V PTC Thermistors for Overload Protection



### FEATURES

- Wide range of trip and non-trip currents:  
From 47 mA up to 1 A for the non-trip current
- Small ratio between trip and non-trip currents  
( $I_t/I_{nt} = 1.5$  at 25 °C)
- High maximum inrush current (up to 13 A)
- Leaded parts withstand mechanical stresses and vibration
- UL file E148885 according to XGPU standard UL1434
- Material categorization: for definitions of compliance please see [www.vishay.com/doc?99912](http://www.vishay.com/doc?99912)


**RoHS**  
COMPLIANT

### APPLICATIONS

Overload (current, voltage, temperature) protection in:

- Telecommunications
- Industrial electronics
- Consumer electronics
- Electronic data processing

### DESCRIPTION

These directly heated ceramic-based thermistors have a positive temperature coefficient and are primarily intended for overload protection. They consist of a ceramic pellet soldered between two tinned CCS wires and coated with a UL 94 V-0 high temperature hard silicone lacquer.

### MOUNTING

PTC thermistors can be mounted by wave, reflow, or hand-soldering. Current levels have been determined according IEC 60738 conditions. Different ways of mounting or connecting the thermistors can influence their thermal and electrical behavior. Standard operation is in still air, any potting or encapsulation of PTC thermistors is not recommended and will change its operating characteristics.

#### Typical Soldering

235 °C; duration: 5 s (Lead (Pb)-bearing)

245 °C; duration: 5 s (Lead (Pb)-free)

#### Resistance to Soldering Heat

260 °C; duration: 10 s max.

### MARKING

Only the grey lacquered thermistors with a diameter of 8.5 mm to 20.5 mm are marked with BC,  $R_{25}$  value (example 1R9) on one side and  $I_{nt}$ ,  $V_{max}$ . on the other side.

### QUICK REFERENCE DATA

PARAMETER	VALUE	UNIT
Maximum voltage (RMS or DC)	145	V
Maximum holding current ( $I_{nt}$ )	0.047 to 1	A
Resistance at 25 °C ( $R_{25}$ )	1.3 to 240	$\Omega$
Tolerance on $R_{25}$ value	20	%
Maximum overload current $I_{ol}$	0.2 to 13	A
Switching temperature	135 to 140	°C
Operating temperature range at max. voltage	0 to 70	°C
Storage temperature	-40 to +175	°C

### QUALITY

UL approved PTCs are guaranteed to withstand severe test programs and have factory audited follow-up programs. Major UL qualification tests are long-life (6000 cycles) electrical cycle tests at trip-current, long-life stability storage tests (3000 h at 250 °C), damp heat and water immersion tests and over-voltage tests up to 200 % of rated voltage.

UL approved PTCs are guaranteed to withstand severe test programs

- Long-life cycle tests (over 5000 trip cycles)
- Long-life storage tests (3000 h at 250 °C)
- Electrical cycle tests at low ambient temperatures (-40 °C or 0 °C)
- Damp-heat and water immersion tests
- Overvoltage tests at up to 200 % of rated voltage

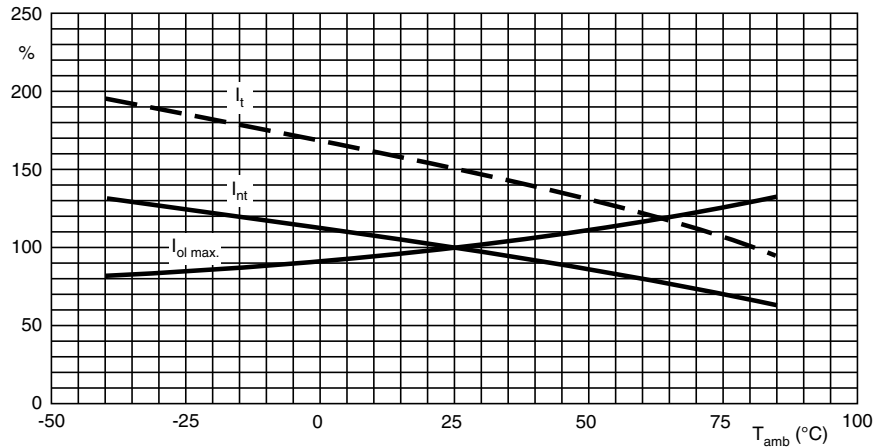


ELECTRICAL DATA AND ORDERING INFORMATION								
I <sub>nt</sub> MAX. at 25 °C (mA) <sup>(1)</sup>	I <sub>t</sub> MIN. at 25 °C (mA) <sup>(1)</sup>	R <sub>25</sub> ± 20 % (Ω)	I <sub>ol</sub> MAX. at 25 °C (mA) <sup>(2)</sup>	I <sub>res</sub> MAX. at V <sub>max.</sub> and 25 °C (mA) <sup>(1)</sup>	DISSIP. FACTOR (mW/K) <sup>(1)</sup>	Ø D MAX. (mm)	ORDERING PART NUMBERS	
							BULK	TAPE ON REEL
47	70	240	200	9	7.3	5	PTCCL05H470FBE	PTCCL05H470FTE
65	100	115	300	11	7.3	5	PTCCL05H650FBE	PTCCL05H650FTE
93	140	55	450	13	7.3	5	PTCCL05H930FBE	PTCCL05H930FTE
110	165	40	500	13	7.3	5	PTCCL05H1111FBE	PTCCL05H1111FTE
130	195	28	600	13	7.3	5	PTCCL05H1313FBE	PTCCL05H1313FTE
170	255	19	1000	15	8.3	7	PTCCL07H1717FBE	PTCCL07H1717FTE
210	315	12	1400	15	8.3	7	PTCCL07H2111FBE	PTCCL07H2111FTE
250	375	9.4	2000	16.5	9	8.5	PTCCL09H2511FBE	PTCCL09H2511FTE
270	405	8	2200	16.5	9	8.5	PTCCL09H2711FBE	PTCCL09H2711FTE
320	480	6.7	3000	19	10.5	10.5	PTCCL11H3211FBE	PTCCL11H3211FTE
360	540	5.3	3500	19	10.5	10.5	PTCCL11H3611FBE	PTCCL11H3611FTE
410	615	4.6	4500	22.5	11.7	12.5	PTCCL13H4111FBE	PTCCL13H4111FTE
450	675	3.8	5000	22.5	11.7	12.5	PTCCL13H4511FBE	PTCCL13H4511FTE
600	900	2.9	7200	28.5	15.5	16.5	PTCCL17H6011FBE	-
710	1065	2.1	8500	28.5	15.5	16.5	PTCCL17H7111FBE	-
880	1320	1.7	11 000	37.5	19.8	20.5	PTCCL21H8811FBE	-
1000	1500	1.3	13 000	37.5	19.8	20.5	PTCCL21H1021FBE	-

**Notes**

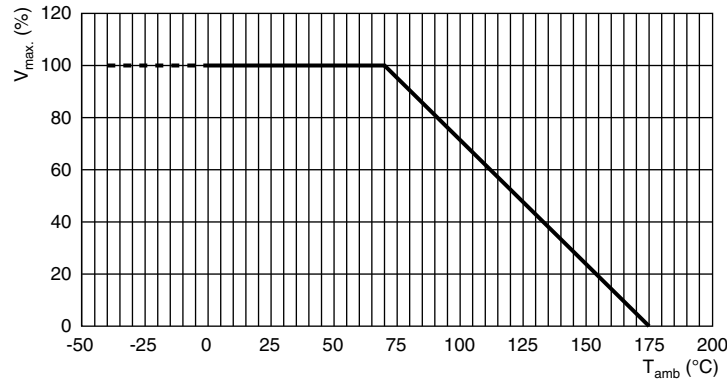
- <sup>(1)</sup> The indicated current levels are guaranteed according IEC 60738 mounting conditions. For different mounting conditions the indicated current levels can change and should be evaluated in the application.
- <sup>(2)</sup> I<sub>ol max.</sub> is the maximum overload current that may flow through the PTC when it passes from the low ohmic to the high ohmic state. UL approval: I<sub>ol max.</sub> x 0.85

**CURRENT DEVIATION AS A FUNCTION OF THE AMBIENT TEMPERATURE**

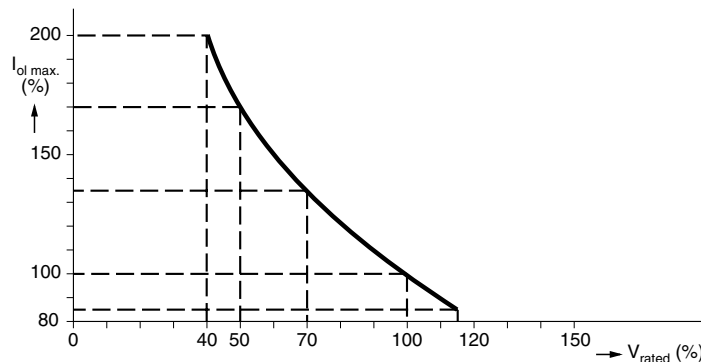




VOLTAGE DERATING AS A FUNCTION OF AMBIENT TEMPERATURE



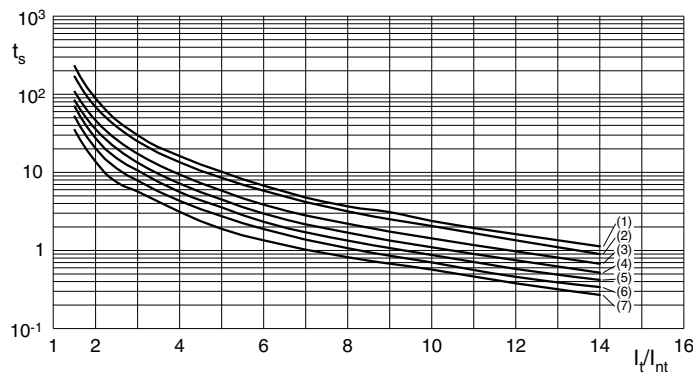
MAXIMUM OVERLOAD CURRENT I\_ol max. DERATING AS A FUNCTION OF VOLTAGE



I\_ol max. as stated in the electrical data and ordering information tables, is the maximum overload current that may flow through the PTC when passing from the low ohmic to high ohmic state at rated voltage.

When other voltages are present after tripping, the I\_ol max. value can be derived from the above I\_max. as a function of voltage graph. Voltages below V\_rated will allow higher overload currents to pass the PTC.

TYPICAL TRIP-TIME AS A FUNCTION OF TRIP CURRENT RATIO



- Curve 1: Ø D\_max. = 20.5 mm
Curve 2: Ø D\_max. = 16.5 mm
Curve 3: Ø D\_max. = 12.5 mm
Curve 4: Ø D\_max. = 10.5 mm
Curve 5: Ø D\_max. = 8.5 mm
Curve 6: Ø D\_max. = 7.0 mm
Curve 7: Ø D\_max. = 5.0 mm
Measured in accordance with "IEC 60738".

Trip-Time or Switching Time (t\_s)

To check the trip-time for a specific PTC, refer to the Electrical Data and Ordering Information tables for the value I\_nt. Divide the overload or trip current by this I\_nt and you realize the factor I\_t/I\_nt. This rule is valid for any ambient temperature between 0 °C and 70 °C. Adapt the correct non-trip current with the appropriate curve in the Current Deviation as a Function of the Ambient Temperature graph. The relationship between the I\_t/I\_nt factor and the switching time is a function of the PTC diameter; see the above graphs.

Example

What will be the trip-time at I\_ol = 0.8 A and T\_amb = 0 °C of a thermistor type PTCCL07H211FBE; 12 Ω; Ø D\_max. = 7.0 mm:

I\_nt from the table: 210 mA at 25 °C

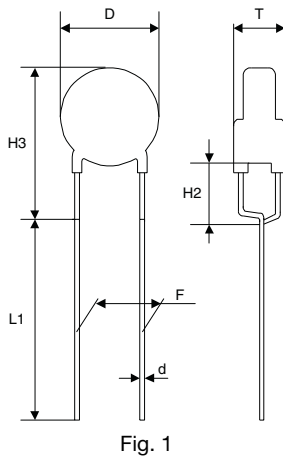
I\_nt: 210 x 1.12 = 235 mA (at 0 °C).

Overload current = 0.8 A; factor I\_t/I\_nt: 0.8/0.235 = 3.40. In the typical trip-time as a function of trip current ratio graph, at the 7.0 mm line and I\_t/I\_nt = 3.40, the typical trip-time is 6.0 s.



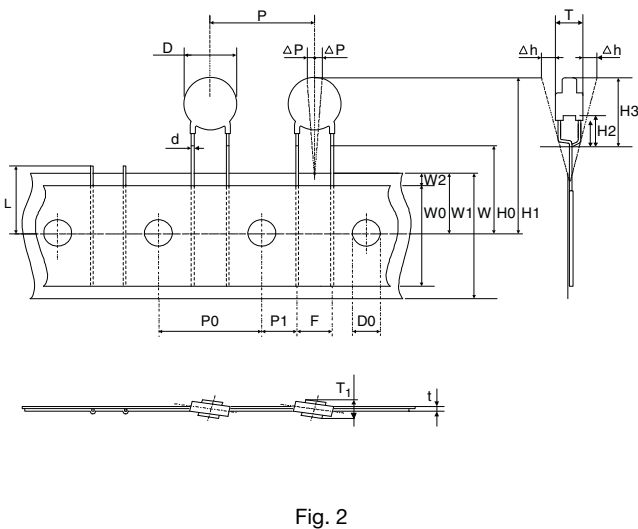
COMPONENTS PACKING INFORMATION			
SAP ORDERING PART NUMBER		SPQ	PACKING OUTLINE
PTCCL05H....BE		500	Bulk
PTCCL05H....TE		1500	Tape and reel
PTCCL07H....BE	PTCCL09H....BE	250	Bulk
PTCCL07H....TE	PTCCL09H....TE	1500	Tape and reel
PTCCL11H....BE	PTCCL13H....BE	200	Bulk
PTCCL11H....TE		1500	Tape and reel
PTCCL13H....TE		750	Tape and reel
PTCCL17H....BE		100	Bulk
PTCCL21H....BE		100	Bulk

**PTC THERMISTORS IN BULK**



DIMENSIONS OF BULK TYPE PTCs (in mm)	
D	See table
d	0.6 ± 0.05
T	5.0 max.
H2	4.0 ± 1.0
H3	D + 5 max.
L1	20 min.
F	5.0

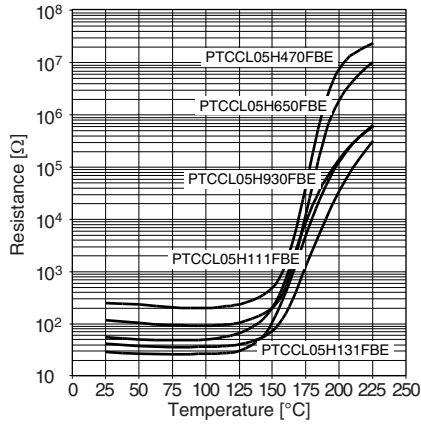
**PTC THERMISTORS ON TAPE AND REEL**



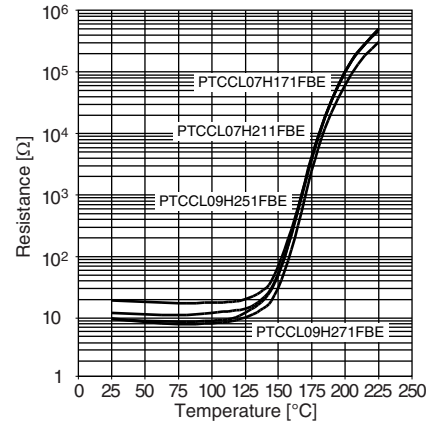
TAPE AND REEL ACCORDING TO IEC 60286-2 (in mm)			
SYMBOL	PARAMETER	DIMENSIONS	TOLERANCE
D	Body diameter	See table	max.
d	Lead diameter	0.6	± 0.05
P	Pitch of components Diameter < 12 mm Diameter ≥ 12 mm	12.7 25.4	± 1.0 ± 2.0
P <sub>0</sub>	Feedhole pitch	12.7	± 0.3
F	Leadcenter to leadcenter distance (between component and tape)	5.0	+ 0.5 / - 0.2
H0	Lead wire clinch height	16.0	± 0.5
H2	Component bottom to seating plane	4.0	± 1.0
H3	Component top to seating plane	D + 5	max.
H4	Seating plane difference (left-right lead)	2	± 0.2
T	Total thickness	5.0	max.



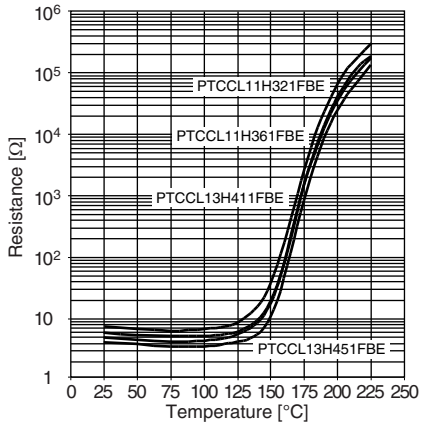
### TYPICAL RESISTANCE / TEMPERATURE CHARACTERISTIC



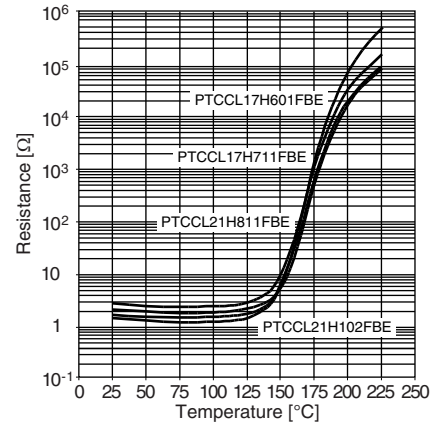
### TYPICAL RESISTANCE / TEMPERATURE CHARACTERISTIC



### TYPICAL RESISTANCE / TEMPERATURE CHARACTERISTIC



### TYPICAL RESISTANCE / TEMPERATURE CHARACTERISTIC





## **Disclaimer**

ALL PRODUCT, PRODUCT SPECIFICATIONS AND DATA ARE SUBJECT TO CHANGE WITHOUT NOTICE TO IMPROVE RELIABILITY, FUNCTION OR DESIGN OR OTHERWISE.

Vishay Intertechnology, Inc., its affiliates, agents, and employees, and all persons acting on its or their behalf (collectively, "Vishay"), disclaim any and all liability for any errors, inaccuracies or incompleteness contained in any datasheet or in any other disclosure relating to any product.

Vishay makes no warranty, representation or guarantee regarding the suitability of the products for any particular purpose or the continuing production of any product. To the maximum extent permitted by applicable law, Vishay disclaims (i) any and all liability arising out of the application or use of any product, (ii) any and all liability, including without limitation special, consequential or incidental damages, and (iii) any and all implied warranties, including warranties of fitness for particular purpose, non-infringement and merchantability.

Statements regarding the suitability of products for certain types of applications are based on Vishay's knowledge of typical requirements that are often placed on Vishay products in generic applications. Such statements are not binding statements about the suitability of products for a particular application. It is the customer's responsibility to validate that a particular product with the properties described in the product specification is suitable for use in a particular application. Parameters provided in datasheets and / or specifications may vary in different applications and performance may vary over time. All operating parameters, including typical parameters, must be validated for each customer application by the customer's technical experts. Product specifications do not expand or otherwise modify Vishay's terms and conditions of purchase, including but not limited to the warranty expressed therein.

Except as expressly indicated in writing, Vishay products are not designed for use in medical, life-saving, or life-sustaining applications or for any other application in which the failure of the Vishay product could result in personal injury or death. Customers using or selling Vishay products not expressly indicated for use in such applications do so at their own risk. Please contact authorized Vishay personnel to obtain written terms and conditions regarding products designed for such applications.

No license, express or implied, by estoppel or otherwise, to any intellectual property rights is granted by this document or by any conduct of Vishay. Product names and markings noted herein may be trademarks of their respective owners.