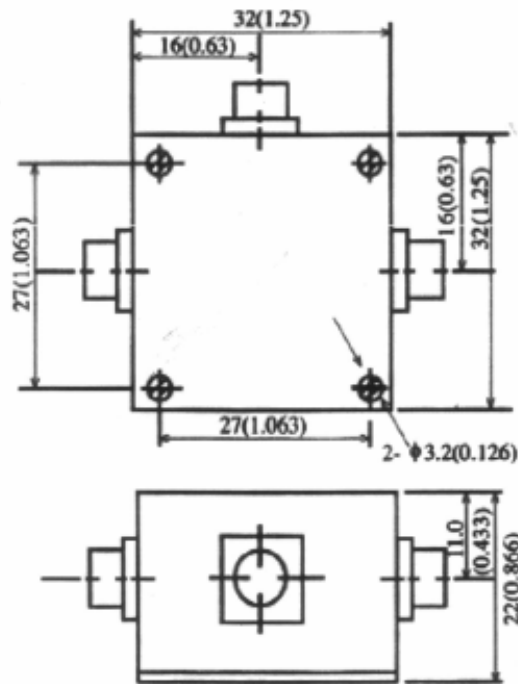


2-Way Power Divider

P/N: JXWBGF-T-2-2490-2690

Frequency Range(MHz)	2490-2690
Insertion Loss(dB)	0.3 max
Isolation(dB)	22 min
Input VSWR	1.25 max
Output VSWR	1.40 max
Amplitude Balance(dB)	0.3 max
Phase Balance(°)	1 max
Power Handling(W)	1 max
Connector	SMA-Female
Size(mm)	32x32x20
Net Weight(Kg)	0.06 Around

Outline Drawing (Size: mm)



For current data sheets, please contact: sales@aacix.com