

**Digital Attenuator, 50 dB, 6-Bit, TTL Driver
DC - 2.4 GHz**

**AT90-1106
V11**

Features

- Attenuation: 1 dB Steps to 50 dB
- Single Positive Supply
- Contains Internal DC to DC Converter
- Low DC Power Consumption
- Small Footprint, JEDEC Package
- Integral TTL Driver
- 50 ohm Impedance

Description

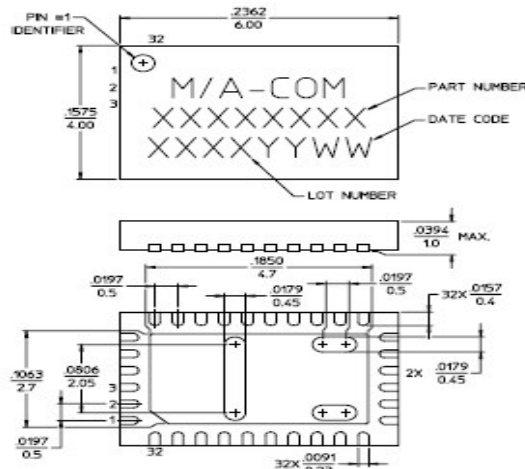
M/A-COM's AT90-1106 is a GaAs FET 6-bit digital attenuator with integral TTL driver. Step size is 1 dB providing a 50 dB total attenuation range. This device is in a FQFP-N plastic surface mount package. The AT90-1106 is ideally suited for use where accuracy, fast speed, very low power consumption and low costs are required. For dual supply designs without switching noise, use AT90-0106.

Pin Configuration

Pin No.	Function	Pin No.	Function
1	C16	17	NC
2	C8	18	NC
3	C4	19	+Vcc ²
4	C2	20	NC
5	C1	21	CP ⁴
6	C32	22	NC
7	GND	23	CP ⁴
8	NC	24	NC
9	NC	25	-Vee ³
10	NC ¹	26	GND
11	GND	27	RF2
12	RF1	28	GND
13	GND	29	NC ¹
14	NC	30	-Vee ^{3,5}
15	NC	31	NC
16	NC	32	+Vcc ^{2,6}

1. Pins 10 & 29 must be isolated
2. Pin 19 must be connected to Pin 32
3. Pin 25 must be connected to Pin 30
4. .01µF cap must be connected between Pins 21 and 23
5. -Vee is produced internally and requires a .1µF cap to GND. Generated noise is typical of switching DC-DC Converters.
6. +Vcc requires a .1µF cap to GND

CSP-1



NOTES: 1. REFERENCE JEDEC MO-220, FOR ADDITIONAL DIMENSIONAL AND TOLERANCE INFORMATION.
2. REFERENCE S209 APPLICATION NOTE FOR PCB FOOTPRINT INFORMATION.
3. ALL DIMENSIONS SHOWN AS INCHES/MM.

Ordering Information

Part Number	Package
AT90-1106	Bulk Packaging
AT90-1106TR	Tape and Reel (1K Reel)
AT90-1106-TB	Units Mounted on Test Board

Note: Reference Application Note M513 for reel size information.

Truth Table

C32	C16	C8	C4	C2	C1	Attenuation
0	0	0	0	0	0	Loss, Reference
0	0	0	0	0	1	1.0 dB
0	0	0	0	1	0	2.0 dB
0	0	0	1	0	0	4.0 dB
0	0	1	0	0	0	8.0 dB
0	1	0	0	0	0	16.0 dB
1	0	0	0	0	0	32.0 dB
1	1	0	0	1	0	50.0 dB

0 = TTL Low; 1 = TTL High

- **North America** Tel: 800.366.2266 / Fax: 978.366.2266
- **Europe** Tel: 44.1908.574.200 / Fax: 44.1908.574.300
- **Asia/Pacific** Tel: 81.44.844.8296 / Fax: 81.44.844.8298

Visit www.macom.com for additional data sheets and product information.

**Digital Attenuator, 50 dB, 6-Bit, TTL Driver
DC - 2.4 GHz**

**AT90-1106
V11**

Electrical Specifications: $T_A = +25^\circ\text{C}$, $V_{CC} = +5\text{ V} \pm 0.25\text{ V}$

Parameter	Test Conditions	Frequency	Units	Min.	Typ.	Max.
Insertion Loss	—	DC - 2.4 GHz	dB	—	5.5	6.0
Attenuation Accuracy	Individual Bits 1-2-4-8-16-32 dB Any Combination of Bits 1 to 50 dB	DC - 2.4 GHz DC - 2.4 GHz	dB dB	— —	— —	$\pm(.3 + 5\%$ of atten setting) $\pm(.5 + 8\%$ of atten setting)
VSWR	Full Range	DC - 2.4 GHz	Ratio	—	1.8:1	2:1
Switching Speed	50% Cntl to 90%/10% RF 10% to 90% or 90% to 10%	— —	nS nS	— —	75 20	— —
1 dB Compression	— —	50 MHz 0.5 - 2.4 GHz	dBm dBm	— —	+21 +24	— —
Input IP3	Two-tone inputs up to +5 dBm	50 MHz 0.5 - 2.4 GHz	dB dB	— —	+35 +48	— —
$I_{CC}^{1,2}$	V_{CC} min to max, Logic "0" or "1" ^{3,4}	—	mA	—	8	—
Switching Noise	Generated from DC-DC Converter with recommended capacitors	3.5 MHz	mA	—	-93	—
Thermal Resistance θ_{JA}	—	—	$^\circ\text{C/W}$	—	15	—

1. During turn-on, the device requires an initial "Turn-on Current". Once operational, I_{CC} will drop to the specified levels.
2. The DC-DC converter is guaranteed to start in 100 μs as long as the power supplies can provide a minimum of 100 mA "Turnon Current".
3. Logic "0" = 0.0 to 0.8V, sink current is 20 μA maximum.
4. Logic "1" = 2.0 to 5.0V, source current is 20 μA maximum.

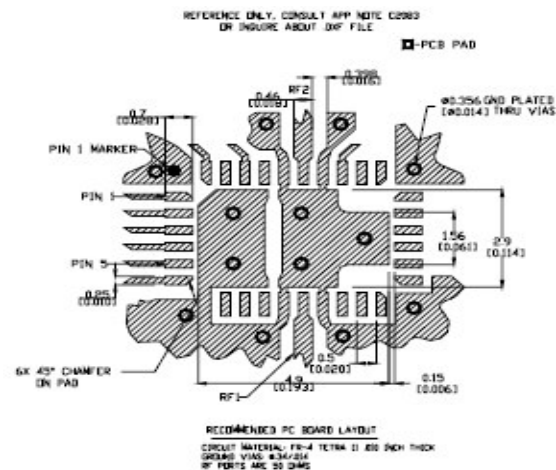
Absolute Maximum Ratings³

Parameter	Absolute Maximum
Max. Input Power 0.05 GHz 0.5 - 2.4 GHz	+27 dBm +34 dBm
Supply Voltages V_{CC}	+5.5V
Logic Voltage ⁴	-0.5V to $V_{CC} + 0.5V$
Operating Temperature	-40 $^\circ\text{C}$ to +85 $^\circ\text{C}$
Storage Temperature	-65 $^\circ\text{C}$ to +125 $^\circ\text{C}$

3. Exceeding any one or combination of these limits may cause permanent damage to this device.
4. Standard CMOS TTL interface, latch-up will occur if logic signal is applied prior to power supply.

M/A-COM Inc. and its affiliates reserve the right to make changes to the product(s) or information contained herein without notice. M/A-COM makes no warranty, representation or guarantee regarding the suitability of its products for any particular purpose, nor does M/A-COM assume any liability whatsoever arising out of the use or application of any product(s) or information.

Recommended PCB Configuration⁵



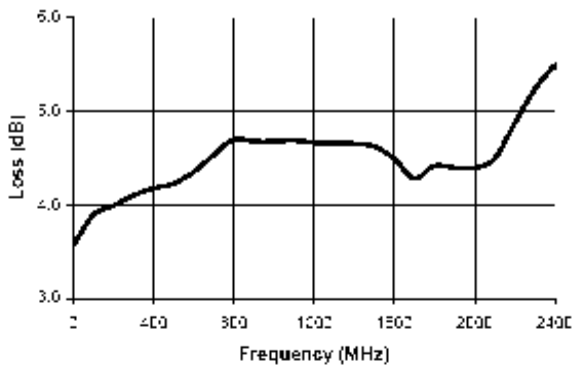
5. Application Note C2083 is available on line at www.macom.com

- **North America** Tel: 800.366.2266 / Fax: 978.366.2266
- **Europe** Tel: 44.1908.574.200 / Fax: 44.1908.574.300
- **Asia/Pacific** Tel: 81.44.844.8296 / Fax: 81.44.844.8298

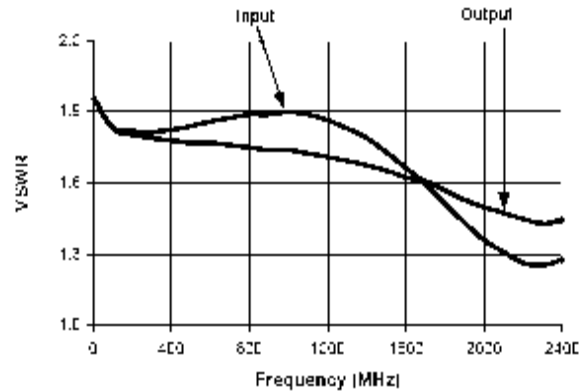
Visit www.macom.com for additional data sheets and product information.

Typical Performance Curves @ 25°C

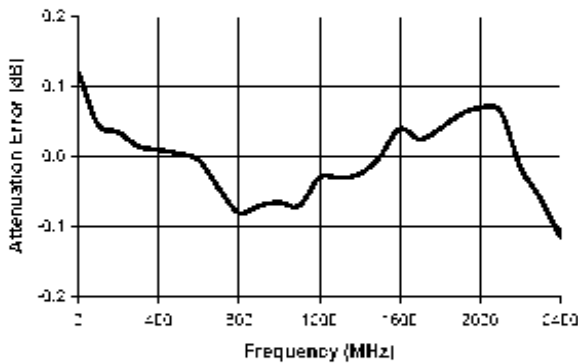
Insertion Loss



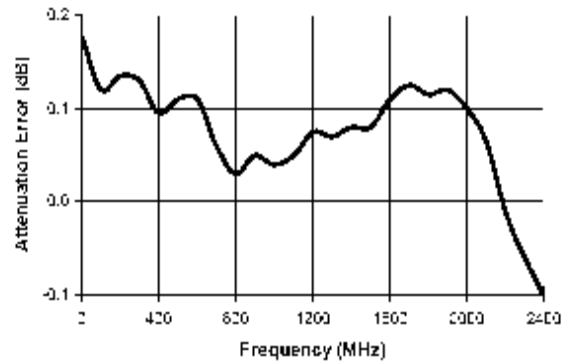
VSWR @ Insertion Loss



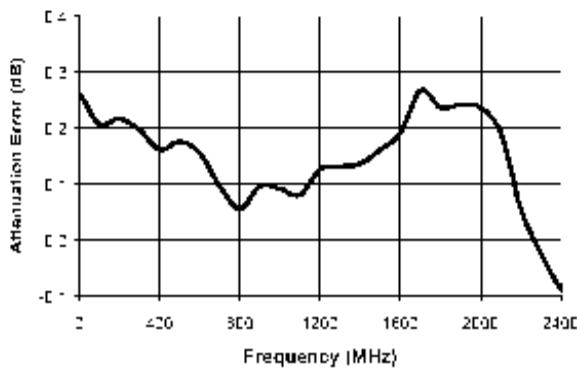
Attenuation Error. 1 dB Bit



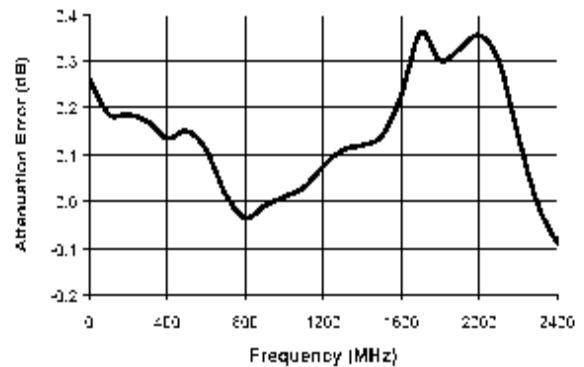
Attenuation Error. 2 dB Bit



Attenuation Error. 4 dB Bit



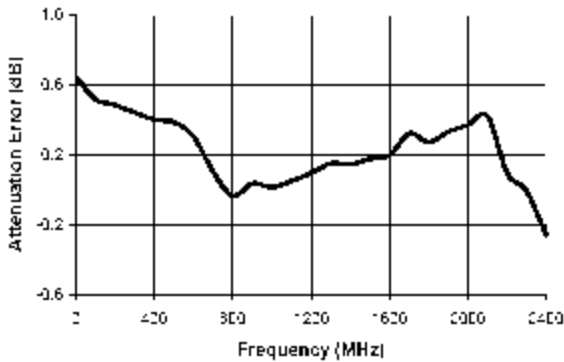
Attenuation Error. 8 dB Bit



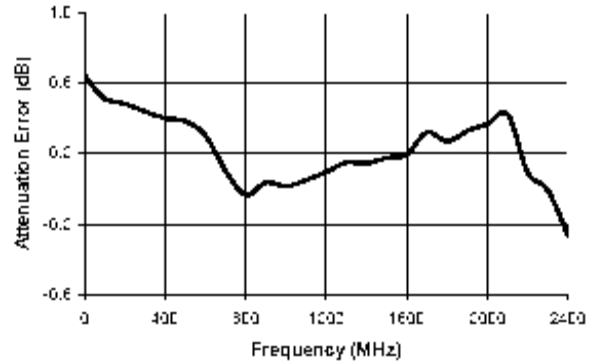
**Digital Attenuator, 50 dB, 6-Bit, TTL Driver
DC - 2.4 GHz**

**AT90-1106
V11**

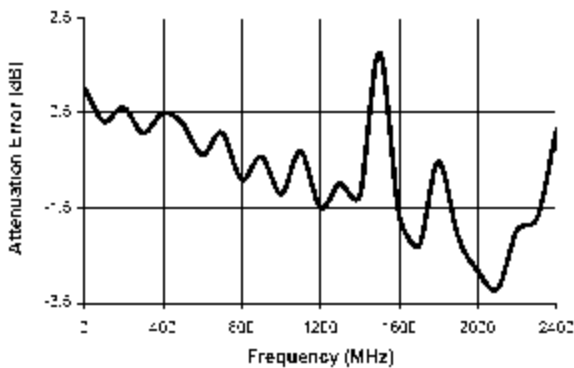
Attenuation Error, 16 dB Bit



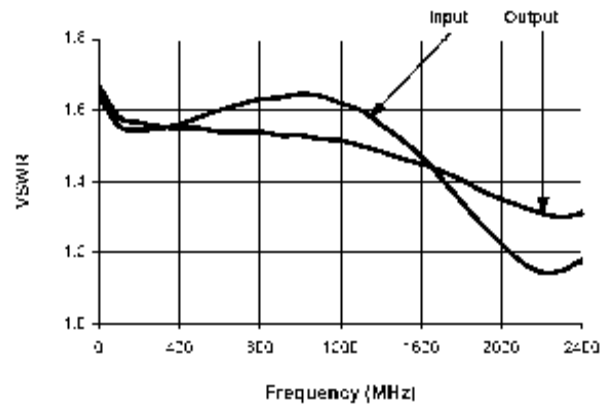
Attenuation Error, 32 dB Bit



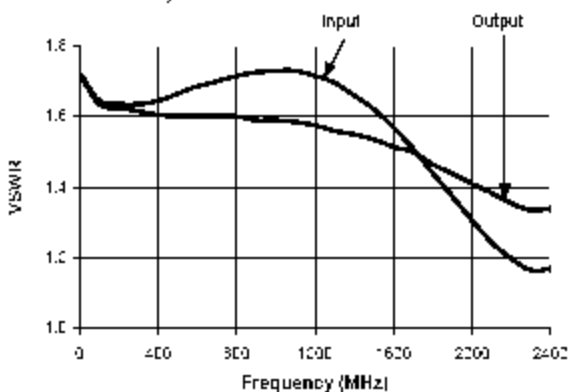
Attenuation Error, Max. Attenuation



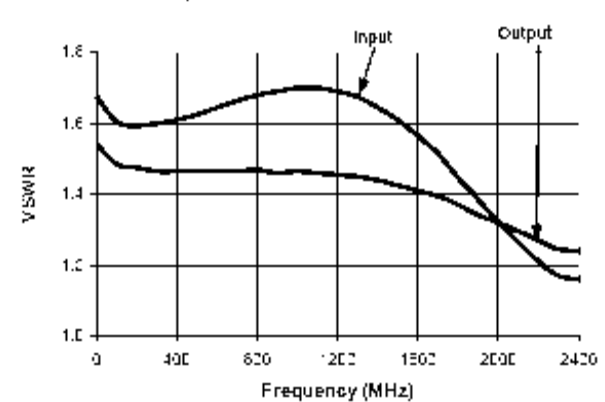
VSWR, 1 dB Bit



VSWR, 2 dB Bit



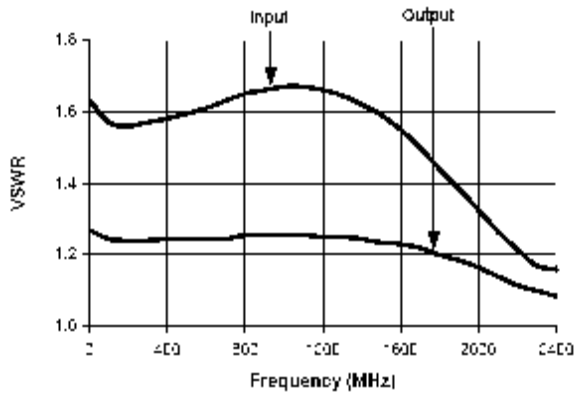
VSWR, 4 dB Bit



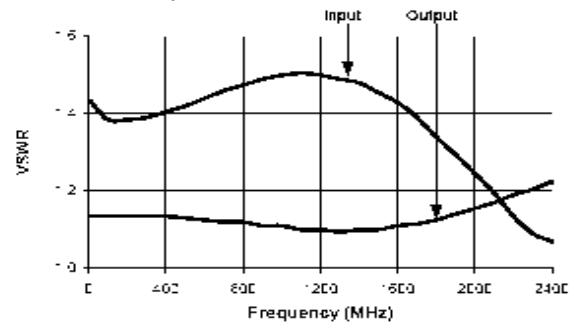
**Digital Attenuator, 50 dB, 6-Bit, TTL Driver
DC - 2.4 GHz**

**AT90-1106
V11**

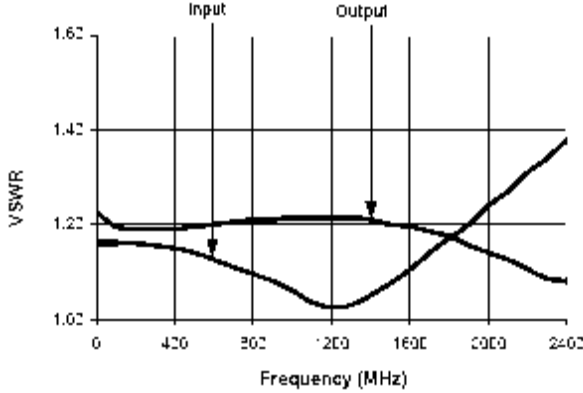
VSWR, 8 dB Bit



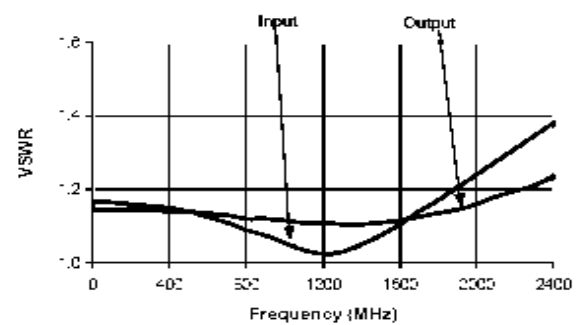
VSWR, 16 dB Bit



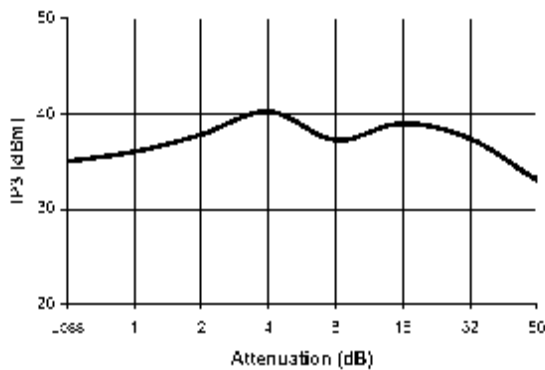
VSWR, 32 dB Bit



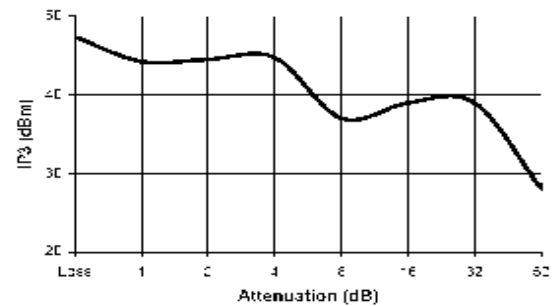
VSWR, Maximum Attenuation



**Maximum IP3 over Temperature
Range and Attenuation @ 50 MHz**



**Maximum IP3 over Temperature
Range and Attenuation @ 950 MHz**



**Maximum IP3 over Temperature
Range and Attenuation @ 1900 MHz**

