

PAW-1026 **5 - 200 MHz.**
24 dB. **CATV Ultra-linear Amplifier**



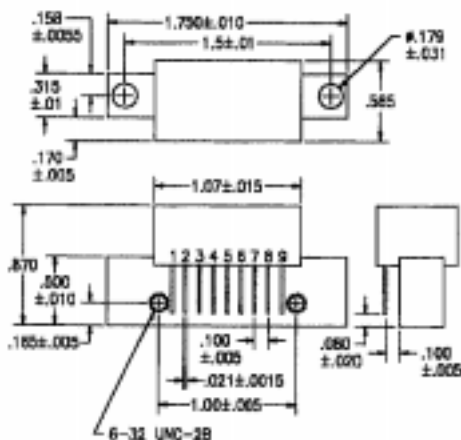
Features: (typical values)

- Ultra High Linearity
- Low Noise Figure
- Rugged Construction
- Operation over a wide voltage range

Electrical Specifications @30°C (75 ohms system)

Parameter	Typical Conditions	Min. Value	Max. Value	Units
Frequency Range		5	200	MHz.
Power Gain	f=10 MHz.	23.5	24.5	dB.
Gain Flatness (peak to valley)	f=5 to 200MHz.	-	+/-0.2	dB.
Gain Slope (dB)	f= 5 to 200 MHz.	-0.2	0.5	dB.
Composite Triple Beat (CTB)	60 channels flat Vo=46dBmV.	-	-59	dB.
Pout @ 1 dB Comp. Point	f= 5 to 200 MHz	26.0	-	dB.
Cross Modulation (XMOD)	60 channels flat Vo=46dBmV.	-	-59	dB.
Second Order IMD	2 tone Vout = +46 dBmV, F1=20, F2=180	-	-64	dB.
Noise Figure	@ f= 200 MHz.	-	5.5	dB.
VSWR In/Out		-20/-20	-	dB.
Total Current	@ Voltage of +24v.	-	230	mA.

Outline Drawings



Maximum Ratings

- Storage Temperature -40°C to +100°C
- DC Voltage +28 volts
- RF Input voltage +14 dBm.
- Operating Base Temperature +100°C

Pin Configuration

Pin #	Description
1	Input
2,3,7,8	Ground
5	+V
4,6	not used
9	Output