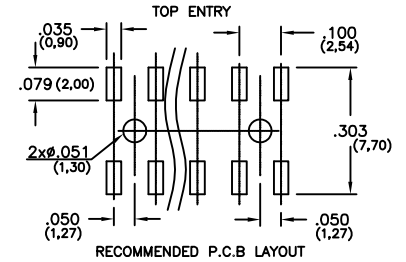
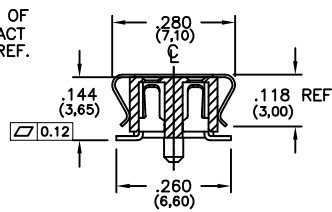
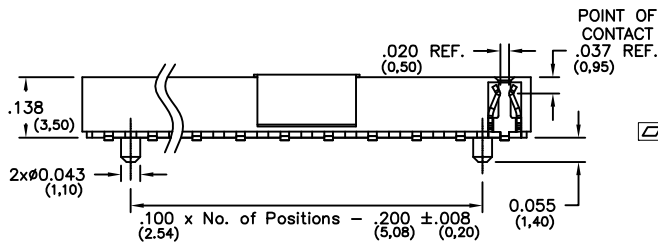
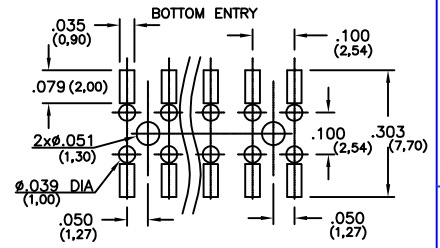
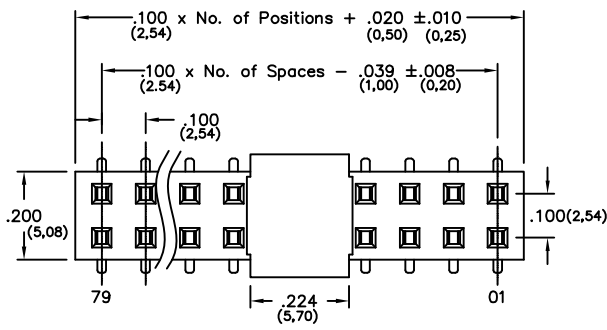


Major League Electronics .100cl Low Profile Surface Mount Box Contact - Vertical



Tails may be clipped to achieve desired pin length

Ordering Information

LSMBC-1 -D-02- -V- - - - - - -LF

Pins Per Row
03 - 40

Row Specification
D = Dual Row

Surface Mount

Lead Free

Alignment Pin
Leave blank if not needed
AP = With

Plating Options	
30µ Gold on Contact Area / Matte Tin on Tail	H
Matte Tin all Over	T
10µ Gold on Contact Area / Matte Tin on Tail	GT
10µ Gold on Contact Area / Flash on Tail	G
Gold Flash over Entire Pin	F

Packing Information

TR-P = Tape and Reel with Plastic Pick and Place pad
TB-P = Tube with Plastic Pick and Place pad
TB-0 = Tube without Pick and Place pad
If left blank, packaging at MLE's discretion
Pad may be metal, mylar or plastic

Polarized Position

Leave blank if not needed
If required, specify empty pin position, e.g. 012 for Pin 12

Vertical

Specifications

Insertion Depth: .070 (1,78) to .135 (3,43)
.102 (2,59) for bottom entry

Insertion Force - Per Contact - H Plating:

2oz. (0,56N) avg with .025 (0,64mm) sq. pin

Withdrawal Force - Per Contact - H Plating:

1.6oz. (0,44N) avg with .025 (0,64mm) sq. pin

Current Rating: 3.0 Ampere

Insulation Resistance: 1000MΩ Min.

Dielectric Withstanding: 600V AC

Contact Resistance: 20 mΩ Max.

Operating Temperature: -40°C to + 105°C

Max. Process Temperature:

Peak: 260°C up to 20 secs.

Process: 230°C up to 30 secs.

Reflow: 260°C up to 10 secs.

Materials

Contact Material: Phosphor Bronze

Insulator Material: Polyester, UL94V-0

LCP+30%G.F., Black

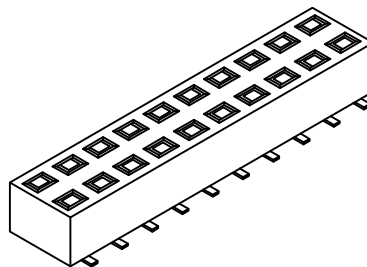
Plating: Au or Sn over 50µ" (1,27) Ni

Products cut to specific sizes are uncancellable/nonreturnable

Parts are subject to change without notice

Mates with:

BSTC, TSHCR,
BSTCM, TSHCRE,
BSTCR, TSHCRSM,
BSTCRSM, TSHR,
BSTS, TSHRE,
LBSTCM, TSHS,
LTSHCR, TSHSCM,
LTSHCRE, TSHSM,
LTSHR, ULTSHSM,
LTSHRE, ULTSHC,
LTSHSM, ULTSHCR
TSHC,



UNLESS OTHERWISE SPECIFIED
DIMENSIONS IN INCHES (MM)
TOLERANCES ARE:

NO PLACE DECIMALS ±0.30
ONE PLACE DECIMALS ±0.25
TWO PLACE DECIMALS ±0.15
THREE PLACE DECIMALS ±0.10

ANGLES
NO PLACE DECIMALS ±5.0°
ONE PLACE DECIMALS ±3.0°
TWO PLACE DECIMALS ±2.0°
THREE PLACE DECIMALS ±1.0°

LSMBC-1-DV SERIES

.100cl Low Profile - Vertical
Surface Mount Box Contact

29 JAN 07

Scale
NTS



4235 Earnings Way, New Albany, Indiana, 47150, USA
1-800-782-3486 (USA/Canada/Mexico)
Tel: 812-944-7244
Fax: 812-944-7268
E-mail: mle@mlelectronics.com
Web: www.mlelectronics.com

Revision
C

Sheet
1/2

Revisions

Revision B - (10th Oct 2008)

Release of new drawing featuring alignment pin,
Change to tolerances and specification

Revision C - (21st Apr 2009)

Current Rating changed from 1.0 Ampere
to 3.0 Ampere

UNLESS OTHERWISE SPECIFIED
DIMENSIONS IN INCHES (MM)
TOLERANCES ARE:

NO PLACE DECIMALS ± 0.30
ONE PLACE DECIMALS ± 0.25
TWO PLACE DECIMALS ± 0.15
THREE PLACE DECIMALS ± 0.10

ANGLES
NO PLACE DECIMALS $\pm 5.0^\circ$
ONE PLACE DECIMALS $\pm 3.0^\circ$
TWO PLACE DECIMALS $\pm 2.0^\circ$
THREE PLACE DECIMALS $\pm 1.0^\circ$

LSMBC-1-DV SERIES

.100cl Low Profile - Vertical
Surface Mount Box Contact

29 JAN 07

Scale
NTS



4235 Earnings Way, New Albany, Indiana, 47150, USA
1-800-782-3486 (USA/Canada/Mexico)

Tel: 812-944-7244
Fax: 812-944-7268
E-mail: mle@mlelectronics.com
Web: www.mlelectronics.com

Revision
C

Sheet
2/2