



**Data Sheet**



Product Category: IF SAW Filter

Part Number  
820-IF70.0M-F

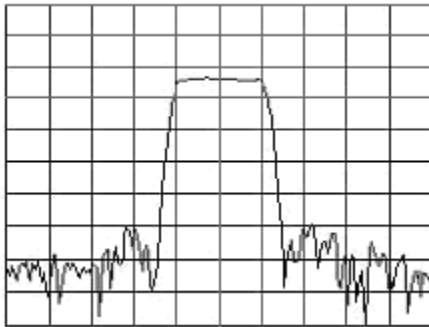
Package  
20.2 x 12.6 Thru Hole

Application  
Base Station & Repeater

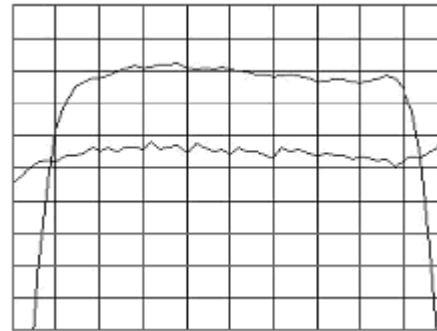
Last Modified  
May 02 2003

TYPE :  
70.0 MHz Bandpass Filter  
4.0 MHz Bandwidth

PART NUMBER :  
**820-IF70.0M-F**



Horizontal : 2.0 MHz/Div  
Vertical : 10 dB/Div



Horizontal : 0.5 MHz/Div  
Vertical : 1 dB/Div  
Vertical : 100 ns/Div

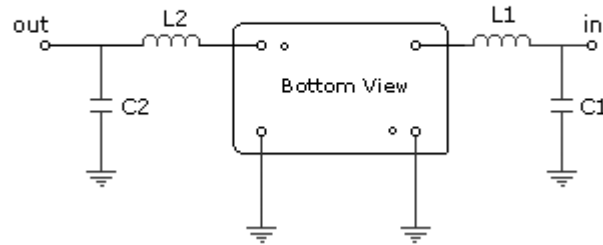
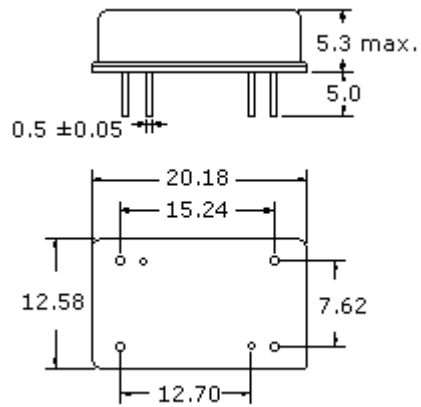
**OPERATING CONDITIONS / ELECTRICAL CHARACTERISTICS**

PARAMETERS	Minimum	Typical	Maximum	Units
Center Frequency	69.92	70.00	70.08	MHz
Insertion Loss	-	22.5	25.0	dB
1dB Bandwidth	3.8	4.0	-	MHz
3dB Bandwidth	4.1	4.3	-	MHz
40dB Bandwidth	-	5.6	5.9	MHz
Passband Ripple	-	0.5	0.8	dB
Group Delay Variation	-	80	100	nsec
Absolute Delay	-	2.06	-	µsec
Ultimate Rejection	45	55	-	dB
Substrate Material	-	112 LT	-	-
Ambient Temperature	-	25	-	°C

\* Custom SAW IF Filters available. Contact Oscilent for assistance.

**PACKAGE OUTLINE** (mm)

**TEST FIXTURE**



L1 = 86nH      C1 = 75pF  
 L2 = 82nH      C2 = 75pF  
 Source/Load Impedance = 50 ohms

**Oscilent Corporation** - CALL **949.252.0522**

17962 Sky Park Circle, Building D, Irvine, CA 92614, USA  
 Fax: 949.252.0599, E-Mail: Sales@Oscilent.com

**Part No.:** 820-IF70.0M-F