

# MVS-4100, 4200

## Machine Vision Strobe



### Description

The PerkinElmer Optoelectronics MVS 4100 and MVS 4200 are cost-effective strobes for a wide variety of industrial inspection applications. The linear xenon flashlamp, mounted in a reflector for maximum intensity, provides 6 microsecond pulses at flash rates up to 100 Hz. The energy-per-flash remains constant at 180 mJ; no range-switching is needed.

These 20 Watt strobes are housed in a convection-cooled, rugged enclosure. Threaded hoses at the bottom of the enclosure allow the unit to be hard mounted.

The MVS 4100 has an optically isolated trigger input and requires an external +5V TTL pulse to flash. The MVS 4200 has an internal oscillator and can be run in either external or internal trigger mode. The MVS 4200 is ideal as a stand-alone unit for “stroboscopic” applications.

### Features

- Low cost
- Compact/light weight
- Universal AC input (90–230 VAC, 560/60 Hz)
- Long life xenon flashlamp
- Flash rates to 100 Hz
- Pulse duration 6  $\mu$ sec
- Internal/external trigger
- Convection cooled



# MVS-4100, 4200

## Optical Specifications

Spectral bandwidth (1)	300 to 1100+ nm
Flash rate	Up to 100 Hz (6,000 fpm)
Flashlamp life (3)	>10 <sup>8</sup> flashes
Flash duration (2)	6 microseconds
Flash to flash variation	< 5%

### Illumination Characteristics

Distance	Area Illuminated	Photometric	Radiometric
6 inches	6 in. x 8 in.	19 lux-sec	15 x 10 <sup>-6</sup> J/cm <sup>2</sup>
1 foot	12 in. x 16 in.	5.7 lux-sec	4.5 x 10 <sup>-6</sup> J/cm <sup>2</sup>
2 feet	20 in. x 23 in.	1.5 lux-sec	1.2 x 10 <sup>-6</sup> J/cm <sup>2</sup>
3 feet	36 in. x 48 in.	0.6 lux-sec	0.5 x 10 <sup>-6</sup> J/cm <sup>2</sup>

Note 1: Spectral bandwidth may be extended into the ultraviolet with other flashlamp envelope and enclosure window materials. Contact factory for IR or UV filters.

Note 2: Measured at 1/3 peak value.

Note 3: Prior to light output decreasing to 50% of the initial value.

Note 4: Area where energy is not less than 50% of maximum.

Note 5: Lux-sec = Lumen-sec/m<sup>2</sup>.

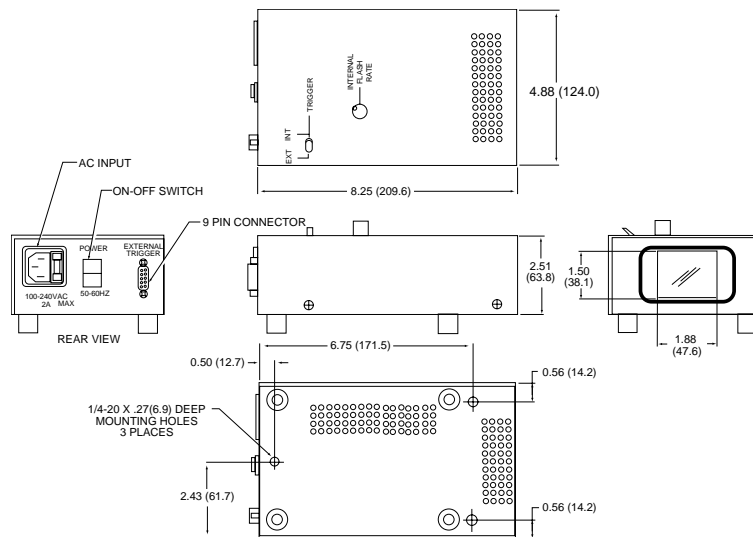
Note 6: Delay between flash command and light output is 8 µsec typical.

## Electrical Specifications

Input voltage	90 - 230 ±10% VAC, 50/60 Hz
Input current	2.0 amps maximum
Flashlamp voltage	600 volts
Discharge capacitor	1.0 microfarad ± 10%
Discharge energy	0.18 Joules (± 10%)
Discharge power	20 watts maximum
Trigger input: (1)	
Trigger	+5 volt pulse into opto-isolator with 150 ohm nominal series resistor
Pulse duration	10 to 100 microseconds

Internal oscillator 10 - 100 Hz (10 turn potentiometer) (MVS-4200 only)

## Physical Specifications



For more information e-mail us at [opto@perkinelmer.com](mailto:opto@perkinelmer.com) or visit our web site at [www.perkinelmer.com/opto](http://www.perkinelmer.com/opto).

All values are nominal; specifications subject to change without notice.

USA:  
PerkinElmer Optoelectronics  
35 Congress Street  
Salem, MA 01970  
Toll Free: (800) 950-3441 (USA)  
Phone: (978) 745-3200  
Fax: (978) 745-0894

Europe:  
PerkinElmer Optoelectronics  
Wenzel-Jaksch-Str. 31, D-65199  
Weisbaden, Germany  
Phone: +49 (0) 611-492-437  
Fax: +49 (0)611-492-159

Asia:  
PerkinElmer Optoelectronics  
47 Ayer Rajah Crescent #06-12  
Singapore 139947  
Phone: +65 775 2022  
Fax: +65 775 1008

