

PLEASE CHECK WWW.MOLEX.COM FOR LATEST PART INFORMATION

Part Number: [0351280200](#)
Status: **Active**
Description: 6.00mm (.236") Pitch Wire-to-Wire Female Housing, 2 Circuits, Vertical

Documents:

[Drawing \(PDF\)](#) [RoHS Certificate of Compliance \(PDF\)](#)
[Product Specification PS-35127-001 \(PDF\)](#)

Agency Certification

CSA	LR19980
TUV	R72081037
UL	E29179

General

Product Family	Crimp Housings
Series	35128
Product Name	N/A

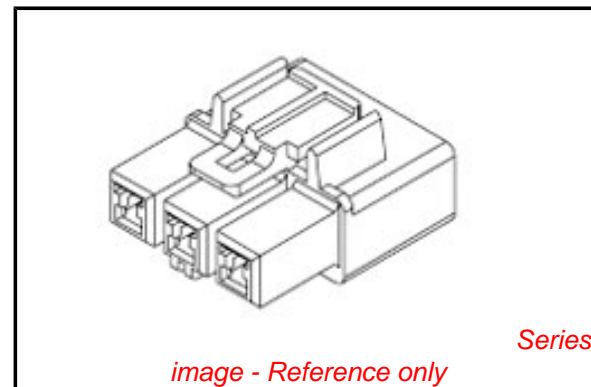
Physical

Circuits (maximum)	2
Color - Resin	Natural
Flammability	94V-0
Gender	Female
Glow-Wire Compliant	No
Material - Resin	Polyester
Number of Rows	1
Packaging Type	Bag
Panel Mount	No
Pitch - Mating Interface (in)	0.236 In
Pitch - Mating Interface (mm)	6.00 mm
Stackable	No
Temperature Range - Operating	-40°C to +120°C

Material Info

Reference - Drawing Numbers

Product Specification	PS-35127-001
Sales Drawing	SD-35128-001



EU RoHS

ELV and RoHS Compliant
REACH SVHC
 Not Reviewed
Halogen-Free Status
 Not Reviewed

China RoHS



Need more information on product environmental compliance?

Email productcompliance@molex.com
 For a multiple part number RoHS Certificate of Compliance, [click here](#)

Please visit the [Contact Us](#) section for any non-product compliance questions.

Search Parts in this Series

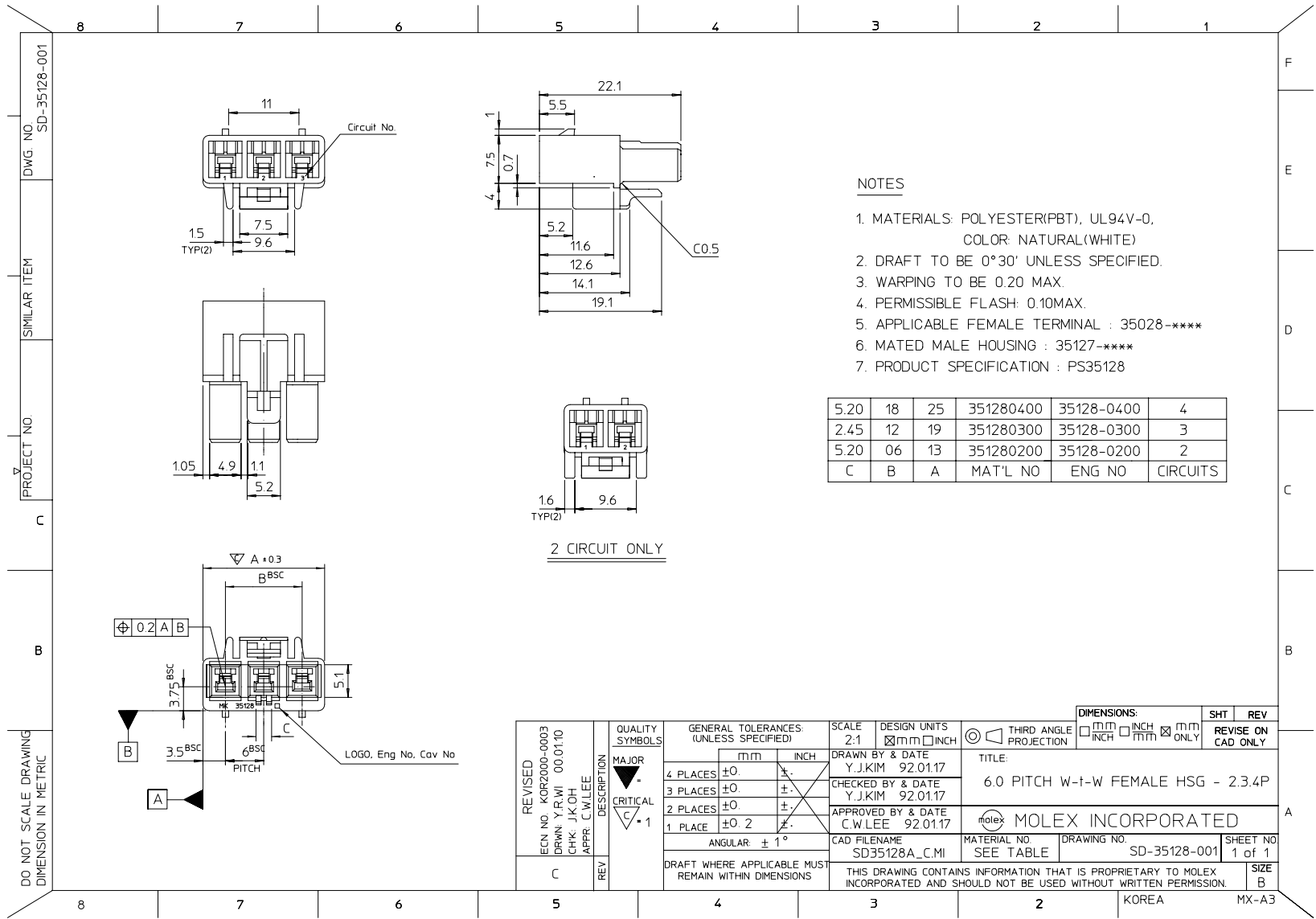
[35128Series](#)

Mates With

[35127](#)

Use With

[35028](#)



NOTES

1. MATERIALS: POLYESTER(PBT), UL94V-0, COLOR: NATURAL(WHITE)
2. DRAFT TO BE 0°30' UNLESS SPECIFIED.
3. WARPING TO BE 0.20 MAX.
4. PERMISSIBLE FLASH: 0.10MAX.
5. APPLICABLE FEMALE TERMINAL : 35028-****
6. MATED MALE HOUSING : 35127-****
7. PRODUCT SPECIFICATION : PS35128

5.20	18	25	351280400	35128-0400	4
2.45	12	19	351280300	35128-0300	3
5.20	06	13	351280200	35128-0200	2
C	B	A	MAT'L NO	ENG NO	CIRCUITS

REVISED ECN NO. KOR2000-0003 DRWN. Y.R.WI 00.01.10 CHK. J.K.OH APPR. C.W.LEE	QUALITY SYMBOLS MAJOR CRITICAL 1	GENERAL TOLERANCES (UNLESS SPECIFIED)		SCALE 2:1	DESIGN UNITS <input checked="" type="checkbox"/> mm <input type="checkbox"/> INCH	THIRD ANGLE PROJECTION <input type="checkbox"/> mm <input checked="" type="checkbox"/> INCH	DIMENSIONS: <input type="checkbox"/> mm <input checked="" type="checkbox"/> INCH	SHT	REV	
		4 PLACES ±0	±	DRAWN BY & DATE Y.J.KIM 92.01.17	TITLE: 6.0 PITCH W-T-W FEMALE HSG - 2.34P					
		3 PLACES ±0	±	CHECKED BY & DATE Y.J.KIM 92.01.17	MOLEX INCORPORATED					
		2 PLACES ±0	±	APPROVED BY & DATE C.W.LEE 92.01.17	CAD FILENAME SD35128A_C.MI	MATERIAL NO SEE TABLE	DRAWING NO. SD-35128-001	SHEET NO. 1 of 1	SIZE B	
C	DESCRIPTION	ANGULAR: ± 1°		THIS DRAWING CONTAINS INFORMATION THAT IS PROPRIETARY TO MOLEX INCORPORATED AND SHOULD NOT BE USED WITHOUT WRITTEN PERMISSION.						
DRAFT WHERE APPLICABLE MUST REMAIN WITHIN DIMENSIONS		KOREA MX-A3								

DO NOT SCALE DRAWING
 DIMENSION IN METRIC
 PROJECT NO. SD-35128-001
 SIMILAR ITEM
 DWG. NO. SD-35128-001