

Category 8.2 Series

Cable Jacks and Patch Cords

Stewart Connector's Category 8.2 series introduces cable jacks and patch cords that can run speeds of 25GBASE-T and 40GBASE-T over copper twisted pair. The Cat 8.2 series consists of cable mounted, field terminated cable jacks and patch cords. They are designed to meet Category 8.2 performance standards up to 2 GHz as defined by ISO/IEC 11801-1 Class II.

The Category 8.2 series adds to Stewart Connector's ARJ45® connector family. Stewart's ARJ45® connectors are built on the proven reliability of the standard RJ45 interface mechanics which have been enhanced to support increased data speeds. The Cat 8.2 series is a cost-effective solution for data centers looking to upgrade their data transmission speeds without switching over to a fiber optic solution.

Features & Benefits

- Capable of running speeds of 25GBASE-T and 40GBASE-T over copper twisted pair
- Designed to meet Category 8.2 performance standards up to 2 GHz as defined by ISO/IEC 11801-1 Class II
- ARJ45 interface offers superior pair to pair isolation compared to the RJ45
- Our ARJ45 cable jack offers tool-less termination and is designed to interface with industry standard panels and outlets
- Supports 100W POE applications

Applications

- Medical
- Ethernet networking
- Military communications
- Industrial equipment interface
- High speed/high noise networking protocols

Category 8.2 Series Cable Jacks and Patch Cords

Part Numbers

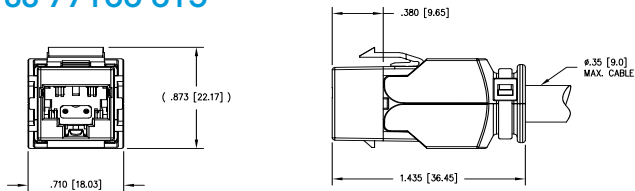
Cable Jacks

Part Number	Performance	Interface	Product Type
SS-77100-015	Cat 8.2	ARJ45	Field Terminatable Cable Jack

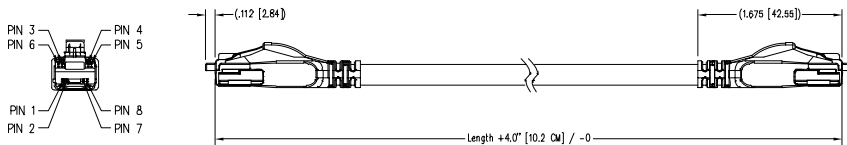
Patch Cords

Part Number	Conn End A	Conn End B	Length ft	mm	Cable Jacket Type	Performance
CA82-010M-01	Cat 8.2 ARJ45	Cat 8.2 ARJ45	3.28ft	1m	FRNC/LSZH	Cat 8.2
CA82-020M-01	Cat 8.2 ARJ45	Cat 8.2 ARJ45	6.56ft	2m	FRNC/LSZH	Cat 8.2
CA88-020M-01	Cat 8.1 RJ45	Cat 8.2 ARJ45	6.56ft	2m	FRNC/LSZH	Cat 8.1

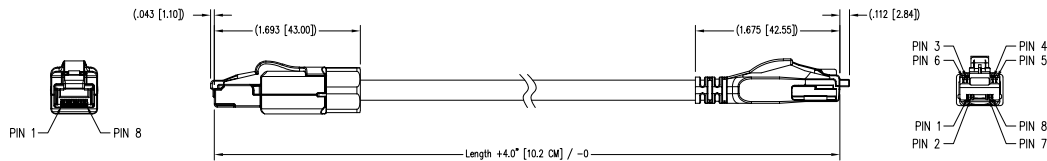
SS-77100-015



CA82-010M-01



CA88-020M-01



Stewart Connector
11118 Susquehanna Trail South
Glen Rock, PA 17327-9199

+1 717.235.7512
techhelp@belf.com
belfuse.com/stewart-connector