

Coaxial Amplifier

ZHL-5W-2G

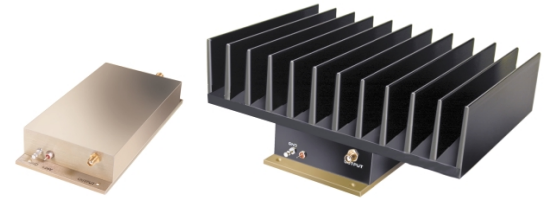
50Ω High Power 5W 800 to 2000 MHz

Features

- high power, 5 Watt
- low current consumption, 1.7A typ.
- useable over 700 to 2200 MHz
- regulated internal power supply (current remains constant over 22 to 28V)
- no damage with an open or short output load under full CW output power

Applications

- cellular, PCN, GSM, ISM
- lab test



ZHL-5W-2GX(+)

ZHL-5W-2G-S

CASE STYLE: DDD131

Connectors	Model	Price	Qty.
SMA	ZHL-5W-2G-S	\$995.00	(1-9)
SMA	ZHL-5W-2GX(+)	\$945.00	(1-9)

+ RoHS compliant in accordance with EU Directive (2002/95/EC)

The +Suffix identifies RoHS Compliance. See our web site for RoHS Compliance methodologies and qualifications.

Electrical Specifications

MODEL NO.	FREQ. (MHz)		GAIN (dB)				MAXIMUM POWER OUTPUT (dBm)					DYNAMIC RANGE		VSWR (:1) Typ.		DC POWER**	
							(1 dB Compr.)		(3 dB Compr.)		Input (no damage)	NF (dB) Typ.	IP3 (dBm) Typ.	In	Out	Volt (V) Nom.	Current (A) Max.
							Min.	Typ.	Min.	Typ.							
ZHL-5W-2G	f_L	f_U	Min.	Typ.	Max.	Flatness Max.	Min.	Typ.	Min.	Typ.	Input (no damage)	Typ.	Typ.	In	Out	24	2.0
ZHL-5W-2GX(+)*	800	2000	40	45	50	±2.1	+36	+37	+37	+38	+1	8.0	+44	1.7	1.5	24	2.0

*Heat sink not included

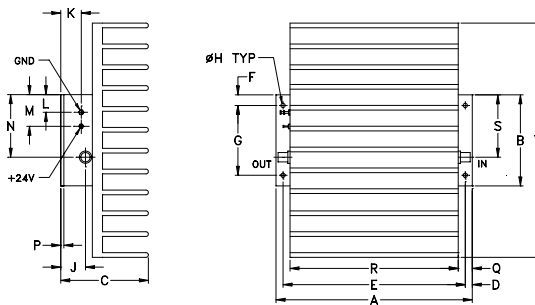
** Power Supply should be capable of delivering 3A at start up.

To order without heat sink, add suffix X to model number. Alternative heat sinking and heat removal must be provided by the user to limit maximum base-plate temperature to 87°C, in order to ensure proper performance. For reference, this requires thermal resistance of user's external heat sink to be 0.46°C/W Max.

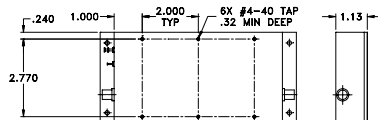
Maximum Ratings

Operating Temperature	-20°C to 65°C
Storage Temperature	-55°C to 100°C
DC Voltage	+28V Max.

Outline Drawing



MOUNTING INFORMATION FOR MODELS WITHOUT HEATSINK



Outline Dimensions (inch/mm)

A	B	C	D	E	F	G	H	J	K	L	M	N	P	Q	R	S	T	wt
7.00	3.25	3.13	.25	6.500	.38	2.500	.156	.88	.43	.62	1.00	2.63	.125	.50	6.00	2.23	8.35	grams*
177.80	82.55	79.50	6.35	165.10	9.65	63.50	3.96	22.35	10.92	15.75	25.40	66.80	3.18	12.70	152.40	56.64	212.09	1780

*510 grams without heatsink

Mini-Circuits®
ISO 9001 ISO 14001 CERTIFIED

ALL NEW
minicircuits.com

P.O. Box 350166, Brooklyn, New York 11235-0003 (718) 934-4500 Fax (718) 332-4661 For detailed performance specs & shopping online see Mini-Circuits web site



The Design Engineers Search Engine Provides ACTUAL Data Instantly From MINI-CIRCUITS At: www.minicircuits.com

RF/IF MICROWAVE COMPONENTS

REV. C
M117501
ZHL-5W-2G
080429
Page 1 of 2

FREQUENCY (MHz)	GAIN (dB)			VSWR (:1)		POUT at 1 dB COMPR. (dBm)	FREQUENCY (MHz)	IP3 (dBm)	NOISE FIGURE (dB)
	22V	24V	28V	IN	OUT	24V		24V	24V
800.00	44.61	44.83	44.36	1.31	1.18	36.16	800.00	44.07	9.00
900.00	45.71	45.92	45.45	1.33	1.29	36.81	1000.00	44.17	9.00
1000.00	46.27	46.48	46.03	1.37	1.27	37.09	1250.00	44.16	9.15
1100.00	46.33	46.54	46.08	1.39	1.11	37.14	1500.00	44.76	9.18
1200.00	45.79	45.98	45.47	1.42	1.19	36.72	1750.00	45.25	8.91
1300.00	44.86	45.04	44.55	1.44	1.24	36.30	2000.00	44.64	8.59
1350.00	44.53	44.71	44.25	1.43	1.19	36.06			
1400.00	44.34	44.54	44.09	1.43	1.09	35.79			
1450.00	44.22	44.43	43.96	1.46	1.07	35.73			
1500.00	44.08	44.29	43.77	1.47	1.20	35.72			
1550.00	43.87	44.08	43.51	1.44	1.35	35.85			
1600.00	43.70	43.91	43.29	1.44	1.41	35.95			
1650.00	43.60	43.80	43.15	1.41	1.43	36.19			
1700.00	43.65	43.85	43.21	1.39	1.35	36.63			
1750.00	43.67	43.88	43.23	1.35	1.24	37.02			
1800.00	44.04	44.26	43.58	1.30	1.18	37.59			
1850.00	44.29	44.51	43.80	1.24	1.24	37.99			
1900.00	44.48	44.70	43.97	1.16	1.28	38.31			
1950.00	44.59	44.81	44.10	1.09	1.27	38.22			
2000.00	44.72	44.97	44.32	1.04	1.21	37.49			

