



# T200 IDENT PRINTER

## BUDGET THERMAL TRANSFER PRINTER

### TECHNICAL DATASHEET

TTDS-256 issue 6, May 2015

**The T200 Ident printer is a budget thermal transfer printer.**

Designed to print on a wide range of TE Connectivity (TE) identification marker sleeves, cable markers, and labels. This light weight, low cost printer replaces the T212M-PRINTER.

**Features**

- High accuracy printing
- Easy to use
- Light weight
- Small footprint
- Easy to fit accessories
- Touch screen
- Software version available

**Applications**

- Office environment
- Light Industrial environment

**Approvals / Declarations**

- CE
- FCC Class A
- CB
- CCC
- UL
- GOST
- KC

**Environmental**

- Further information and a downloadable declaration covering RoHS and REACH compliance can be found at the 'TE Product Compliance Support Centre':

<http://www.te.com/en/resources/product-compliance.html>

**Specifications**

The printer's 300dpi resolution combined with recommended media and Thermal Transfer ribbons, meet all relevant TE RW performance specifications.

Print quality and print performance can only be guaranteed when specific TE printer and ribbons are used.

The current list of printers and ribbons can be found in TE document 411-121005 'Identification Printer Product Ribbon Matrix'. This document can be found at the TE document centre: <http://www.te.com/commerce/DocumentDelivery/DDEController>

**TECHNICAL DATA SHEET**

TTDS-256

**PRINTER ORDERING INFORMATION**

DESCRIPTION	PART NUMBER
T200-IDENT-PRINTER	EC6996-000
T200-IDENT-SWARE-PRINTER	EC6997-000

**PRINTER PROPERTIES****PERFORMANCE**

PRINT SPEED	30, 40, 50, 75, 100, 125mm/s. (1, 1.5, 2, 3, 4, 5 in/s)
PRINT WIDTH MAX:	105.7mm (4.2in)
PRINT DEFINITION:	300 dpi Thermal Transfer
LABEL WIDTH	5 to 120mm (0.16 to 4.2 in), 116mm (4.6 in) backing paper width
LABEL HEIGHT	5mm (0.2 in) minimum to 1,000mm (39.4 in) maximum
MEDIA ROLL CAPACITY	152mm (6.0 in) Outside Diameter, inside core diameter 38 – 76mm (1.5 – 3 in)
INK RIBBONS	25.4mm (1 inch) core, ink inside or outside, variable length up to 360M (1181 ft)
CUT MODE	Cutter & Perforator available as accessories.
SENSOR	Variable position Gap & Reflective (automatic calibration)
ELECTRICAL REQUIREMENTS	100 to 240V - 50/60Hz, PFC
OPERATING TEMPERATURE	+5°C to +40°C (+41°F to +104°F).
OPERATING HUMIDITY	10% to 85% non-condensing RH
POWER CONSUMPTION	Power save mode 1.8W Typical 45W / Max 100W
PHYSICAL CHARACTERISTICS	Depth: 322mm (12.7 inches) Height: 189mm (7.4 inches) Width: 253mm (10.0 inches) Weight: 4kg (8.8 lb)
PERFORATOR/CUTTER	<b>Perforator:</b> maximum product width 5 - 45mm (0.2 - 1.8 in). <b>Cutter:</b> maximum product width 5 - 85mm (0.2 - 3.3 in). <b>Perforator/Cutter:</b> 200 cuts/perforations per minute. Cut/Perforate length 5 - 1000mm
INTERFACES	USB 2.0 High speed slave for PC connection at the rear of the printer USB master 1 at rear of the printer (Up to 500mA), 2 at front of printer (Up to 100mA) RS232 C 1.200 up to 230.400 Baud rate / 8 Bit Ethernet 10 / 100 Base T, LPD, Raw IP-Printing, ftp-Printing, DHCP, HTTP, FTP, SMTP, SNMP, TIME, Zeroconf, mDNS, SOAP
ELECTRONICS	RAM 64MB, Processor speed 400MHz, Memory IFFS flash 16MB

**PRINTER SPARE PARTS ORDERING INFORMATION (consumables)**

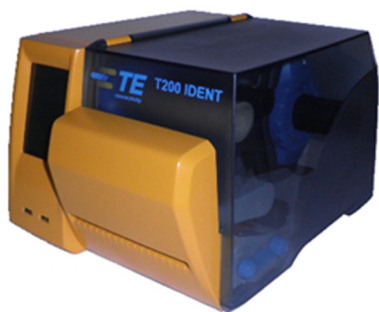
<b>300 dpi Printhead</b>	
Description	T200-IDENT-PRINTHEAD
Part number	EC8927-000
<b>Drive roller</b>	
Part number	T200-IDENT-DR4-DRIVEROLLER
Description	EC8926-000

PAGE 3

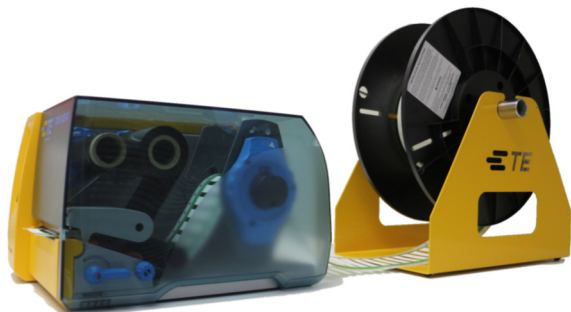
**PRINTER ACCESSORY ORDERING INFORMATION**

<b>Cutter</b>	
Description:	T200-IDENT-CUTTER
Part number:	EC8456-000
<b>Perforator:</b>	
Description:	T200-IDENT-PERFORATOR
Part number:	EC8869-000
<b>Universal reel holder</b>	
Description:	PRINTER-UNIVERSAL-REEL-HOLDER
Part number:	EC9926-000

For more details regarding printer accessories please consult TTDS-260, and for more details concerning the Universal reel holder please consult TTDS-259.



T200 Ident printer fitted with Cutter/Perforator.

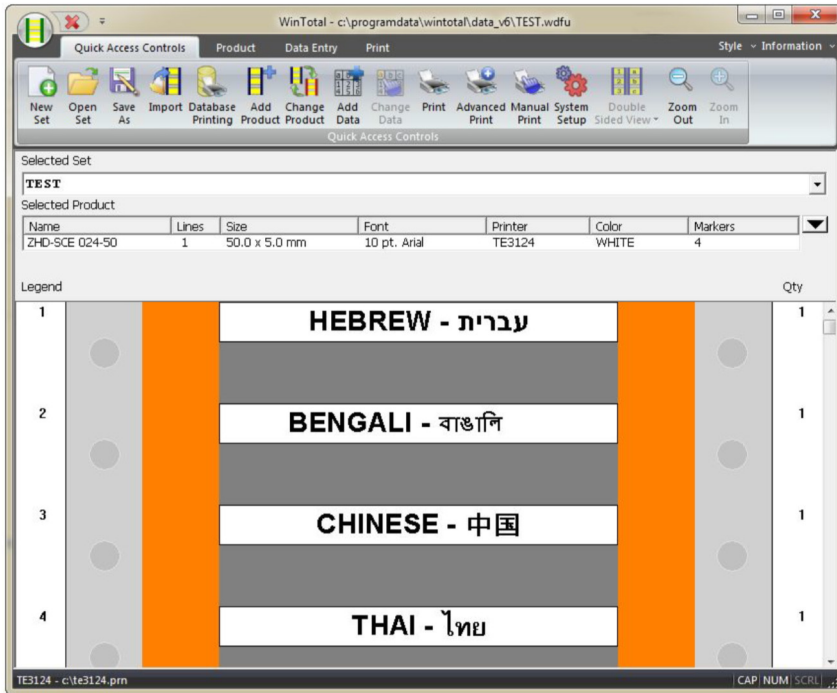


T200 Ident printer with the Universal reel holder

**SOFTWARE ORDERING INFORMATION**

<b>WINTOTAL 6 (Dongle)</b>	
Description	WINTOTAL-6-DONGLE
Part number	EC9816-000
<b>WINTOTAL 5 (Dongle)</b>	
Description	WINTOTAL-5-DONGLE
Part number	ED4097-000
<b>Printeasy 5 Express</b>	
Description	PEP-5-Express
Part number	CC6161-000
<b>Printeasy 5 Pro</b>	
Description	PEP-5-Pro
Part number	CC6174-000
<b>Printeasy 5 Suite</b>	
Description	PEP-5-Suite
Part number	CC6178-000

**SOFTWARE**



Cable Markers are fully supported by WINTOTAL and PrintEasy label printing software, available from the TE product store:

<http://www.te.com/en/general/label-printing-software.html>

Contact a TE representative for further information

**te.com**

TE Connectivity, TE Connectivity (logo) and Every Connection Counts are trademarks. All other logos, products and/or company names referred to herein might be trademarks of their respective owners.

The information given herein, including drawings, illustrations and schematics which are intended for illustration purposes only, is believed to be reliable. However, TE Connectivity makes no warranties as to its accuracy or completeness and disclaims any liability in connection with its use. TE Connectivity's obligations shall only be as set forth in TE Connectivity's Standard Terms and Conditions of Sale for this product and in no case will TE Connectivity be liable for any incidental, indirect or consequential damages arising out of the sale, resale, use or misuse of the product. Users of TE Connectivity products should make their own evaluation to determine the suitability of each such product for the specific application.

© 2015 TE Connectivity Ltd. family of companies All Rights Reserved.