

2878- \* \* \* \* \*

MATERIAL CODE (.271/.0106 THK)

A=BRASS  
B=PHOS BRONZE

WINDING SPEC.  
A=PER WINDING DETAIL A  
B=PER WINDING DETAIL B  
L=LOOSE

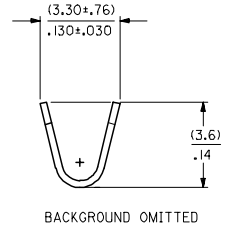
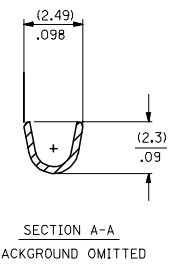
OPTION CODE

A= OVERALL PLTGS, AND STD GOLD LOC  
B= LARGER SELECT GOLD LOCATION

PLATING CODE

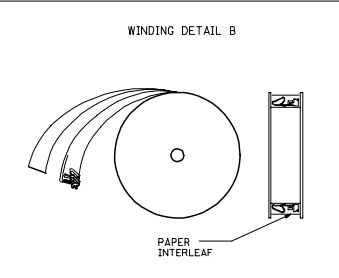
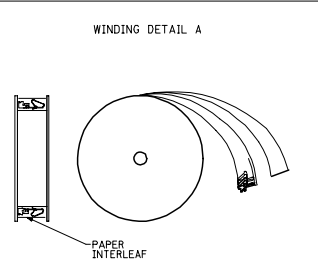
\*(P909) OVERALL HOT TIN DIP: 2.54 MICROMETERS MIN  
(550) SELECT GOLD: 0.38 MICROMETERS MIN.  
OVERALL GOLD FLASH: 0.05 MICROMETERS MIN.  
OVERALL NICKEL UNDERPLATE: 0.76 MICROMETERS MIN.  
(555) SELECT GOLD: 0.38 MICROMETERS MIN.  
OVERALL NICKEL UNDERPLATE: 0.76 MICROMETERS MIN.

\*THE PRIMARY SHIPPING CARTON WILL BE LABELED \*COMPLIANT TO ROHS DIRECTIVE 2002/95/EC AND ELV ANNEX II OF DIRECTIVE 2000/53/EC.\* CARTONS WITHOUT THIS LABEL MAY CONTAIN PRODUCT WITH TIN-LEAD PLATING.



NOTES:

1. CRIMP ACCEPTS 18 TO 20 GA. WIRE WITH (2.79)/.110 MAX. INSUL. DIA. WHEN USED WITH 2574 CONNECTOR.  
(2.54)/.100 MAX. INSUL. DIA. WHEN USED WITH 2139 CONNECTOR  
CRIMP ACCEPTS (3.00)/.118 MAX. INSUL. DIA. WITH SPECIAL TOOLING.
2. DIMENSIONS GIVEN ACROSS CENTERLINES ARE SYMMETRICAL ABOUT THOSE CENTERLINES WITHIN HALF THE TOTAL TOLERANCE.
3. (.86±.05)/.034±.002 IS AN OPTIONAL DESIGN.
4. THIS PART CONFORMS TO PRODUCT SPEC. 08-50.



CHANGE TO ME10 EC NO: UCP2005-0930 DRW: WADPATNOL 2004/11/16 CHK: KS-SAMEC 2004/11/02 APPR: MMARGILLIS 2004/11/02 AM	QUALITY SYMBOLS	GENERAL TOLERANCES (UNLESS SPECIFIED)		DIMENSION STYLE		SCALE	DESIGN UNITS	THIRD ANGLE PROJECTION
	▽=0 ▽=0	mm	INCH	IN/MM		INCH	INCH	
		4 PLACES ± .005	± .005	DRAWN BY	DATE	TITLE		
		3 PLACES ± .010	± .010	CHECKED BY	DATE			
	2 PLACES ± .025	± .025	PATEL	11/29/88	TERMINAL, DBL. CANTILEVER KK CRIMP TYPE BIFURCATED			
	1 PLACE ± .025	± .025	APPROVED BY	DATE				
	ANGULAR ± 1/2°	± 1/2°	LENZ	11/29/88	MOLEX INCORPORATED			
	DRAFT WHERE APPLICABLE MUST REMAIN WITHIN DIMENSIONS		MATERIAL NO.	SEE CHART	DOCUMENT NO.	SD-2878	SHEET NO.	1 OF 2
			SIZE	D	THIS DRAWING CONTAINS INFORMATION THAT IS PROPRIETARY TO MOLEX INCORPORATED AND SHOULD NOT BE USED WITHOUT WRITTEN PERMISSION			

2878-A-A(*)*		2878-B-A(*)*		2878-A-B(*)*											
PART NO.	ENG. NO.	PART NO.	ENG. NO.	PART NO.	ENG. NO.	PART NO.	ENG. NO.	PART NO.	ENG. NO.	PART NO.	ENG. NO.	PART NO.	ENG. NO.	PART NO.	ENG. NO.
08-50-0115	2878-A-A(P909)B			08-55-0138	2878-A-B(555)B										
08-50-0116	2878-A-A(P909)L				2878-A-B(555)L										
		08-52-0126	2878-B-A(P909)B												
		08-52-0127	2878-B-A(P909)L												
		08-65-0118	2878-B-A(555)B												
		08-65-0119	2878-B-A(555)L												
		08-58-0127	2878-B-A(550)B												
		08-58-0128	2878-B-A(550)L												

<b>CHANGE TO ME10</b> EC NO: UCP2005-0930 DRAWN: DRATNOL 2004/11/16 CHK'D: SAMEC 2004/11/02 APPR: WARGULLIS 2004/11/02 <b>AM</b>	<b>QUALITY SYMBOLS</b> ▽=0 ▽=0	<b>GENERAL TOLERANCES (UNLESS SPECIFIED)</b> <table border="1"> <tr> <th></th> <th>mm</th> <th>INCH</th> </tr> <tr> <td>4 PLACES</td> <td>± .005</td> <td>± .0004</td> </tr> <tr> <td>3 PLACES</td> <td>± .004</td> <td>± .0003</td> </tr> <tr> <td>2 PLACES</td> <td>± .003</td> <td>± .0002</td> </tr> <tr> <td>1 PLACE</td> <td>± .002</td> <td>± .0001</td> </tr> </table>		mm	INCH	4 PLACES	± .005	± .0004	3 PLACES	± .004	± .0003	2 PLACES	± .003	± .0002	1 PLACE	± .002	± .0001	<b>DIMENSION STYLE</b> IN/MM	<b>SCALE</b> INCH	<b>DESIGN UNITS</b> INCH	
		mm	INCH																		
	4 PLACES	± .005	± .0004																		
	3 PLACES	± .004	± .0003																		
2 PLACES	± .003	± .0002																			
1 PLACE	± .002	± .0001																			
<b>DESCRIPTION</b> DRAWN BY: COMSTOCK CHECKED BY: PATEL APPROVED BY: LENZ	<b>DATE</b> 11/04/88 11/04/88 11/04/88	<b>TITLE</b> TERMINAL, DBL. CANTILEVER KK CRIMP TYPE BIFURCATED	<b>MATERIAL NO.</b> SEE CHARTS	<b>DOCUMENT NO.</b> SD-2878	<b>SHEET NO.</b> 2																
<b>DRAFT WHERE APPLICABLE MUST REMAIN WITHIN DIMENSIONS</b>	<b>SIZE</b> D	THIS DRAWING CONTAINS INFORMATION THAT IS PROPRIETARY TO MOLEX INCORPORATED AND SHOULD NOT BE USED WITHOUT WRITTEN PERMISSION																			