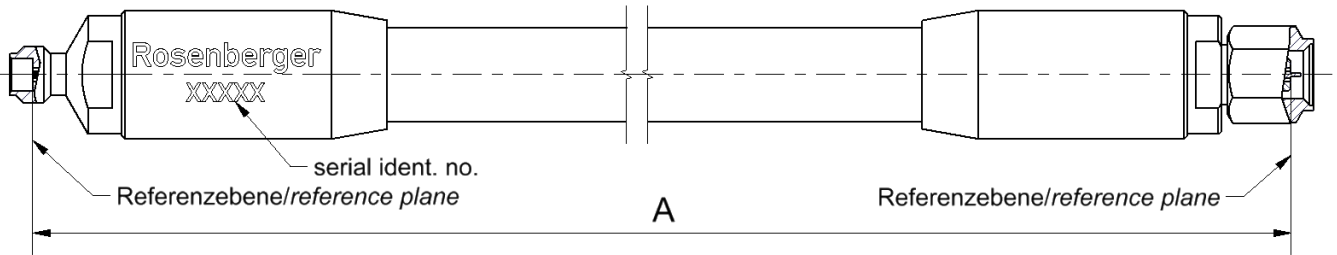


Technical Data Sheet

Rosenberger

Cable assembly
RPC-1.00 Jack / Plug – UT-047-LL

L70-282-XXX



All dimensions are in mm; tolerances: ± 3mm for A ≤ 300 mm; ± 1% for A > 300 mm

Available variants

Type	max. Insertion loss	Weight (g) / pce
L70-282-XXX	$\leq 0.0013 * \sqrt{f[\text{GHz}]} \text{ dB/mm}$	$0.071 \text{ g/mm} * A \text{ mm} + 8.75 \text{ g}$

XXX – length in mm = A Maximum possible length = 6000mm

Note: Weight:
First constant = Cable- and Armour- weight per mm; Second Constant = Connector left and Connector right weight per pce

Assembly parts

Connector left	RPC-1.00 jack
Connector right	RPC-1.00 plug
Cable	UT-047-LL
Armour	silicone rubber jacket over glass fiber braid / stainless steel spiral

Electrical data

Impedance	50 Ω
Frequency	DC to 110 GHz
Return loss	≥ 17 dB, DC to 50 GHz ≥ 14 dB, 50 to 110 GHz
Insertion loss	see table available variants

Individual testing and documentation:
Measurement plot with all 4 S-Parameters (S11; S22; S21; S12) is included with the cable assembly and on the backside the care and handling instruction is printed.

Mechanical data

Minimum bend radius:	
Single	20.0 mm

Environmental data

Temperature range	- 40 °C to +125 °C
RoHS	compliant

While the information has been carefully compiled to the best of our knowledge, nothing is intended as representation or warranty on our part and no statement herein shall be construed as recommendation to infringe existing patents. In the effort to improve our products, we reserve the right to make changes judged to be necessary.

Draft	Date	Approved	Date	Rev.	Engineering change number	Name	Date
Martin Moder	10.06.15	Markus Müller	04.08.16	b00	16-1330	Marcel Panicke	04.08.16

Rosenberger Hochfrequenztechnik GmbH & Co. KG
P.O.Box 1260 D-84526 Tittmoning Germany
www.rosenberger.de

Tel. : +49 8684 18-0
Email : info@rosenberger.de

Page
1 / 1