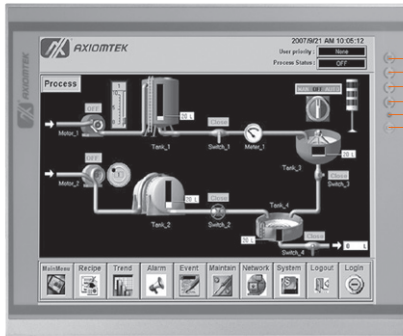


P6151

15" XGA TFT Industrial LCD Monitor

NEW



1. Menu
2. SEL+
3. SEL-
4. Exit
5. Power LED
6. Power Switch

Features

- 15" TFT XGA LED backlight LCD
- NEMA 4/12 (IP65)- compliant panel mounting flat panel monitor
- Supports panel mount, wall mount, rack mount and VESA arm
- Resistive touchscreen
- Supports full range screw-type (locked) AC-in or 12V/24V DC-in (option)
- Supports multi-signal inputs: DVI-D, VGA and HDMI



▲ Ultra-slim mechanism design

Introduction

The P6151 is an ultra slim industrial LCD monitor, which adopts 15-inch 420 nits XGA LED backlight LCD display and supports multi-signal interfaces including DVI, VGA and HDMI. Featuring NEMA 4/12 & IP65 compliant front bezel, screw-type adaptor plug design, and 12/24V DC-In means it is fit for all kinds of industrial environments. Moreover, the P6151 supports panel mount, wall mount, rack mount or VESA FPMPMI (Video Electronics Standards Association Flat Panel Monitor Physical Mounting Interface) mounting. With the compact mechanism design, users can enjoy free from space constraint. It is especially suitable for POI/POS, excellent HMI and all kinds of heavy-duty industrial fields.

Specifications

Front Bezel	NEMA 4/12 (IP65)-compliant, metal front bezel	
Mounting	Panel mount, wall mount, rack mount or VESA FPMPMI mounting (video electronics standards association flat panel monitor physical mounting interface)	
LCD Panel	Display	15" TFT XGA LED
	Max. Resolution	1024 x 768
	Max. Colors	16.7M
	Active Area (mm)	304.128 x 228.096
	Pixel Pitch (mm)	0.297 x 0.297
	Response Time	16ms
	Backlight	LED backlight
	Backlight MTBF	30,000 hrs
	Viewing Angle (H/V)	160°/160°
	Contrast Ratio	800 (TYP.)
Brightness (cd/m ²)	420 nits	
Display Control	OSD (on screen display)	
Display Mode	VGA 640 x 350 (70Hz), VGA 640 x 480 (60/72/75Hz), VGA 720 x 400 (70Hz), SVGA 800 x 600 (60/72/75Hz), XGA 1024 x 768 (60/72/75Hz)	



Specifications

Input Signal	DVI-D VGA HDMI Touchscreen: Serial RS-232 or USB interface
I/O Connectors	1 x RS-232 or USB for touchscreen version 1 x DVI-D 1 x DisplayPort 1 x HDMI 1 x Screw-type DC power input
Power Adapter	Screw-type external AC / DC power adapter
Touchscreen	Thickness Resistive: 3.2 mm
	Light Transmission Resistive: 80%
	Power Consumption Resistive: +5V @ 100mA
	Touch Life Resistive: 35million touches Controller interface: RS-232 D-type 9pin male connector or USB
Dimensions	TBD
Packing Dimensions	TBD
Weight (net/gross)	TBD
Environment	Operating temperature: 0° ~ +50°C (+32°F ~ +122°F) Storage temperature: -20°C ~ +60°C (-4°F ~ +140°F) Relative humidity: 20%-90%@40°C, non-condensing
Certificate	CE

Ordering Information

AC Power	Resistive (RS-232)	P6151PR-AC-RS-US-EU
	Resistive (USB)	P6151PR-AC-U-US-EU
	Glass	P6151PG-AC-US-EU
12V/24VDC Power	Resistive (RS-232)	P6151PR-DC-RS
	Resistive (USB)	P6151PR-DC-U
	Glass	P6151PG-DC

Overview

Fanless
Touch Panel
Computers

Heavy-duty
Fanless Touch
Panel Computers

Industrial
Touch Panel
Computers

4

Industrial Touch
panel Monitors

Infotainment
Touch Panel
Computers

Healthcare
& Medical
Solutions

Open
Frame Panel
Computers

Accessories

