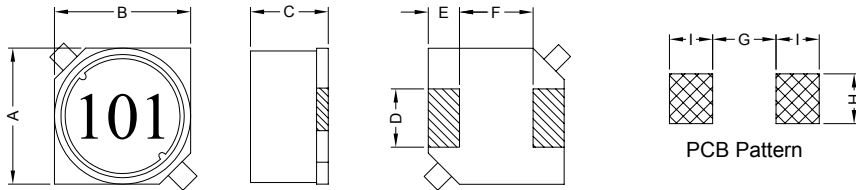


### 1. PART NO. EXPRESSION :

SSB06021R0MZ F  
 (a) (b) (c) (d)(e)(f)

- (a) Series code
- (b) Dimension code
- (c) Inductance code : 1R0 = 1.0uH
- (d) Tolerance code : M = ±20%
- (e) X, Y, Z : Standard part
- (f) F : Lead Free

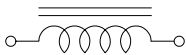
### 2. CONFIGURATION & DIMENSIONS :



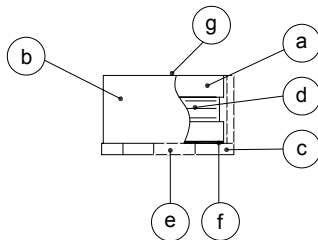
Unit:m/m

A	B	C	D	E	F	G	H	I
6.0±0.3	6.0±0.3	2.5 Max.	2.0±0.2	1.5±0.2	3.0±0.2	2.8 Ref.	2.2 Ref.	1.9 Ref.

### 3. SCHEMATIC :



### 4. MATERIALS :



- (a) Core : DR Ferrite Core
- (b) Core : RI Ferrite Core
- (c) Base : LCP
- (d) Wire : Enamelled Copper Wire
- (e) Terminal : Tinned Copper Plate
- (f) Adhesive : Epoxy
- (g) Ink : Bon Margue

### 5. GENERAL SPECIFICATION :

- a) Temp. rise : 40°C Max.
- b) Rated current : Base on temp. rise & ΔL/L0A = 10% Max.
- c) Storage temp. : -40°C to +125°C
- d) Operating temp. : -40°C to +85°C
- e) Resistance to solder heat : 260°C.10 secs



**RoHS Compliant**

NOTE : Specifications subject to change without notice. Please check our website for latest information.

18.04.2008



**SUPERWORLD ELECTRONICS (S) PTE LTD**

## 6. ELECTRICAL CHARACTERISTICS :

Part No.	Inductance ( $\mu$ H )	Test Frequency ( Hz )	RDC ( m $\Omega$ ) Max.	IDC ( A ) Max.
SSB06021R0MZF	1.0 $\pm$ 20%	1V / 100K	30	2.50
SSB06021R5MZF	1.5 $\pm$ 20%	1V / 100K	35	2.30
SSB06022R2MZF	2.2 $\pm$ 20%	1V / 100K	45	2.00
SSB06023R3MZF	3.3 $\pm$ 20%	1V / 100K	70	1.60
SSB06024R7MZF	4.7 $\pm$ 20%	1V / 100K	85	1.35
SSB06026R8MZF	6.8 $\pm$ 20%	1V / 100K	120	1.10
SSB0602100MZF	10.0 $\pm$ 20%	1V / 100K	170	0.95
SSB0602150MZF	15.0 $\pm$ 20%	1V / 100K	240	0.75
SSB0602220MZF	22.0 $\pm$ 20%	1V / 100K	330	0.65
SSB0602330MZF	33.0 $\pm$ 20%	1V / 100K	480	0.50
SSB0602470MZF	47.0 $\pm$ 20%	1V / 100K	650	0.40
SSB0602680MZF	68.0 $\pm$ 20%	1V / 100K	870	0.30
SSB0602101MZF	100.0 $\pm$ 20%	1V / 100K	1500	0.25
SSB0602151MZF	150.0 $\pm$ 20%	1V / 100K	2300	0.20
SSB0602221MZF	220.0 $\pm$ 20%	1V / 100K	3200	0.18
SSB0602331MZF	330.0 $\pm$ 20%	1V / 100K	4800	0.16
SSB0602471MZF	470.0 $\pm$ 20%	1V / 100K	7200	0.13
SSB0602681MZF	680.0 $\pm$ 20%	1V / 100K	10000	0.11
SSB0602102MZF	1000.0 $\pm$ 20%	1V / 100K	15500	0.09



RoHS Compliant

NOTE : Specifications subject to change without notice. Please check our website for latest information.

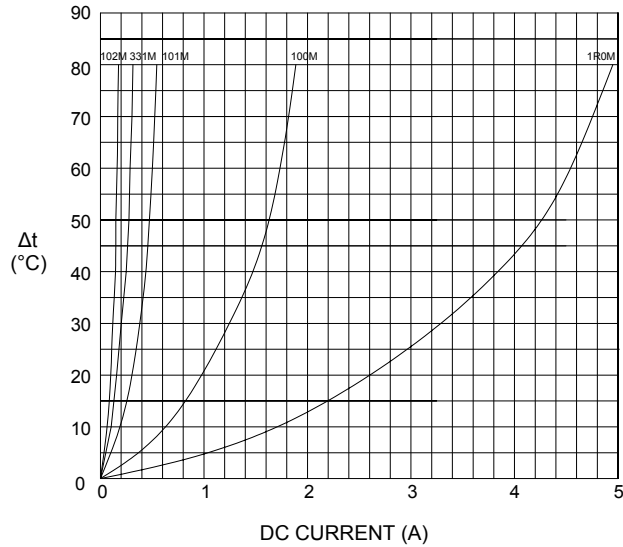
18.04.2008



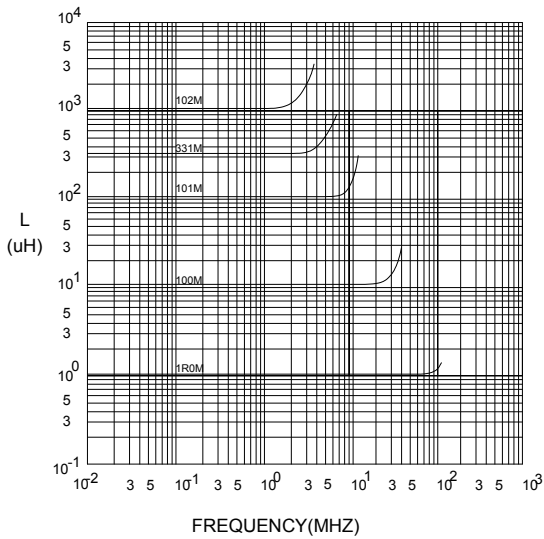
SUPERWORLD ELECTRONICS (S) PTE LTD

## 7. CHARACTERISTICS CURVES :

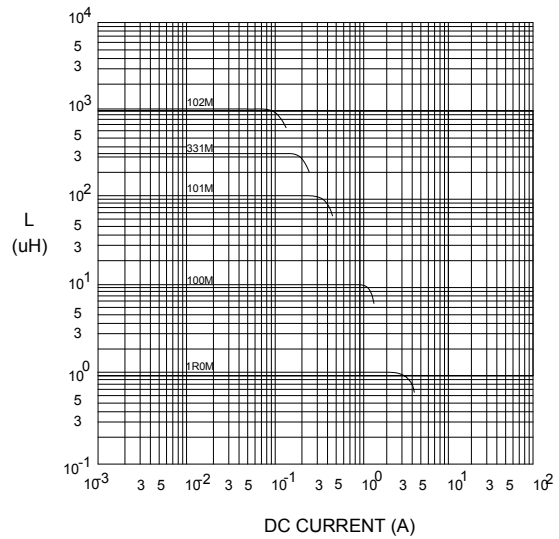
@ TEMP. RISE VS. DC SUPERPOSITION RESPONSE CURVE



@ INDUCTANCE VS. FREQUENCY RESPONSE CURVE



@ INDUCTANCE VS. DC SUPERPOSITION RESPONSE CURVE



**RoHS Compliant**

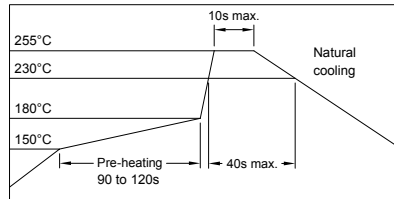
NOTE : Specifications subject to change without notice. Please check our website for latest information.

18.04.2008



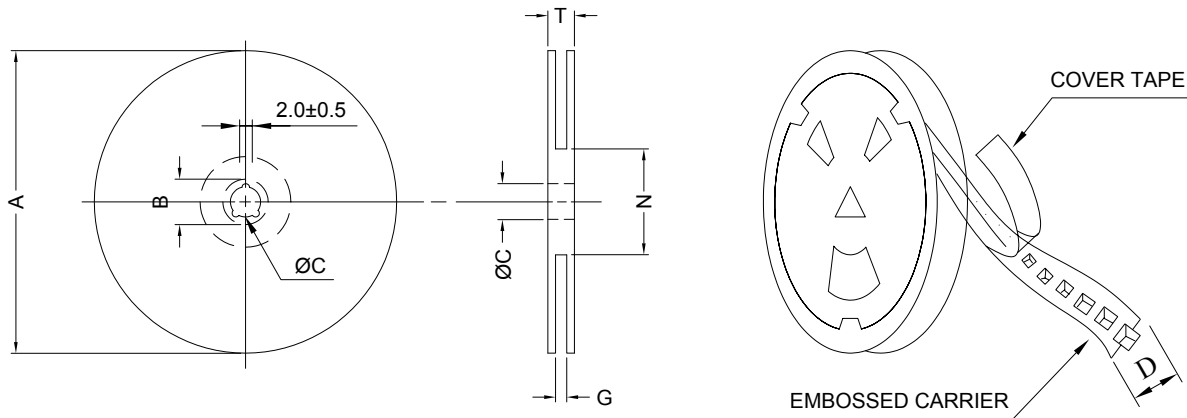
**SUPERWORLD ELECTRONICS (S) PTE LTD**

### RECOMMENDED SOLDERING CONDITIONS REFLOW SOLDERINGS

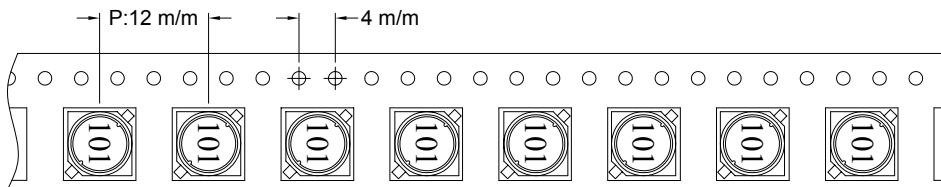


### 8. PACKAGING INFORMATION :

#### ( 1 ) CONFIGURATION



\* CARRIER TAPE WIDTH : D



#### ( 2 ) DIMENSIONS

Unit:m/m

STYLE	A	B	C	D	G	N	T
13-16	330	21±0.8	13	16	18 <sup>+0</sup>	50 <sup>-0</sup>	22.4

#### ( 3 ) Q'TY & G.W. PER PACKAGE

SERIES	INNER : REEL			OUTER : CARTON		
	Q'TY (PCS)	G.W. (gw)	STYLE	Q'TY (PCS)	G.W. (Kg)	SIZE (cm)
SSB0602	1500	720	13-16	9000	7.9	40 x 40 x 24



**RoHS Compliant**

NOTE : Specifications subject to change without notice. Please check our website for latest information.

18.04.2008



**SUPERWORLD ELECTRONICS (S) PTE LTD**

## 9. RELIABILITY AND TEST CONDITION :

TEST ITEM	SPECIFICATION	TEST CONDITION
SOLDERABILITY	MORE THAN 90% OF THE TERMINAL ELECTRODE SHALL BE COVERED WITH FRESH SOLDER.	PREHEAT : 125±25°C FOR 60 SECONDS SOLDER : 99%Sn/0.3%Ag/0.7%Cu or equivalent SOLDER TEMP. : 245±5°C FLUX : ROSIN DIP TIME : 4±1 SECONDS
THERMAL SHOCK TEST  ( TEMP. CYCLE )	INDUCTANCE SHALL NOT CHANGE MORE THAN ±20%	ROOM TEMP. → -25±2°C 15 MINUTES → 30 MINUTES  ROOM TEMP. → 85±2°C 15 MINUTES → 30 MINUTES  TOTAL : 50 CYCLES
HUMIDITY RESISTANCE TEST		TEMPERATURE : 40±2°C HUMIDITY : 90 ~ 95% APPLIED CURRENT : PER SPEC. TIME : 500 HOURS
HIGH TEMP. RESISTANCE TEST		TEMPERATURE : 85±2°C APPLIED CURRENT : PER SPEC. TIME : 500 HOURS



**RoHS Compliant**

NOTE : Specifications subject to change without notice. Please check our website for latest information.

18.04.2008



**SUPERWORLD ELECTRONICS (S) PTE LTD**

**10. UL CARD :**

**OBMW2** **November 30, 2000**  
**Magnet Wire - Component**

**PACIFIC ELECTRIC WIRE & CABLE (SHENZHEN) CO LTD** **E201757**  
**607 BAOLONG INDUSTRIAL ESTATE LONGGANG, SHENZHEN**  
**GUANGDONG CHINA**

Mtl Dsg	BC	Coating Type	TC	ANSI Type	TI
UEW/U		<b>Polyurethane</b>	—	—	<b>130</b>
PEW/U		<b>Polyester</b>	—	<b>MW5-C</b>	<b>155°C</b>
PEWH/U		<b>Modified Polyester</b>	—	<b>MW30-C</b>	<b>180</b>
PEW-NY/U		<b>Polyester</b>	<b>Polyamide</b>	<b>MW24-C</b>	<b>155</b>
HAI/U		<b>Polyester(Amide)(Imide)</b>	<b>Polyamideimide</b>	<b>MW35,73</b>	<b>200</b>
UEW-NY/U		<b>Polyurethane</b>	<b>Polyamide</b>	<b>MW80-C</b>	<b>155</b>
				<b>MW28-C</b>	<b>130</b>

**Marking: Company name and material designation or marked designation on package or reel, and Recognized Component Mark.**

**See General Information Preceding These Recognitions**

**1/3/2001** **Underwriters Laboratories Inc.** **Card 1 of 2**

**SUMITOMO CHEMICAL CO LTD** **E54705 (M)**  
**5-33 KITAHAMA 4-CHOME CHUO-KO, OSAKA JAPAN**

Mtl Dsg	Col	Min Thk mm	UL94 Flame Class	Elec	RTI		w/o Imp	H W I	H A I	H V R	D 4 T 5	C T I
					with Imp	Mech						
Liquid crystal polyester (LCP), designated "EKONOL" or "SUMIKASUPER", furnished in the form of pellets, (Contd)												
E4008, E400X	NC, BK	0.30	94V-0	130	130	130	—	—	—	—	—	—
		0.75	94V-0	130	130	130	3	4	—	—	—	—
		1.5	94V-0	130	130	130	2	4	—	—	—	—
		3.0	94V-0	130	130	130	1	4	0	5	4	—
E4008	NC, WT, BK	0.30	94V-0	130	130	130	—	—	—	—	—	—
		0.75	94V-0	220	180	220	3	4	—	—	—	—
		1.5	94V-0	220	200	240	2	4	—	—	—	—
		3.0	94V-0	220	200	240	1	4	0	5	4	—
E4010	NC, BK	0.30	94V-0	130	130	130	—	—	—	—	—	—
		0.75	94V-0	220	180	220	3	4	—	—	—	—
		1.5	94V-0	220	200	240	2	4	—	—	—	—
		3.0	94V-0	220	200	240	1	4	0	5	4	—
E400(Y)L, E4008L	NC, BK	0.30	94V-0	130	130	130	—	—	—	—	—	—
		0.75	94V-0	130	130	130	3	4	—	—	—	—
		1.5	94V-0	130	130	130	2	4	—	—	—	—
		3.0	94V-0	130	130	130	1	4	0	5	4	—
E4810	NC, BK	0.30	94V-0	130	130	130	—	—	—	—	—	—
		0.75	94V-0	130	130	130	0	4	—	—	—	—
		1.5	94V-0	130	130	130	0	4	—	—	—	—
		3.0	94V-0	130	130	130	1	4	0	5	4	—

(X) Denotes any number 1 thru 9.  
(Y) Denotes any number 1 thru 7.



**RoHS Compliant**

NOTE : Specifications subject to change without notice. Please check our website for latest information.

18.04.2008



**SUPERWORLD ELECTRONICS (S) PTE LTD**