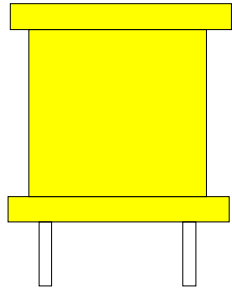


# Power Line Chokes Drum Core Style



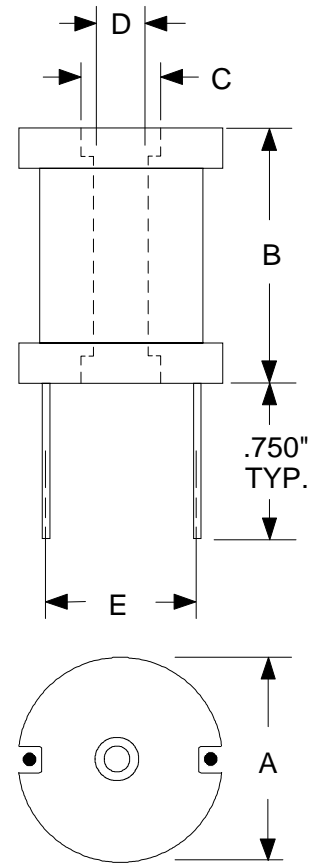
## Applications

Power Amplifiers  
Filters • Power Supplies  
SCR and Triac Controls  
Speaker Crossover Networks  
RFI Suppression

Part Number	L ± 20% ( $\mu$ H)	DCR Nom. (m $\Omega$ )	I Max. (A)	Lead Size AWG	Pkg. Code
L-12200	2.0	5	12.0	14	1
L-12201	3.0	7	10.0	15	1
L-12202	4.0	10	8.5	16	1
L-12203	8.0	12	7.0	17	1
L-12204	18	13	7.0	17	1
L-12205	22	16	5.5	18	1
L-12206	30	21	4.3	19	1
L-12207	37	32	3.4	20	1
L-12219	4.0	6	12.0	14	2
L-12220	5.0	8	10.0	15	2
L-12221	20	13	8.5	16	2
L-12222	30	19	7.0	17	2
L-12223	40	25	5.5	18	2
L-12224	75	42	4.3	19	2
L-12225	120	53	4.3	19	2
L-12226	150	72	3.4	20	2
L-12227	200	105	2.6	20	2
L-12235	40	13	12.0	14	3
L-12236	60	19	10.0	15	3
L-12237	80	22	10.0	15	3
L-12238	120	32	8.5	16	3
L-12239	150	38	8.5	16	3
L-12240	175	46	7.0	17	3
L-12241	200	49	7.0	17	3
L-12242	300	73	5.5	18	3
L-12243	400	86	5.5	18	3
L-12244	475	110	4.3	19	3
L-12245	550	120	4.3	20	3
L-12246	700	165	3.4	20	3
L-12247	825	183	3.4	20	3
L-12254	100	22	12.0	14	4
L-12255	150	34	10.0	15	4
L-12256	200	38	10.0	15	4
L-12257	300	56	8.5	16	4
L-12258	375	65	8.5	16	4
L-12259	450	70	8.5	16	4
L-12260	500	89	7.0	17	4
L-12261	600	98	7.0	17	4
L-12262	700	130	5.5	18	4
L-12263	850	145	5.5	18	4
L-12264	1000	166	5.5	18	4
L-12265	1300	218	4.3	19	4
L-12266	1600	250	4.3	20	4
L-12267	2000	340	3.4	20	4

## Pre-Tinned Leads

Center hole for mechanical mounting  
Coils finished with Polyolefin Shrink Tube  
Test Frequency 1 kHz



Pkg. Code	(Dimensions in inches)				
	A	B	C	D	E
1	0.560	0.810	0.187	0.126	0.510
2	0.720	0.900	0.187	0.126	0.625
3	0.955	0.975	0.187	0.126	0.775
4	1.400	1.040	0.288	0.170	1.140