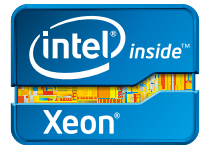
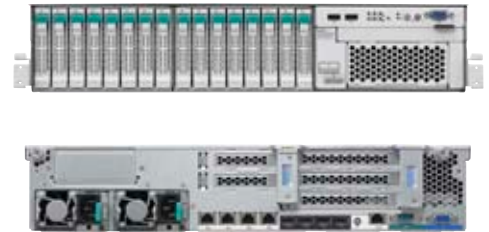


The flexible compact rack server

NEC Express5800/R120d-2E

POWERFUL AND ENERGY EFFICIENT SERVERS FOR THE CORE BUSINESS APPLICATIONS



HIGH PERFORMANCE

SUPERIOR ENERGY EFFICIENCY

SIMPLIFIED MANAGEABILITY

Scalable and Green

The Express5800/R120d-2E, a small footprint server, provides exceptional performance, scalability, and enterprise-class availability. This server offers large-capacity hard drives and memory to support growth of your business. NEC's industry-leading cooling technology enables operation at 40-degree Celsius (104 Fahrenheit) to reduce power consumption by minimizing cooling requirements.

Flexible Computing Environment

The Express5800/R120d-2E, an Intel® processor-based dual-socket 2U rack-mount, is perfect for high-performance and I/O scalability in a small space. To keep your business running during a system error and to minimize its impact, the R120d-2E supports various redundant components in addition to remote management functions. Suitable for small-to medium-sized businesses, datacenter virtualization, and collaboration applications.

High Performance

- Supports the Intel® Xeon® E5-2400 product family 8-core processor for maximum energy efficiency and performance
- Up to 384 GB memory - perfect for consolidation of business application servers or desktop virtualization at SMBs
- RAID controller with CacheCade™ technology and a dual-core I/O processor for significant reduction in I/O latency

Superior Energy Efficiency

- 80 PLUS® Platinum certified power supply
- Selectable power supply units (450 Watt or 800 Watt) and cold-standby mode maximize AC/DC efficiency for any size system
- NEC's cooling technology and intelligent fan control minimize power consumption for cooling speeds

Simplified Manageability

- EXPRESSSCOPE Engine 3 supports remote management in a secure communication environment without any special software
- Standard with NEC's unique setup tool, the EXPRESSBUILDER, to enable auto OS installation on a 2-minute manual setting without technical skills

HARDWARE SPECIFICATION

MODEL	Express5800/R120d-2E
Form factor / height	2U Rack
Number of processors	1 to 2
Processors	Intel® Xeon® Processor E5-2403 (1.80 GHz/4-core/10 MB) Intel® Xeon® Processor E5-2407 (2.20 GHz/4-core/10 MB) Intel® Xeon® Processor E5-2420 (1.90 GHz/6-core/15 MB) Intel® Xeon® Processor E5-2430 (2.20 GHz/6-core/15 MB) Intel® Xeon® Processor E5-2430L (2 GHz/6-core/15 MB) Intel® Xeon® Processor E5-2450 (2.10 GHz/8-core/20 MB) Intel® Xeon® Processor E5-2470 (2.30 GHz/8-core/20 MB)
Memory type	DDR3-1333 ECC LV UDIMM, DDR3-1600 ECC LV RDIMM, DDR3-1066 ECC LV RDIMM
Memory slots	12
Maximum memory	384 GB
Storage type	Hot plug 2.5-inch SAS and SATA HDD, Hot plug 2.5-inch SAS and SATA SSD
Maximum internal drive bays	8 to 16 with optional drive cage
Maximum internal storage	16 TB
Removable media	1 bay for optical drive, 1 bay for internal tape drive
Expansion slots	1 PCIe x8 Gen 3, 2 PCIe x4 Gen 3, 1 PCIe x4 Gen 2, 1 PCIe x1 Gen 2, 1 PCIe x8 Gen 3 for a RAID controller
Video (VRAM)	Integrated in the server management controller (32 MB)
Network	4 1000BASE-T plus 1 100BASE-TX for management
Maximum power consumption	782 VA / 770 Watt (at 100 VAC)
Redundant power supply	Optional, hot plug
Redundant cooling fan	Optional, hot plug
Power supplies	450 Watt, 800 Watt
Systems management	EXPRESSSCOPE Engine 3
Interface	2 VGA, 1 to 2 serial, 6 USB 2.0 (plus 3 internal USB 2.0), 4 LAN, 1 management LAN
Dimensions (W x D x H) and maximum weight	448.0 x 696.3 x 87.4 mm / 17.6 x 27.4 x 3.4 in / 29 kg / 63.93 lbs.
Temperature and humidity conditions (non-condensing)	Operating: 10 to 40* °C / 50 to 104* °F, 20 to 80%, Non-operating: -10 to 55°C / 14 to 131°F, 20 to 80% * In specific configurations, the operable ambient temperature is up to 35°C/95°F
Operating systems and virtualization software	Microsoft® Windows Server® 2003 R2, Standard Edition / Enterprise Edition Microsoft® Windows Server® 2003 R2, Standard x64 Edition / Enterprise x64 Edition Microsoft® Windows Server® 2008 Standard / Enterprise Microsoft® Windows Server® 2008 Standard (x64) / Enterprise (x64) Microsoft® Windows Server® 2008 R2 Standard / Enterprise Red Hat® Enterprise Linux® 5 Red Hat® Enterprise Linux® 6 VMware® ESX™ 4 VMware® ESX™ 1 5

Note : For Linux support, go to the NEC website at <http://www.nec.com/global/prod/express/linux/>, or contact our sales representative

©Copyright 2012 NEC Corporation. The information and specification contained in this publication are subject to modification without prior notice. Microsoft and Windows Server are either registered trademarks or trademarks of Microsoft Corporation in the United States and/or other countries. Intel, Intel Logo, Pentium, Pentium Inside, Xeon, and Xeon Inside are trademarks of Intel Corporation in the U.S. and/or other countries. Linux is a trademark of Linus Torvalds. Red Hat is a registered trademark of Red Hat, Inc. in the U.S. VMware is a registered trademark or trademark of VMware, Inc. in the United States and/or other jurisdictions. All other names of products and brands cited are the property of their respective owners. NEC declines all responsibility in the case of photographic or typing errors.



Asia (APAC)
NEC Corporation

7-1, Shiba 5-chome Minato-ku
Tokyo 108-8001 Japan

www.nec.com/express

Europe (EMEA)
NEC France
IT Platform Solutions Division

29, rue des Hautes Pâtures
92737 Nanterre Cedex France
+33 1 46 49 46 49

www.nec-itplatform.com

North America
NEC Corporation of America
Information Technology Group

2880 Scott Blvd.
Santa Clara, CA 95050 U.S.
+1 866 632 3226

www.necam.com/servers