



# SAW Components

Data Sheet B9300





**SAW Components**

**B9300**

**Low-Loss Dual Band Filter for Mobile Communication**

**1842,5 & 1960,0 MHz**

**Data Sheet**



**Chip Sized Saw Package QCS10H**

**Features**

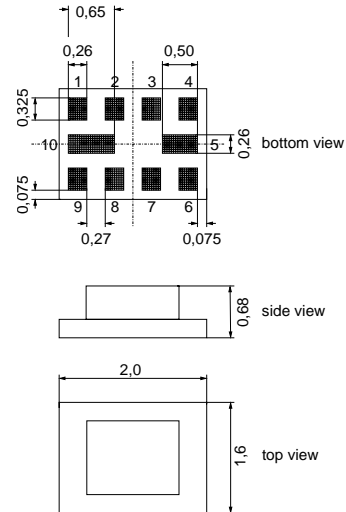
- Low-loss 2-in-1 RF filter for mobile telephone GSM1800 and GSM1900 systems, receive path
- Usable passband:  
Filter 1 (GSM 1900): 60 MHz  
Filter 2 (GSM 1800): 75 MHz
- Unbalanced to balanced operation for both filters
- Impedance transformation from 50 Ω to 150 Ω for both filters
- Suitable for GPRS class 1 to 12
- Package for **Surface Mounted Technology (SMT)**
- Pb-free

**Terminals**

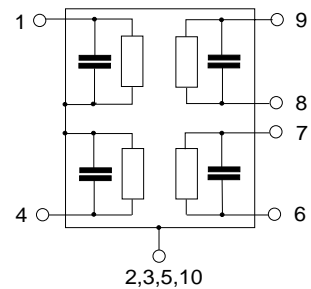
- Ni, gold-plated

**Pin configuration**

- |          |                             |
|----------|-----------------------------|
| 1        | Input [Filter 1]            |
| 4        | Input [Filter 2]            |
| 6,7      | Output, balanced [Filter 2] |
| 8,9      | Output, balanced [Filter 1] |
| 2,3,5,10 | Case-ground                 |



Dimensions in mm, approx. weight t.b.d.



Type	Ordering code	Marking and Package according to	Packing according to
B9300	B39202-B9300-G110	C61157-A7-A141	F61074-V8152-Z000

**Electrostatic Sensitive Device (ESD)**

**Maximum ratings**

Operable temperature range	$T$	- 40 /+ 85	°C	machine model, 10 pulses <sup>1)</sup>
Storage temperature range	$T_{stg}$	- 40 /+ 85	°C	
DC voltage	$V_{DC}$	5	V	
ESD voltage	$V_{ESD}$	50	V	
Input power at GSM850, GSM900, GSM1800, GSM1900 TX bands	$P_{IN}$	15	dBm	

1) acc. to JESD22-A115A (Machine Model), 10 negative & 10 positive pulses



**Characteristics of Filter 1 (GSM 1900)**

Operating temperature range:  $T = 25\text{ }^{\circ}\text{C}$   
 Terminating source impedance:  $Z_S = 50\ \Omega$   
 Terminating load impedance:  $Z_L = 150\ \Omega \parallel 18\text{nH}$  (balanced)

		min.	typ.	max.	
<b>Center frequency</b>	$f_c$	—	1960,0	—	MHz
<b>Maximum insertion attenuation</b>	$\alpha_{\max}$	—	1,6	2,1	dB
1930,0 ... 1990,0MHz					
<b>Amplitude ripple (p-p)</b>	$\Delta\alpha$	—	0,5	1,0	dB
1930,0 ... 1990,0MHz					
<b>Input VSWR</b>		—	1,7	2,0	
1930,0 ... 1990,0MHz					
<b>Output VSWR</b>		—	1,7	2,0	
1930,0 ... 1990,0MHz					
<b>Output phase balance (<math>\Phi(S_{31}) - \Phi(S_{21}) + 180^{\circ}</math>)</b>		-10	-2/+4	+10	degree
1930,0 ... 1990,0MHz					
<b>Output amplitude balance (<math> S_{31}/S_{21} </math>)</b>		-1,2	-0,6/+0,6	+1,2	dB
1930,0 ... 1990,0MHz					
<b>Attenuation</b>	$\alpha_{\min}$	40,0	43	—	dB
10,0 ... 1510,0MHz					
1510,0 ... 1830,0MHz		30,0	36	—	
1830,0 ... 1850,0MHz		26,0	32	—	
1850,0 ... 1890,0MHz		23,0	28	—	
1890,0 ... 1910,0MHz		13,0	18	—	
2010,0 ... 2070,0MHz		13,0	15	—	
2070,0 ... 2400,0MHz		22,0	26	—	
2400,0 ... 6000,0MHz		30,0	34	—	



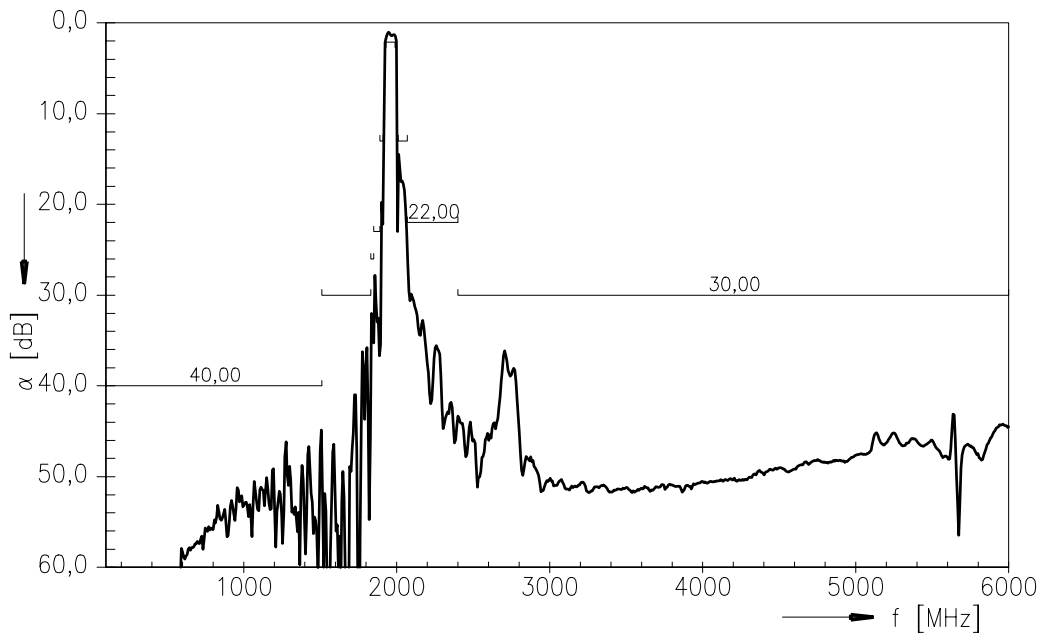
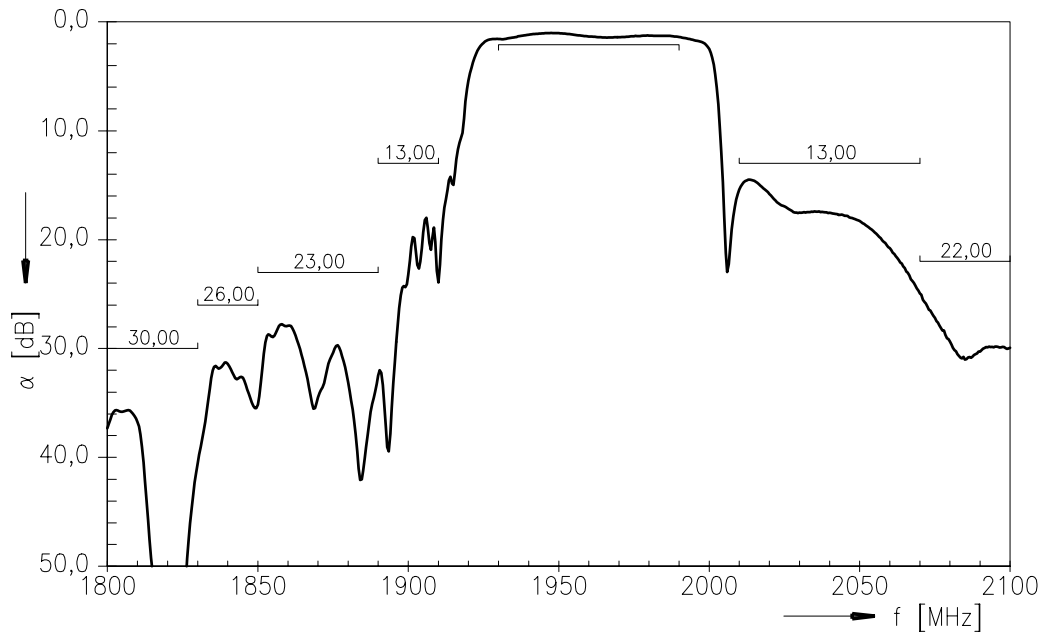
**Characteristics of Filter 1 (GSM 1900)**

Operating temperature range:  $T = -20$  to  $+75$  °C  
 Terminating source impedance:  $Z_S = 50 \Omega$   
 Terminating load impedance:  $Z_L = 150 \Omega \parallel 18nH$  (balanced)

		min.	typ.	max.	
<b>Center frequency</b>	$f_c$	—	1960,0	—	MHz
<b>Maximum insertion attenuation</b>	$\alpha_{max}$	—	1,7	2,3	dB
1930,0 ... 1990,0MHz					
<b>Amplitude ripple (p-p)</b>	$\Delta\alpha$	—	0,6	1,3	dB
1930,0 ... 1990,0MHz					
<b>Input VSWR</b>		—	1,7	2,0	
1930,0 ... 1990,0MHz					
<b>Output VSWR</b>		—	1,7	2,0	
1930,0 ... 1990,0MHz					
<b>Output phase balance (<math>\Phi(S_{31}) - \Phi(S_{21}) + 180^\circ</math>)</b>		-10	-3/+5	+10	degree
1930,0 ... 1990,0MHz					
<b>Output amplitude balance (<math> S_{31}/S_{21} </math>)</b>		-1,2	-0,7/+0,7	+1,2	dB
1930,0 ... 1990,0MHz					
<b>Attenuation</b>	$\alpha_{min}$				
10,0 ... 1510,0MHz		40,0	43	—	dB
1510,0 ... 1830,0MHz		30,0	35	—	dB
1830,0 ... 1850,0MHz		26,0	32	—	dB
1850,0 ... 1890,0MHz		23,0	27	—	dB
1890,0 ... 1910,0MHz		12,0	16	—	dB
2010,0 ... 2070,0MHz		12,0	15	—	dB
2070,0 ... 2400,0MHz		21,0	24	—	dB
2400,0 ... 6000,0MHz		30,0	34	—	dB



Transfer Function of Filter 1 (GSM 1900)





**Characteristics of Filter 2 (GSM1800)**

Operating temperature range:  $T = 25\text{ }^{\circ}\text{C}$   
 Terminating source impedance:  $Z_S = 50\ \Omega$   
 Terminating load impedance:  $Z_L = 150\ \Omega \parallel 15\text{nH}$  (balanced)

		min.	typ.	max.	
<b>Center frequency</b>	$f_c$	—	1842,5	—	MHz
<b>Maximum insertion attenuation</b>	$\alpha_{\max}$	—	1,6	2,1	dB
1805,0 ... 1880,0MHz					
<b>Amplitude ripple</b>	$\Delta\alpha$	—	0,5	1,0	dB
1805,0 ... 1880,0MHz					
<b>Input VSWR</b>		—	1,8	2,2	
1805,0 ... 1880,0MHz					
<b>Output VSWR</b>		—	1,7	2,2	
1805,0 ... 1880,0MHz					
<b>Output phase balance (<math>\Phi(S_{31}) - \Phi(S_{21}) + 180^{\circ}</math>)</b>		- 10	-3/+3	+10	degree
1805,0 ... 1880,0MHz					
<b>Output amplitude balance (<math> S_{31}/S_{21} </math>)</b>		-1,0	-0,6/+0,4	+1,0	dB
1805,0 ... 1880,0MHz					
<b>Attenuation</b>	$\alpha_{\min}$				
10,0 ... 902,0MHz		30,0	52	—	dB
902,0 ... 940,0MHz		45,0	52	—	dB
940,0 ... 1705,0MHz		28,0	42	—	dB
1705,0 ... 1785,0MHz		13,0	18	—	dB
1920,0 ... 1980,0MHz		17,0	23	—	dB
1980,0 ... 2030,0MHz		24,0	28	—	dB
2030,0 ... 2400,0MHz		28,0	34	—	dB
2400,0 ... 6000,0MHz		28,0	32	—	dB



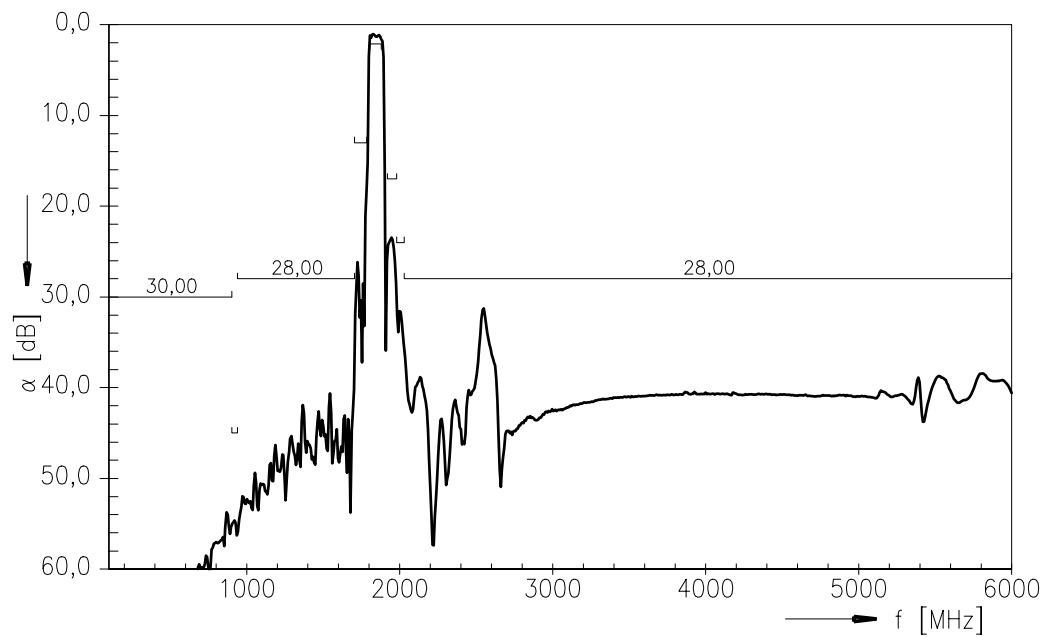
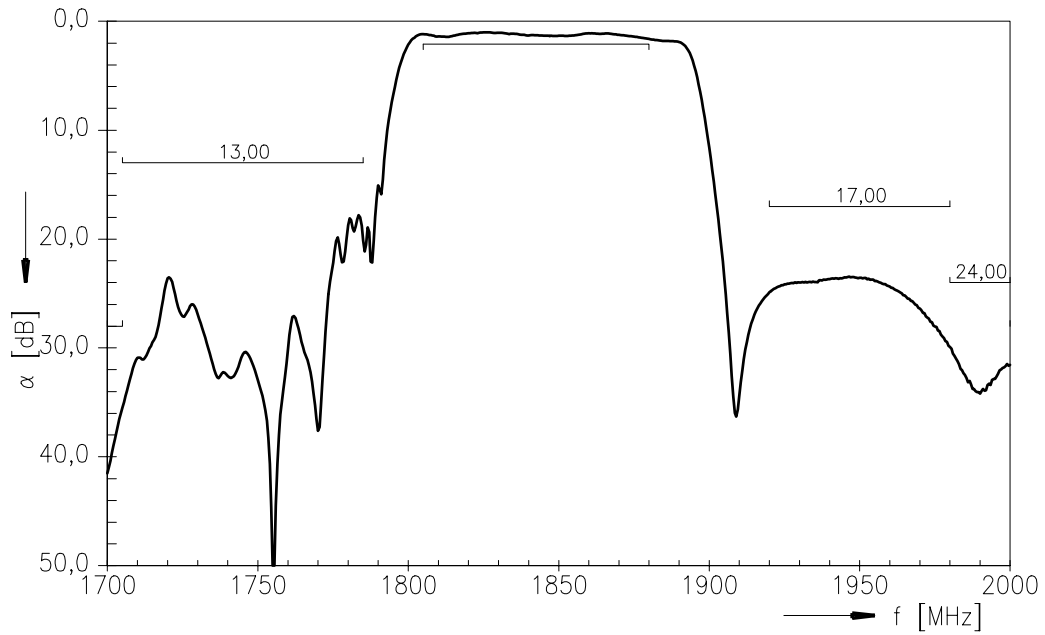
**Characteristics of Filter 2 (GSM1800)**

Operating temperature range:  $T = -20$  to  $+75$  °C  
 Terminating source impedance:  $Z_S = 50 \Omega$   
 Terminating load impedance:  $Z_L = 150 \Omega \parallel 15nH$  (balanced)

		min.	typ.	max.	
<b>Center frequency</b>	$f_c$	—	1842,5	—	MHz
<b>Maximum insertion attenuation</b>	$\alpha_{max}$	—	1,8	2,3	dB
1805,0 ... 1880,0MHz					
<b>Amplitude ripple</b>	$\Delta\alpha$	—	0,7	1,3	dB
1805,0 ... 1880,0MHz					
<b>Input VSWR</b>		—	1,8	2,2	
1805,0 ... 1880,0MHz					
<b>Output VSWR</b>		—	1,7	2,2	
1805,0 ... 1880,0MHz					
<b>Output phase balance (<math>\Phi(S_{31}) - \Phi(S_{21}) + 180^\circ</math>)</b>		- 10	-3/+3	+10	degree
1805,0 ... 1880,0MHz					
<b>Output amplitude balance (<math> S_{31}/S_{21} </math>)</b>		-1,0	-0,7/+0,5	+1,0	dB
1805,0 ... 1880,0MHz					
<b>Attenuation</b>	$\alpha_{min}$				
10,0 ... 902,0MHz		30,0	52	—	dB
902,0 ... 940,0MHz		45,0	52	—	dB
940,0 ... 1705,0MHz		28,0	42	—	dB
1705,0 ... 1785,0MHz		12,0	15	—	dB
1920,0 ... 1980,0MHz		17,0	23	—	dB
1980,0 ... 2030,0MHz		24,0	28	—	dB
2030,0 ... 2400,0MHz		28,0	34	—	dB
2400,0 ... 6000,0MHz		28,0	32	—	dB



Transfer Function of Filter 2 (GSM 1800)







**SAW Components**

**B9300**

**Low-Loss Dual Band Filter for Mobile Communication**

**1842,5 & 1960,0 MHz**

Data Sheet



**Published by EPCOS AG**

**Surface Acoustic Wave Components Division, SAW MC WT**

**P.O. Box 80 17 09, 81617 Munich, GERMANY**

© EPCOS AG 2005. Reproduction, publication and dissemination of this brochure and the information contained therein without EPCOS' prior express consent is prohibited.

Purchase orders are subject to the General Conditions for the Supply of Products and Services of the Electrical and Electronics Industry recommended by the ZVEI (German Electrical and Electronic Manufacturers' Association), unless otherwise agreed.

This brochure replaces the previous edition.

For questions on technology, prices and delivery please contact the Sales Offices of EPCOS AG or the international Representatives.

Due to technical requirements components may contain dangerous substances. For information on the type in question please also contact one of our Sales Offices.