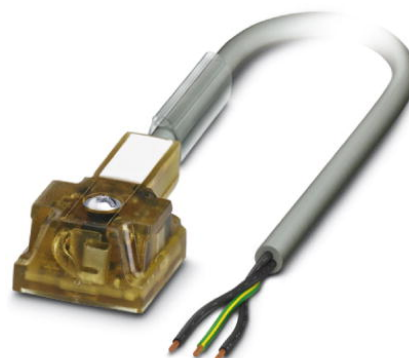



## SAC-3P- 1,5-PUR/A-1L-S F

Order No.: 1669916



<http://eshop.phoenixcontact.de/phoenix/treeViewClick.do?UID=1669916>

Sensor/Actuator cable, 3-position, PUR/PVC, Gray RAL 7001, Free conductor end, on Valve plug A, with 1 LED, connected with Z diode, Cable length: 1.5 m

Commercial data	
GTIN (EAN)	 4 017918 134815
sales group	D113
Pack	5 pcs.
Customs tariff	85444290
Catalog page information	Page 108 (PC-2002)

### Product notes

WEEE/RoHS-compliant since:  
12/01/2005



<http://www.download.phoenixcontact.com>  
Please note that the data given here has been taken from the online catalog. For comprehensive information and data, please refer to the user documentation. The General Terms and Conditions of Use apply to Internet downloads.

Technical data	
<b>General data</b>	
Rated current at 40°C	4 A
Rated voltage	24 V
Number of positions	3
Volume resistance	≤ 15 mΩ

Insulation resistance	≥ 100 MΩ
Length of cable	1.5 m
Stripping length of the free conductor end	50 mm

**General characteristics**

Surge voltage category	II
Pollution degree	3
Degree of protection	IP67
Contact material	CuSn
Contact surface material	Ag
Valve plug contact insert material	PBT
Material, housing, valve plug	PBT
Sealing material	TPU (Flat gasket valve plug)
Status display	1 LED
Protective circuit/component	Z diode

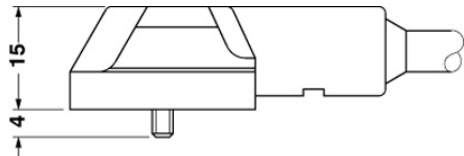
**Conductor data**

Cable type	PUR/PVC black
Cable abbreviation	LiYY11Y-JZ
Conductor cross section	0.75 mm <sup>2</sup>
AWG signal line	18
Conductor structure signal line	24x 0.20 mm
Core diameter including insulation	Approx. 1.8 mm
Thickness, insulation	Approx. 0.34 mm (Core insulation)
	Approx. 0.35 mm (Outer cable sheath)
	Approx. 0.3 mm (Inner sheath)
External cable diameter	5.20 mm
Wire colors	Black 1, black 2, green/yellow
External sheath, color	Gray RAL 7001
Insulation resistance	≥ 1 MΩ*km
Nominal voltage, conductor	240 V
Test voltage, conductor	2000 V
Overall twist	3 concentrically twisted wires
Length of twist, overall twist	83 mm
Outer sheath, material	PUR
Material, inner sheath	PVC

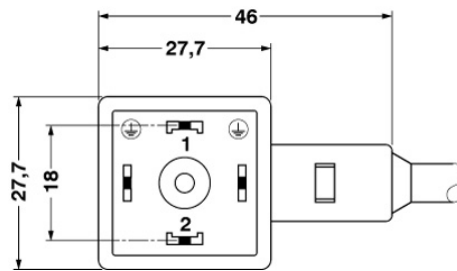
Material conductor insulation	PVC
Conductor material	Bare Cu litz wires
Smallest bending radius, movable installation	62 mm

**Diagrams/Drawings**

Dimensioned drawing

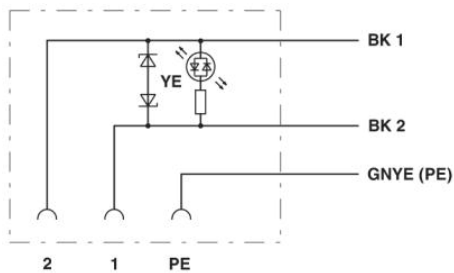


Valve plug, type A, flat



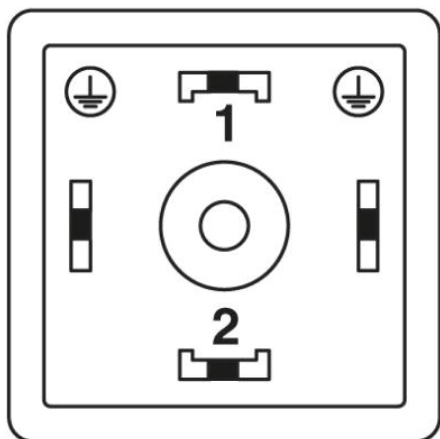
Valve plug, type A, flat

Circuit diagram



Contact assignment of the valve plug

Schematic diagram



Valve connector pin assignment, type A

**Address**

PHOENIX CONTACT Deutschland GmbH  
Flachmarktstr. 8  
32825 Blomberg, Germany  
Phone +49 5235 3 12000  
Fax +49 5235 3 41200  
<http://www.phoenixcontact.de>



© 2011 Phoenix Contact  
Technical modifications reserved;