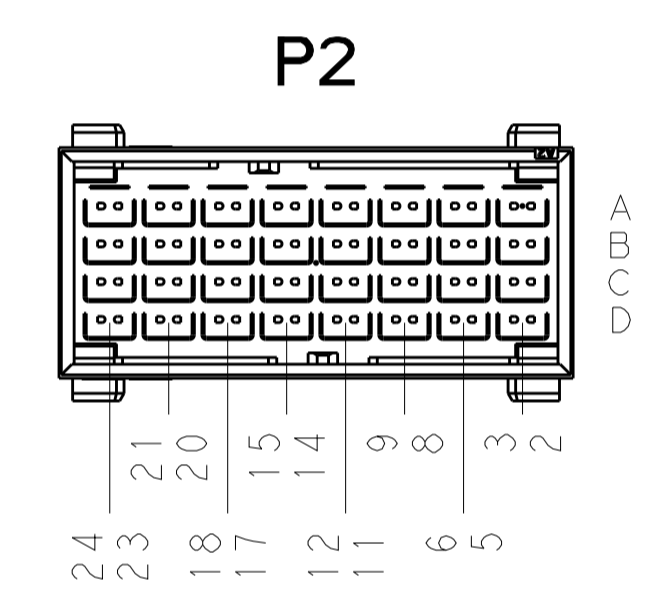
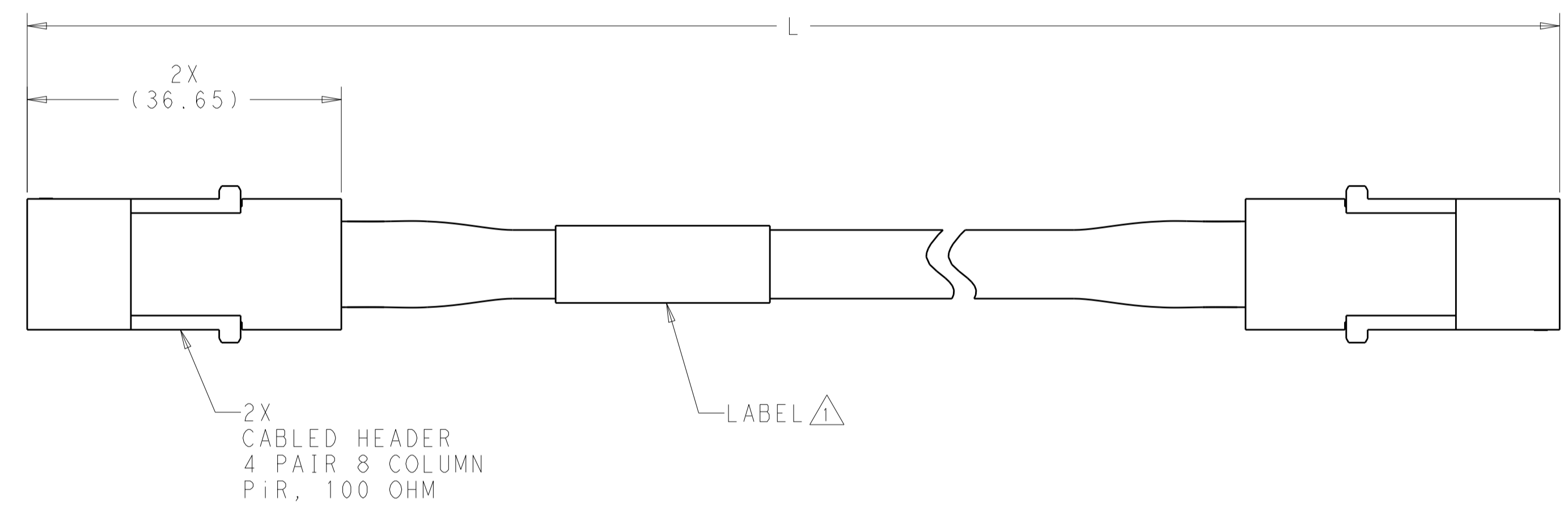
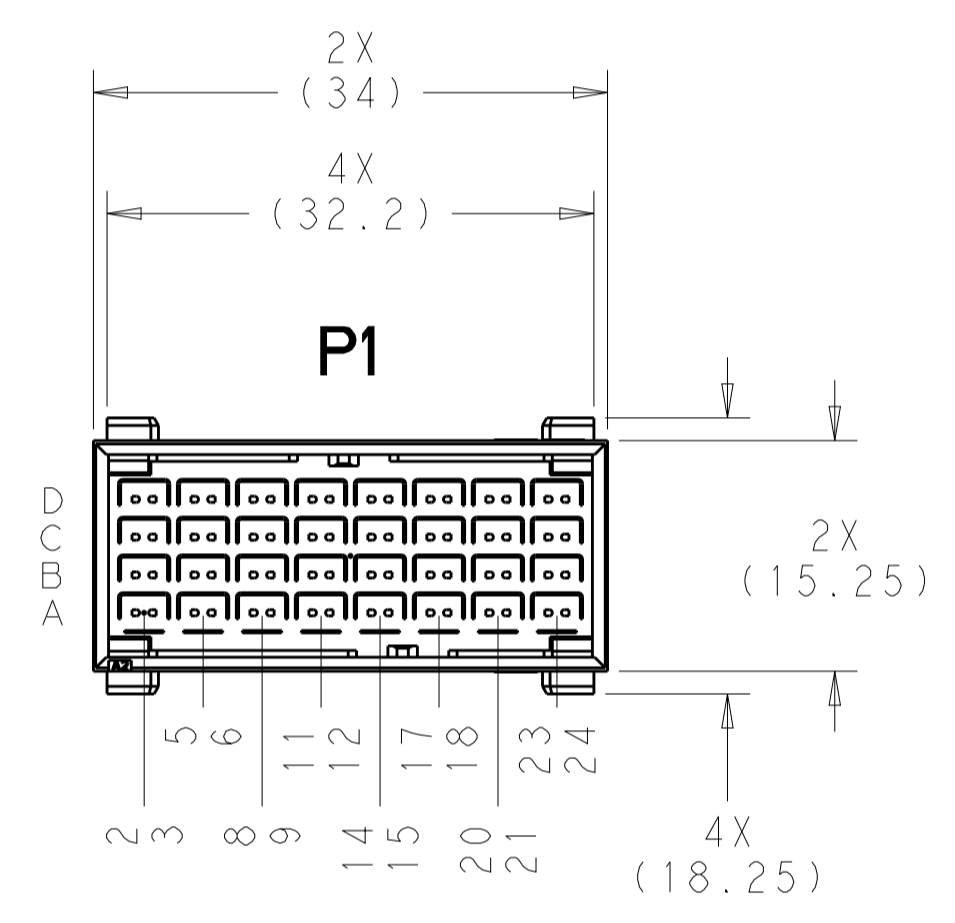
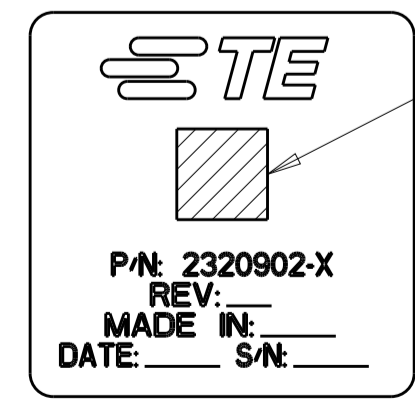


REVISIONS				
P.	LTM	DESCRIPTION	DATE	APVD
1		PROPOSED	08JUN2017	REH KS



1 LABEL INFORMATION:



BARCODE INFO:
 2320902-dxxwyysss
 d=DASH NUMBER
 xx=MANUFACTURING SITE
 US=UNITED STATES, CN=CHINA, MX=MEXICO
 ww=WEEK
 yy=YEAR
 sss=SERIAL NUMBER 000 THRU 999

- EACH CABLE ASSEMBLY TESTED FOR CONTINUITY, OPENS AND SHORTS.
- SEE SHEET 2 FOR WIRING DIAGRAM.
- EACH HIGH SPEED CABLET TESTED ON NETWORK ANALYZER, SERIALIZED, AND DATA SAVED.

THIS PRODUCT HAS NOT COMPLETED VALIDATION AND QUALIFICATION TESTING

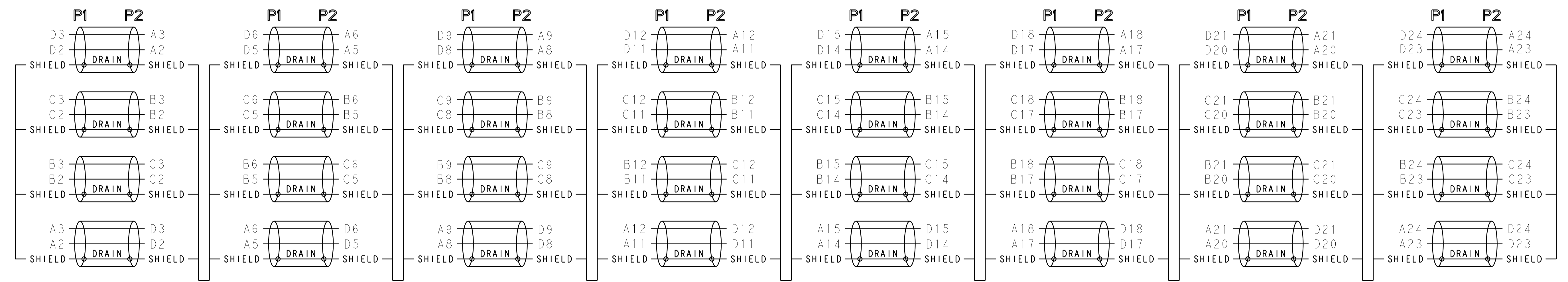
PRELIMINARY NOT RELEASED FOR PRODUCTION

1508	6-2320902-6
1008	5-2320902-6
508	3-2320902-6
L±3	PART NUMBER

THIS DRAWING IS A CONTROLLED DOCUMENT.		OWN: HAMNER 08JUN2017	STE Connectivity	
DIMENSIONS: mm		CHK: K. SAMMON 15JUN2017	NAME: CABLE ASSEMBLY, 100 OHM, PiR, 4 PAIR, 8 COLUMN, 20G, 2-2 WIRING, A-D	
TOLERANCES UNLESS OTHERWISE SPECIFIED:		APVD: K. SAMMON 15JUN2017	SIZE: A1	
0 PLC ±	1 PLC ±	PRODUCT SPEC	RESTRICTED TO	
2 PLC ±	3 PLC ±	APPLICATION SPEC	CAGE CODE DRAWING NO	
4 PLC ±	ANGLES ±	WEIGHT	SCALE 2:1 SHEET 1 OF 2 REV 1	
MATERIAL	FINISH	Customer Drawing	©=2320902	

REVISIONS				
P.	LTN.	DESCRIPTION	DATE	APVD.
-	-	SEE SHEET 1	-	-

WIRING DIAGRAM



THIS PRODUCT HAS NOT COMPLETED VALIDATION AND QUALIFICATION TESTING

PRELIMINARY NOT RELEASED FOR PRODUCTION

THIS DRAWING IS A CONTROLLED DOCUMENT.		DWN: HAMNER 08JUN2017	TE Connectivity
DIMENSIONS: mm		CHK: K. SAMMON 15JUN2017	
TOLERANCES UNLESS OTHERWISE SPECIFIED:		APVD: K. SAMMON 15JUN2017	NAME: CABLE ASSEMBLY, 100 OHM, PiR, 4 PAIR, 8 COLUMN, 20G, 2-2 WIRING, A-D
0 PLC ± 1 PLC ± 2 PLC ± 3 PLC ± 4 PLC ± ANGLES ±		PRODUCT SPEC	RESTRICTED TO
MATERIAL		APPLICATION SPEC	SIZE: A1
FINISH		WEIGHT	CAGE CODE: C=2320902
		Customer Drawing	SCALE: 2:1 SHEET 2 OF 2 REV 1