

General Description

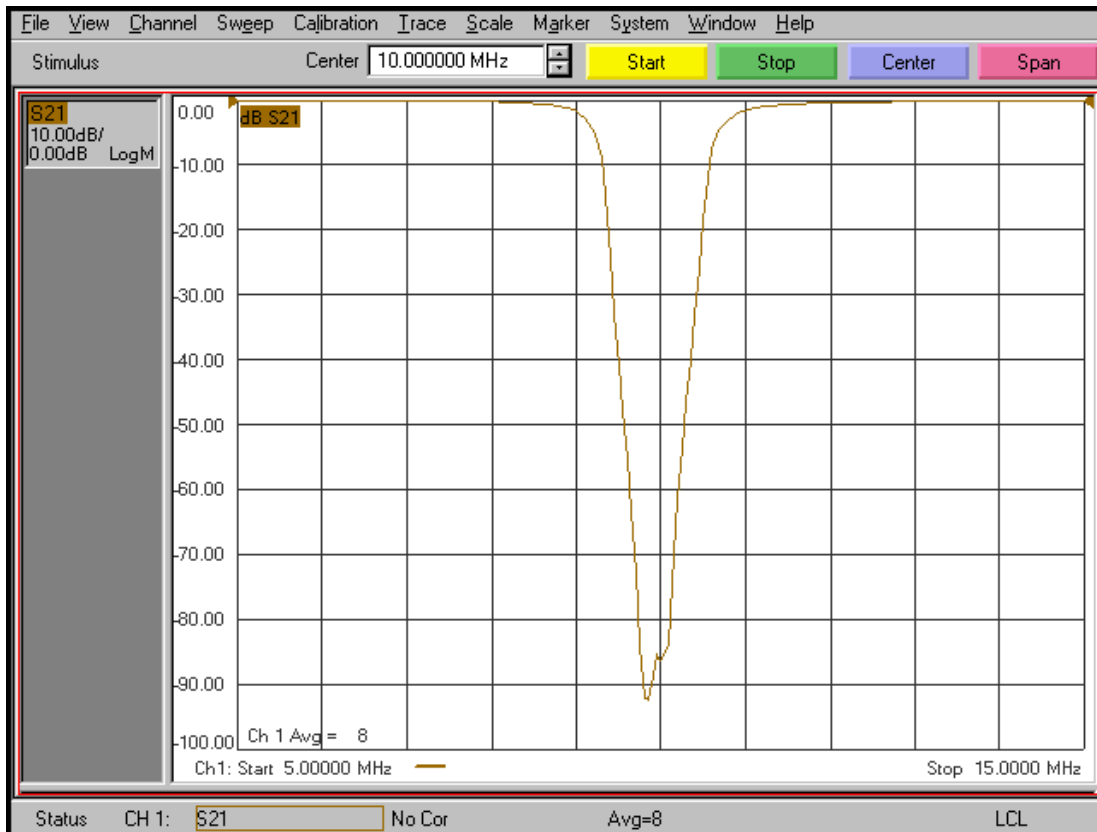
KR Electronics part number 3203 is a 10 MHz Bidirectional Absorptive Notch filter. The filter has a 1.25 dB bandwidth of 3 MHz max. Other notch frequencies and are bandwidths available. Please consult the factory.

Features

- 10 MHz Bidirectional Absorptive Notch
- Low VSWR even in Notch
- 1.66 MHz typical 3 dB Bandwidth
- High Notch Rejection
- 50 Ω Source and Load
- SMA Connectors

Typical Performance

Overall Response (5 dB/div)

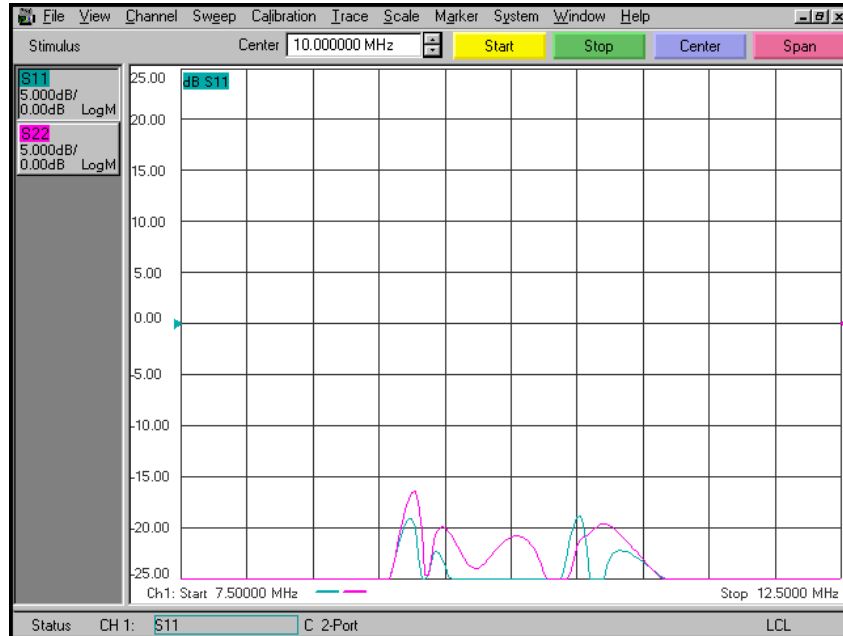


KR Electronics, Inc.
91 Avenel Street
Avenel, NJ 07001

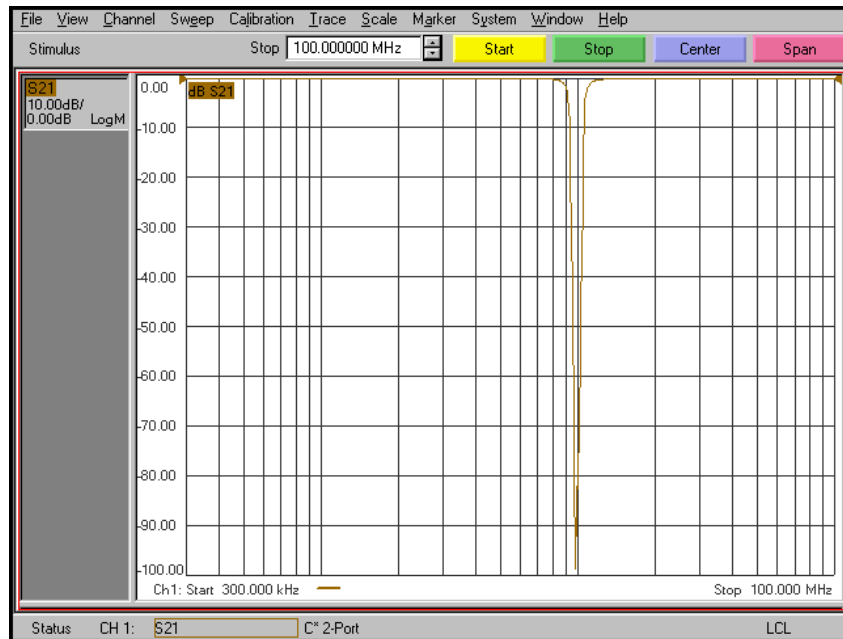
Web www.krfilters.com
Email sales@krfilters.com
Phone (732) 636-2500
Fax (732) 636-2582

Typical Performance

Return Loss (5 dB/div)



Overall Response (10 dB/div)



KR Electronics, Inc.
91 Avenel Street
Avenel, NJ 07001

Web
Email
Phone
Fax

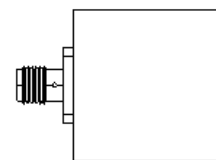
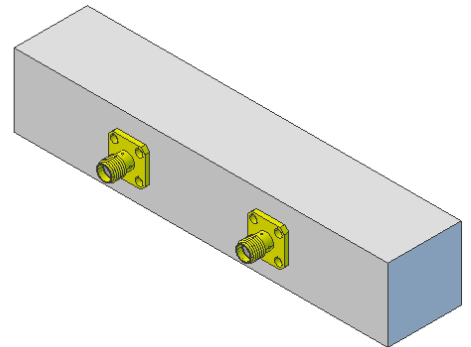
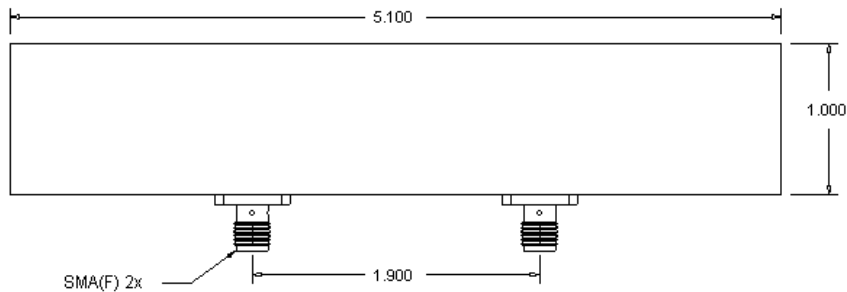
www.krfilters.com
sales@krfilters.com
(732) 636-2500
(732) 636-2582

KR Electronics 3203

Specifications

Parameter	Specification	Notes
Filter type	Bidirectional Absorptive Notch	
Notch Frequency	10 MHz	
Insertion Loss at 8.5 MHz & 11.5 MHz	1.25 dB max	0.6 dB typical
Insertion Loss at 9.85 to 10.15 MHz	45 dB min	> 70 dB typical
Input & Output Return Loss 9.85 to 10.15 MHz	12 dB min	20 dB typical
1 dB Bandwidth	2.4 MHz typical	
3 dB Bandwidth	1.66 MHz typical	Passband to 100 MHz min
40 dB Bandwidth	855 KHz typical	
50 dB Bandwidth	709 KHz typical	
60 dB Bandwidth	577 KHz typical	
Source and Load	50 Ω	

Physical Dimensions



Notes:

1. Dimensions in inches
2. Rectangular case

KR Electronics, Inc.
91 Avenel Street
Avenel, NJ 07001

Web www.krfilters.com
Email sales@krfilters.com
Phone (732) 636-2500
Fax (732) 636-2582