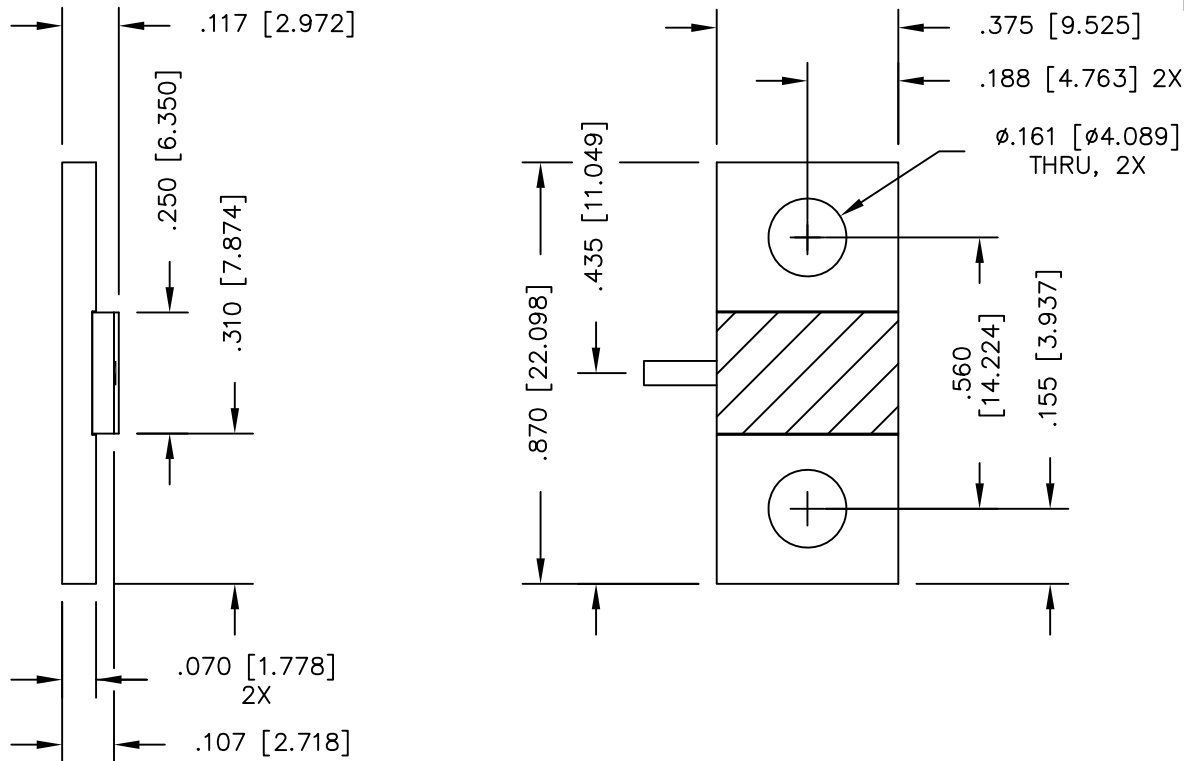


UNAUTHORIZED USE OF THIS  
DRAWING IS STRICTLY PROHIBITED

DAR	REV	DESCRIPTION	APPVD	DATE
2766	A	INITIAL RELEASE	TJD	10-10
3495	B	SEE DAR	DG	2-12



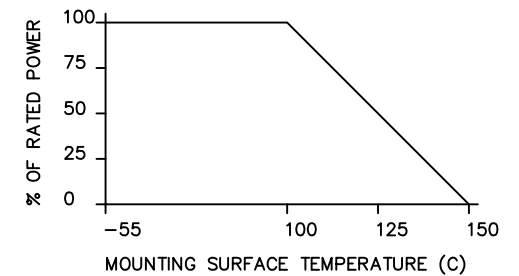
**NOTES:**

- LEAD MATERIAL: 99.99% PURE SILVER, .050 [1.270] WIDE x .005 [.127] THICK x .150 [3.810] MIN. LONG.
- SUBSTRATE MATERIAL: BeO
- FLANGE MATERIAL: COPPER PLATING: NICKEL
- LEAD(S) WELDED TO SUBSTRATE.

**ELECTRICAL SPECIFICATIONS**

PART NO.	VALUE	INPUT POWER	FRERQUENCY	VSWR
IPP-TB212E-50	50 OHMS ±5%	150 WATT	DC-3.5 GHz	<1.08:1 DC-2.7 GHz <1.25:1 DC-3.5 GHz
IPP-TB212E-100	100 OHMS ±5%	150 WATT	DC-2.0 GHz	2.0±0.2:1

POWER DERATING CURVE



MATERIAL	<b>2</b> <b>3</b>	DWN	DG	DATE	10-10	<b>Innovative Power Products</b>				
FINISH	<b>3</b>	ENG	TJD	DATE	10-10					
TOLERANCE		MANUF		DATE						
		CAGE CODE: 437R2			TITLE	TERMINATION, 150 WATT, FLANGE				
IN [MM]	.XX ±.02 [.50] .XXX ±.010 [.254]	SHEET	OF	SCALE		SIZE	P/N	IPP-TB212E-XXX	REV.	B
		1	1	4:1		B				