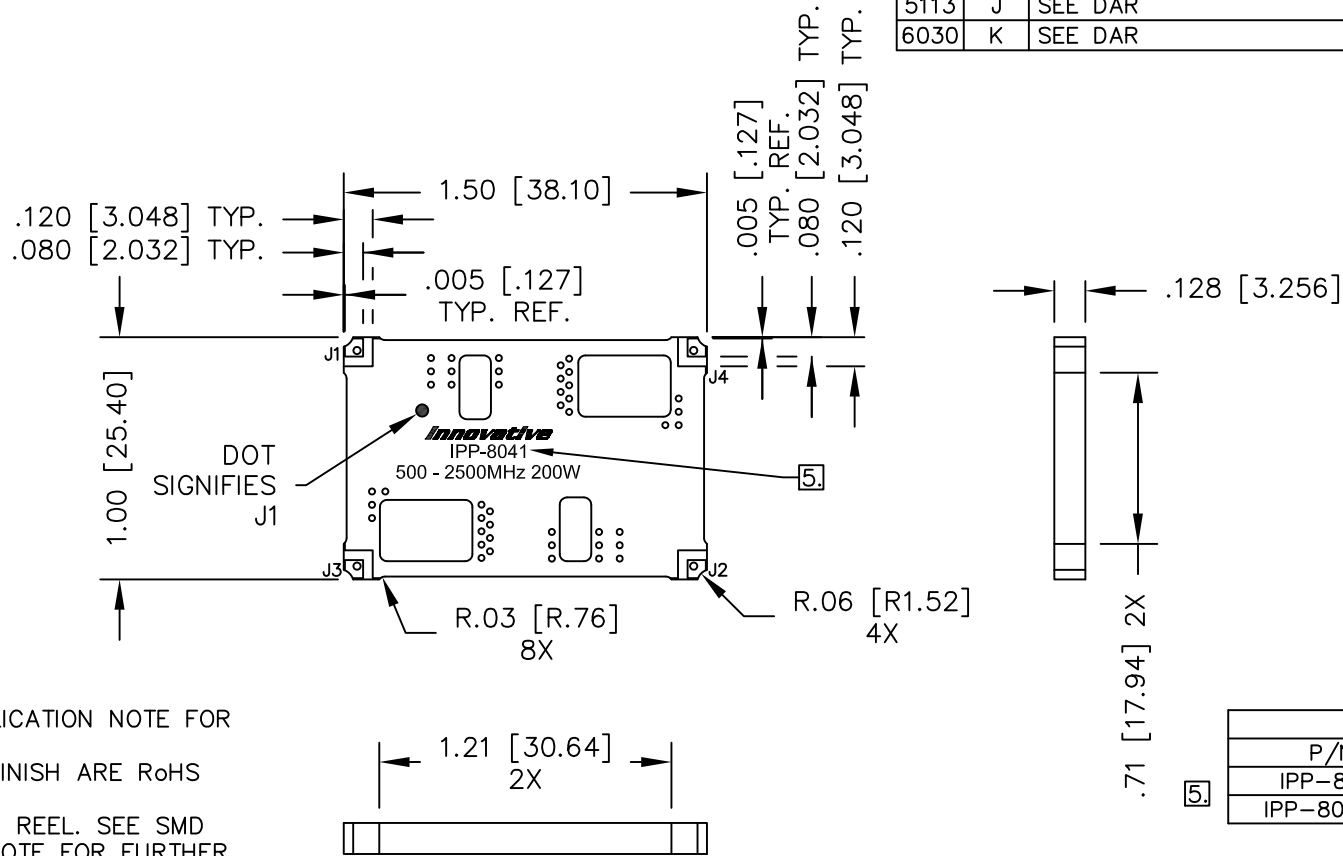


UNAUTHORIZED USE OF THIS  
DRAWING IS STRICTLY PROHIBITED

DAR	REV	DESCRIPTION	APPVD	DATE
4450	H	SEE DAR	DG	7-13
5113	J	SEE DAR	DG	8-14
6030	K	SEE DAR	DG	2-16



**NOTES:**

- SEE SMD COUPLER APPLICATION NOTE FOR FURTHER INFORMATION.
- PARTS WITH RoHS TIN FINISH ARE RoHS COMPLIANT.
- AVAILABLE IN TAPE AND REEL. SEE SMD COUPLER APPLICATION NOTE FOR FURTHER INFORMATION.
- DO NOT EXCEED 220°C WHEN INSTALLING COUPLER.
- SEE CHART FOR PART NUMBER AND FINISH.

**ELECTRICAL SPECIFICATIONS**

FREQUENCY:	500 – 2500 MHz.
INSERTION LOSS:	<0.25 dB
MAIN LINE VSWR:	<1.25:1
DIRECTIVITY:	>20dB
COUPLING:	36.0±1.0dB
COUPLED FLATNESS:	±0.75dB
POWER:	200 WATT
TEMPERATURE:	-55°C TO 85°C

FINISH	
P/N	TYPE
IPP-8041	TIN/LEAD
IPP-8041RT	RoHS MATTE TIN

PORT CONFIGURATION			
INPUT	OUTPUT	FORWARD COUPLED	REFLECTED COUPLED
J1	J2	J3	J4
J2	J1	J4	J3

MATERIAL	DWN DG	DATE 10-10	<b>Innovative Power Products</b>		
FINISH	ENG TJD	DATE 10-10			
SEE FINISH CHART	MANUF	DATE	TITLE OUTLINE		
TOLERANCE	CAGE CODE: 437R2		SMD COUPLER, DDC, 500 - 2500 MHz. 200W		
IN [MM]	SHEET OF	SCALE	SIZE	P/N	REV.
.XX ±.02 [.50] .XXX ±.010 [.254] ANG. ±1/2°	1 1	2:1	B	IPP-8041*	K