

## Han 10E-F-Screw Fe(Au)/Cu Ni Type J

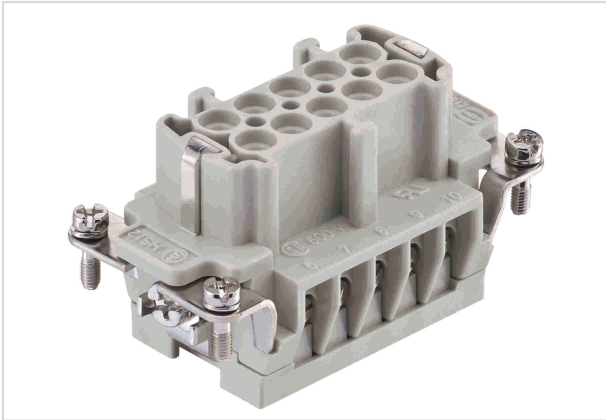


Image is for illustration purposes only. Please refer to product description.

Part number	09 33 010 2791
Specification	Han 10E-F-Screw Fe(Au)/Cu Ni Type J
HARTING eCatalogue	<a href="https://b2b.harting.com/09330102791">https://b2b.harting.com/09330102791</a>

### Identification

Category	Inserts
Series	Han <sup>®</sup> Thermocouple
Identification	Han E <sup>®</sup>

### Version

Termination method	Screw termination
Gender	Female
Size	10 B
With wire protection	Yes
Number of contacts	10
PE contact	Yes

### Technical characteristics

Conductor cross-section	1 ... 2.5 mm <sup>2</sup>
Rated current	16 A
Rated voltage	400 V
Rated impulse voltage	6 kV
Pollution degree	3
Insulation resistance	>10 <sup>10</sup> Ω
Tightening torque	0.5 Nm
Limiting temperature	-40 ... +125 °C
Mating cycles	≥500



Pushing Performance

## Material properties

Material (insert)	Polycarbonate (PC)
Colour (insert)	RAL 7032 (pebble grey)
Material flammability class acc. to UL 94	V-0
RoHS	compliant with exemption
RoHS exemptions	6(c): Copper alloy containing up to 4 % lead by weight
ELV status	compliant with exemption
China RoHS	50
REACH Annex XVII substances	No
REACH ANNEX XIV substances	No
REACH SVHC substances	Yes
REACH SVHC substances	Lead
ECHA SCIP number	5dbb3851-b94e-4e88-97a1-571845975242

## Specifications and approvals

Specifications	EN 60664-1 IEC 61984
Approvals	DNV GL

## Commercial data

Packaging size	1
Net weight	70.2 g
Country of origin	Germany
European customs tariff number	85366990
eCl@ss	27440205 Contact insert for industrial connectors