

Monolithic crystal filter

MQF21.4-1500/25



Application

- 8 pol filter
- i.f.- filter
- use in mobile and stationary transceivers

Limiting values

		Unit	Value
Center frequency	f_0	MHz	21.4
Insertion loss		dB	≤ 3.0
Pass band at 3.0 dB		kHz	± 7.50
Ripple in pass band	$f_0 \pm 6.00$ kHz	dB	≤ 2.0
Stop band attenuation	$f_0 \pm 17.5$ kHz	dB	≥ 65
	$f_0 \pm 25$ kHz	dB	> 90
Alternate attenuation	$f_0 \pm 25...500$ kHz	dB	> 90

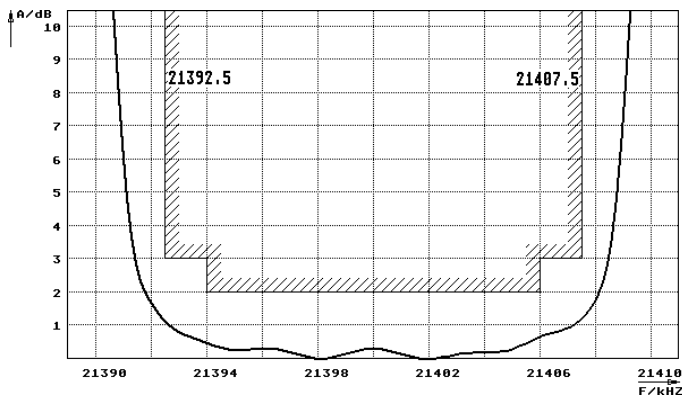
Terminating impedance Z

R1 C1	Ohm/pF	1500 2
R2 C2	Ohm/pF	1500 2

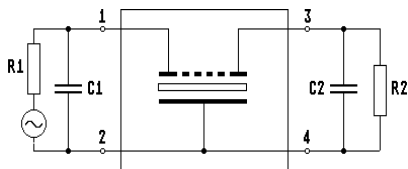
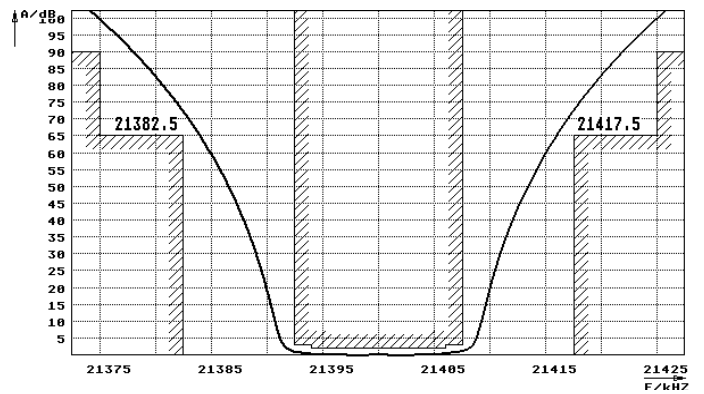
Operating temp. range	$^{\circ}\text{C}$	-25... +70
-----------------------	--------------------	------------

Characteristics MQF21.4-1500/25

Pass band



Stop band



Pin connections: 1 Input
2 Input-E
3 Output
4 Output-E

