
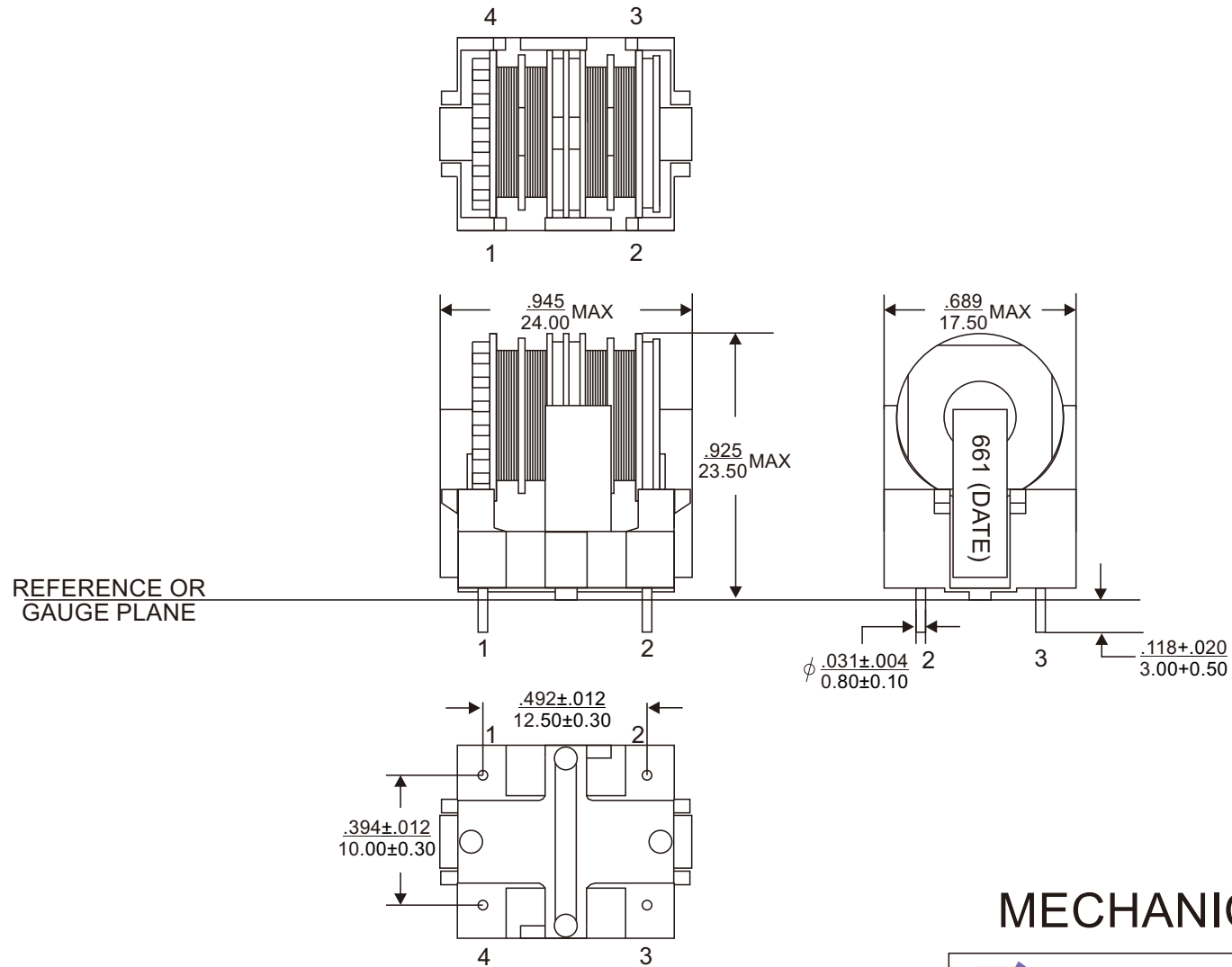


REVISIONS			
REV.	DESCRIPTION	ECN NO.	DATE
01	FIRST RELEASE FOR RFQ#A2014-13656	N/A	11/05/14

PAGE 4 IS FOR INTERNAL ONLY

PART NUMBER		PART DESCRIPTION		TITLE											
832-00661F		RoHS compliant per EU Directive 2011/65/EU(without exemption of solder content)		PCMC, UT20, 3.3mH, TH, 4 Pin											
<p align="center">WARNING !</p> <p>ALL SHEETS OF THIS DOCUMENT ARE CONTROLLED DOCUMENTATION AND ARE NOT TO BE RELEASED OUTSIDE OF E&E OR ITS SUB-CONTRACTORS WITHOUT AUTHORIZATION.</p>		UNLESS OTHERWISE SPECIFIED, DIMENSIONS ARE IN INCH/mm.		APPROVALS											
		<p align="center">TOLERANCE ARE:</p> <table border="0"> <tr> <td>INCH</td> <td>mm</td> <td>ANGLE</td> </tr> <tr> <td>.XXX ± .005</td> <td>.XX ± .13</td> <td>X.X ± 0.3</td> </tr> <tr> <td>.XX ± .02</td> <td>.X ± .5</td> <td>X. ± 1</td> </tr> </table>		INCH	mm	ANGLE	.XXX ± .005	.XX ± .13	X.X ± 0.3	.XX ± .02	.X ± .5	X. ± 1	DATE		 <p>E & E Magnetic Products Ltd.</p>
		INCH	mm	ANGLE											
		.XXX ± .005	.XX ± .13	X.X ± 0.3											
		.XX ± .02	.X ± .5	X. ± 1											
DRAWN BY		11/05/14		DRAWING NO./MODEL											
B.XU		11/05/14													
PROJ. ENG		11/05/14		REV											
S.HONG		11/05/14													
APPROVED BY		11/05/14		832-00661F											
J.YANG		11/05/14													
Q.A.		11/05/14		01											
				SCALE	PAGE 1 OF 4										
				DO NOT SCALE	1 4										



MECHANICAL OUTLINE



E & E Magnetic Products Ltd.

DRAWING NO./MODEL

832-00661F

REV

01

SCALE

DO NOT SCALE

PAGE

2

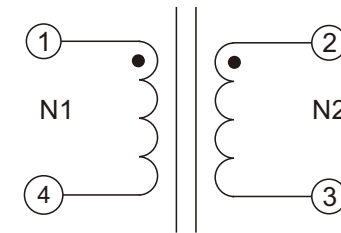
OF

4

1. Dimension are specified in $\frac{\text{inches}}{\text{mm}}$ with higher precedence in inches.
2. Unless otherwise specified, all tolerance are $\pm \frac{.010}{0.25}$.
3. "(DATE)" includes at least the manufacturing date code (in YYWW format) plus manufacturing site code.

ELECTRICAL SPECIFICATION @20°C:

PARAMETERS	UNIT	LIMITS
Turns Ratio(1-4):(2-3)	-	1 : 1 ± 3%
Polarity	-	Per Schematic
Ls(1-4),Ls(2-3)@0.1mA, 10kHz	mH	3.3 -30/+50%
LL(1-4), short (2-3)@5.0mA, 10kHz	uH	27 Typ
DCR(1-4),DCR(2-3)	mΩ	110 Typ
HIPOT(Winding):(Winding),@ 2 seconds, 2mA	Vac	1500



SCHEMATIC

4. Operating temperature range: -40°C to +100°C. The part temperature (ambient temperature + temperature rise) should not exceed the upper limit of the operating temperature under worst case operating conditions. Circuit design, component placement, PWB trace size and thickness, airflow and other cooling provisions all affect the part temperature. Part temperature should be verified in the end application.



E & E Magnetic Products Ltd.

DRAWING NO./MODEL

832-00661F

REV

01

SCALE

DO NOT SCALE

PAGE

3

OF

4