

Coaxial Frequency Mixer

ZMX-10G+

Level 7 (LO Power +7 dBm) 3700 to 10000 MHz

Maximum Ratings

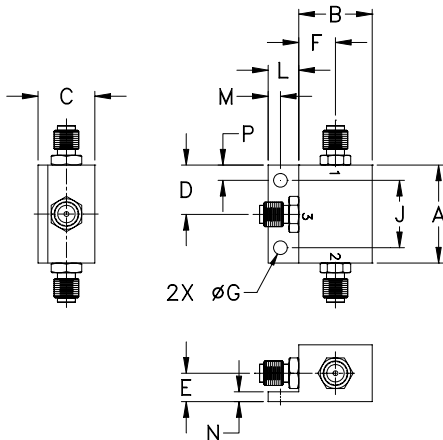
Operating Temperature	-55°C to 100°C
Storage Temperature	-55°C to 100°C
RF Power	50mW
IF Current	40mA

Permanent damage may occur if any of these limits are exceeded.

Coaxial Connections

LO	1
RF	2
IF	3

Outline Drawing



Outline Dimensions (inch/mm)

A	B	C	D	E	F	G	H	
1.00	.75	.58	.50	.29	.38	.140	--	
25.40	19.05	14.73	12.70	7.37	9.65	3.56	--	
J	K	L	M	N	P	wt		
.687	--	.32	.13	.10	.16	grams		
17.45	--	8.13	3.30	2.54	4.06	25.0		

Features

- wide frequency range, 3700 to 10000 MHz
- low conversion loss, 5.0 dB typ.
- high L-R isolation, 30 dB typ.

Applications

- SATCOM
- instrumentation
- defense & federal communications
- SHF



CASE STYLE: BU413

Connectors	Model	Price	Qty.
SMA	ZMX-10G+	\$81.95 ea.	(1-9)

+ RoHS compliant in accordance with EU Directive (2002/95/EC)

The +Suffix has been added in order to identify RoHS Compliance. See our web site for RoHS Compliance methodologies and qualifications.

Electrical Specifications

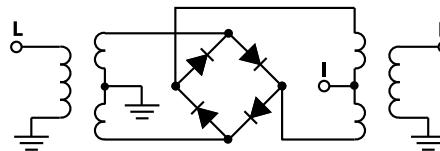
FREQUENCY (MHz)	CONVERSION LOSS (dB)	LO-RF ISOLATION (dB)		LO-IF ISOLATION (dB)		
		Typ.	Min.	Typ.	Min.	
3700-10000	DC-2000	5.0	0.10	8.5	30 20*	17 8

1 dB COMP.: +1 dBm typ.
* 15 dB min. 8.5 to 10 GHz

Typical Performance Data

Frequency (MHz)	Conversion Loss (dB)	Isolation L-R (dB)	Isolation L-I (dB)	VSWR RF Port (:1)	VSWR LO Port (:1)	
						LO +7dBm
3700.00	3730.00	4.99	34.57	12.28	2.40	2.93
4000.00	4030.00	5.05	33.76	12.98	2.46	2.46
4337.97	4367.97	5.02	44.41	13.90	2.44	2.41
4656.96	4686.96	4.95	36.62	14.49	2.49	2.51
5000.00	4970.00	4.44	38.22	15.80	2.54	2.28
5374.68	5344.68	4.33	39.47	16.96	2.52	2.24
5773.42	5743.42	4.40	38.75	17.25	2.48	3.01
6000.00	5970.00	4.84	35.07	17.16	2.47	3.36
6411.39	6381.39	4.43	33.08	16.34	2.51	1.98
6810.13	6780.13	4.65	31.52	16.66	2.42	3.09
7000.00	6970.00	4.76	31.02	17.09	2.26	2.73
7448.10	7418.10	4.94	26.55	17.02	1.77	1.14
7846.84	7816.84	5.62	24.43	17.82	1.41	1.83
8000.00	7970.00	5.63	24.81	19.24	1.46	2.20
8325.32	8295.32	5.54	25.45	23.21	1.74	2.61
8724.05	8694.05	5.72	24.75	26.18	2.32	2.04
9000.00	8970.00	5.63	24.10	27.42	2.90	2.73
9282.28	9252.28	5.53	22.97	27.93	3.61	3.95
9681.01	9651.01	6.49	20.82	28.97	4.53	3.36
10000.00	9970.00	7.60	19.42	31.29	5.06	3.46

Electrical Schematic



Mini-Circuits®
ISO 9001 ISO 14001 AS 9100 CERTIFIED

P.O. Box 350166, Brooklyn, New York 11235-0003 (718) 934-4500 Fax (718) 332-4661 The Design Engineers Search Engine www.minicircuits.com Provides ACTUAL Data Instantly at [minicircuits.com](http://www.minicircuits.com)

IF/RF MICROWAVE COMPONENTS

For detailed performance specs & shopping online see web site

Notes: 1. Performance and quality attributes and conditions not expressly stated in this specification sheet are intended to be excluded and do not form a part of this specification sheet. 2. Electrical specifications and performance data contained herein are based on Mini-Circuit's applicable established test performance criteria and measurement instructions. 3. The parts covered by this specification sheet are subject to Mini-Circuit's standard limited warranty and terms and conditions (collectively, "Standard Terms"); Purchasers of this part are entitled to the rights and benefits contained therein. For a full statement of the Standard Terms and the exclusive rights and remedies thereunder, please visit Mini-Circuit's website at www.minicircuits.com/MCLStore/terms.jsp.

REV. B
M113397
ZMX-10G+
ED-3937/1
DJ/TD/CP/AM
081106
Page 1 of 2

