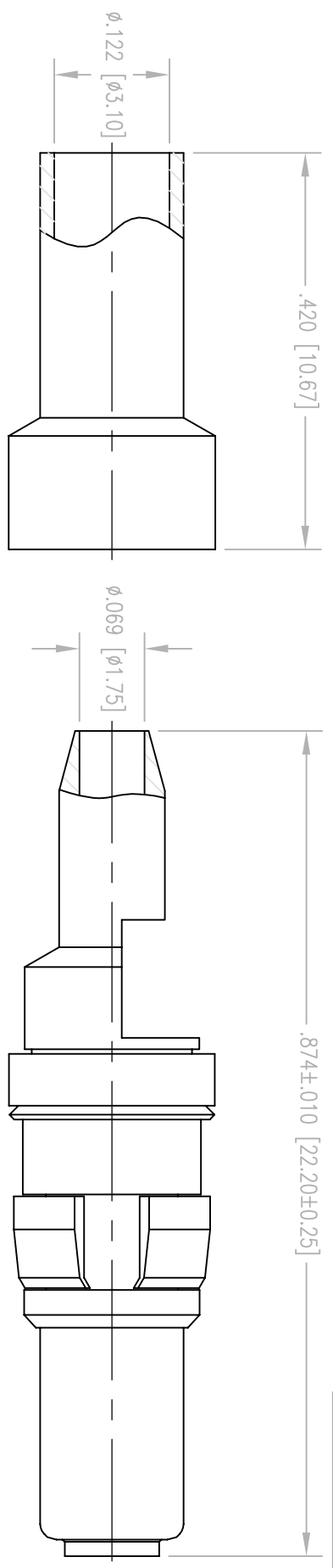
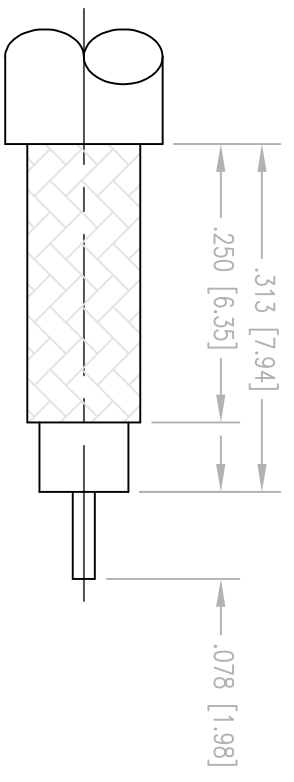
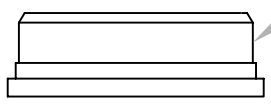


REV.	DESCRIPTION	DATE	BY	APPD.
B	ECR 7206	2/6/02	M.F.	



STABILIZING BUSHING
SHIPPED LOOSE



CABLE TRIMMING DIMENSIONS

NOTES:

1. MATERIALS:

- BODIES: BRASS PER ASTM B16
- CONTACT: COPPER ALLOY
- CLIP RING: BERYLLIUM COPPER PER ASTM B194
- INSULATOR: TEFLON PER ASTM D1710
- SPRING WASHER: PHOSPHOR BRONZE PER B103
- STABILIZING BUSHING: DELRIN

2. FINISH:

- BODIES AND CONTACT: .000030 MIN. GOLD PER MIL-G-45204 OVER .000050 MIN. NICKEL PER QQ-N-290
- FERRULE AND SPRING WASHER: .000005 MIN. GOLD PER MIL-G-45204 OVER .000050 MIN. NICKEL PER QQ-N-290
- CLIP RING: .000100 MIN. NICKEL PER QQ-N-290 OVER COPPER FLASH

3. ELECTRICAL:

- VSWR: 1.35 MAX.
- FREQUENCY RANGE: 0 - 1500 MHZ
- DIELECTRIC WITHSTANDING VOLTAGE: 1000 VRMS.
- FOR USE WITH RG-316 CABLE OR EQUIVALENT.
- RECOMMENDED DIE: .128 HEX.
- FOR CABLING PROCEDURES SEE 9-01 WITH TRIMMING DIMENSIONS SHOWN.

PER ASME Y14.5M-1994 UNLESS OTHERWISE SPECIFIED: TOLERANCES ARE IN INCHES (MM)			
DIMENSIONS: XX ± .01 [0.254] DIMENSIONS: XXX ± .005 [0.127] ANGLES: ± Z°			
SCALE: 6:1		TITLE	
CUSTOMER DRAWING		Winchester Electronics 400 Park Road Watertown, CT 06795	
DRAWN KJT	DATE 9/15/98	CHECKED PJP	DATE 9/15/98
APPROVED JMC	DATE 9/15/98	APPROVED JMC	DATE 9/15/98
A	210-910-0632G	SMT. 1 OF 1	REV. B