

## Han 16EMC/B-HBM-DL

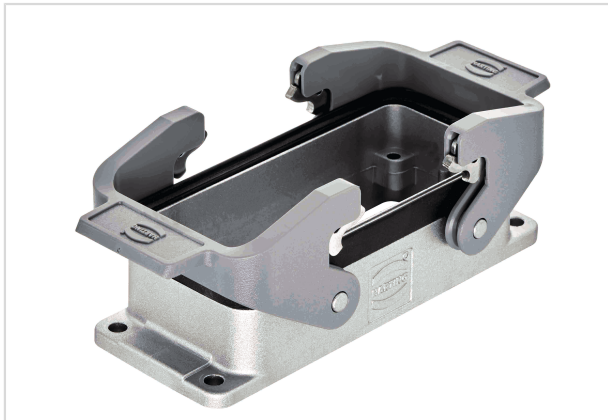


Image is for illustration purposes only. Please refer to product description.

Part number	09 62 816 2301
Specification	Han 16EMC/B-HBM-DL
HARTING eCatalogue	<a href="https://b2b.harting.com/09628162301">https://b2b.harting.com/09628162301</a>

### Identification

Category	Hoods/Housings
Series of hoods/housings	Han <sup>®</sup> EMC/B
Type of hood/housing	Bulkhead mounted housing
Description of hood/housing	External seal
Type	Low construction

### Version

Locking type	Double locking lever
Han-Easy Lock <sup>®</sup>	Yes
Size	16 B
Field of application	Hoods/Housings for higher EMC requirements

### Technical characteristics

Limiting temperature	-40 ... +125 °C
Degree of protection acc. to IEC 60529	IP66
Type rating acc. to UL 50 / UL 50E	4 12

### Material properties

Material (hood/housing)	Aluminium die-cast
Surface (hood/housing)	Uncoated
Colour (hood/housing)	Unpainted
Material (seal)	NBR



Pushing Performance

## Material properties

Material (locking)	Polycarbonate (PC) Stainless steel
Colour (locking)	RAL 7037 (dust grey)
Material flammability class acc. to UL 94 (locking levers)	V-0

## Specifications and approvals

Approvals	DNV GL
UL / CSA	UL 1977 ECBT2.E235076 CSA-C22.2 No. 182.3 ECBT8.E235076
CE	Yes

## Commercial data

Packaging size	1
Net weight	0.01 g
Country of origin	China
European customs tariff number	85389099
eCl@ss	27440202 Shell for industrial connectors