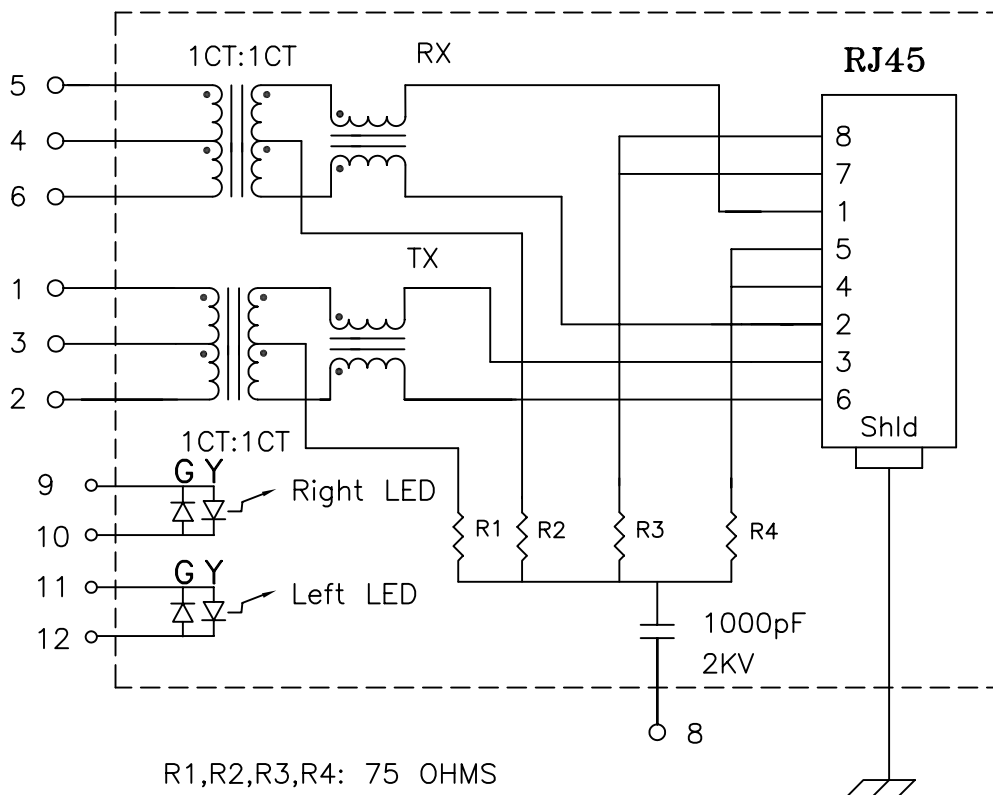


**Schematic:**

(One of Four)



**Electrical Specifications: @25°C**

- Isolation Voltage: 1500 Vrms (Input to Output)
- Isolation Voltage: 500 Vrms (P1+2+3 to P4+5+6)
- Turns Ratio: TX 1CT:1CT ±3% RX 1CT:1CT ±3%
- CABLE SIDE OCL: 350uH Minimum @100KHz 100mV 8mADC
- Cw/w: 27pF Typical @100KHz 100mV
- Insertion Loss (300KHz-100MHz): -1.0dB Minimum
- Return Loss: @30MHz -18dB Minimum
- @80MHz -12dB Minimum
- Differential to Common Mode Rejection:
  - 45dB Min @1-60MHz
  - 35dB Min @60-200MHz

**Notes:**

1. Solderability: Leads shall meet MIL-STD-202, Method 208D for solderability.
  2. Flammability: UL94V-0
  3. ASTM oxygen index: > 28%
  4. Insulation System: Class F 155°C. UL file E151556
  5. Operating Temperature Range: All listed parameters are to be within tolerance from -40°C to +85°C
  6. Storage Temperature Range: -55°C to +125°C
  7. Aqueous wash compatible
- DOC REV: A/3

<b>XFMRs Inc.</b>	Title: <b>FOUR PORT COMBO</b>			
UNLESS OTHERWISE SPECIFIED	P/N: XFATM9K-CLNN4-4MS	REV. A		
TOLERANCES: .xxx ±0.010	DWN.	罗振江	Mar-26-04	
Dimensions in Inch	CHK.	廖玉坤	Mar-26-04	
SHEET 1 OF 2	APP.	MS	Mar-26-04	

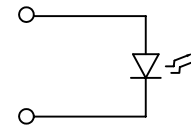
# Mechanical Dimensions: (FOR CLxu4-4MS)

Complete the Combo P/N as follows:

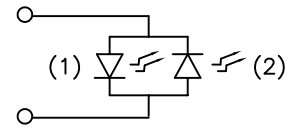
Replace 'x' & 'u' in the part number with one of the LED color letters:

- Y=Yellow
  - G=Green
  - A=Amber
  - R=Red
  - C=Green(1)/Amber(2) Bicolor
  - D=Amber(1)/Green(2) Bicolor
  - M=Green(1)/Yellow(2) Bicolor
  - N=Yellow(1)/Green(2) Bicolor
  - P=Red(1)/Green(2) Bicolor
  - Q=Green(1)/Red(2) Bicolor
- 'x' = Left LED Color  
'u' = Right LED Color

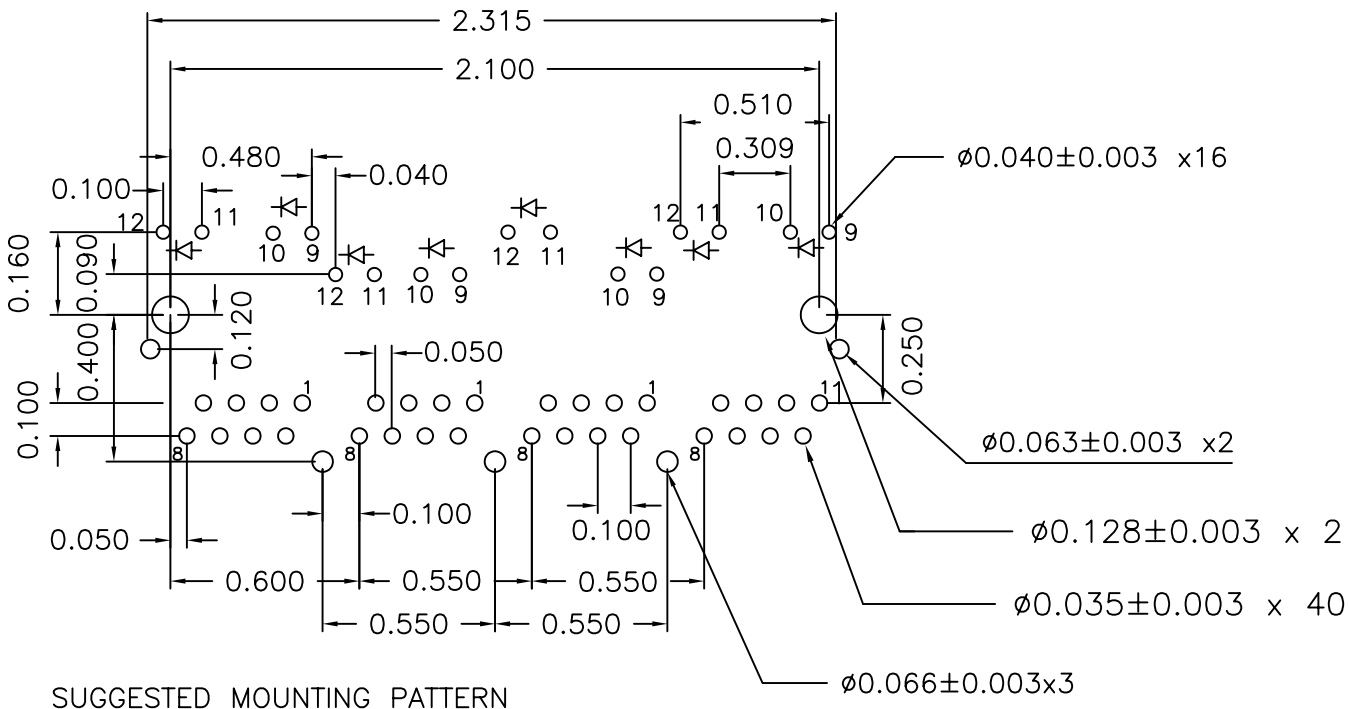
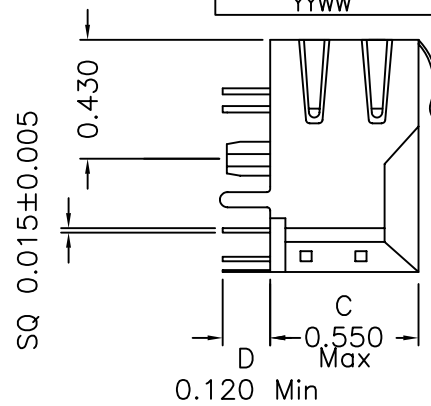
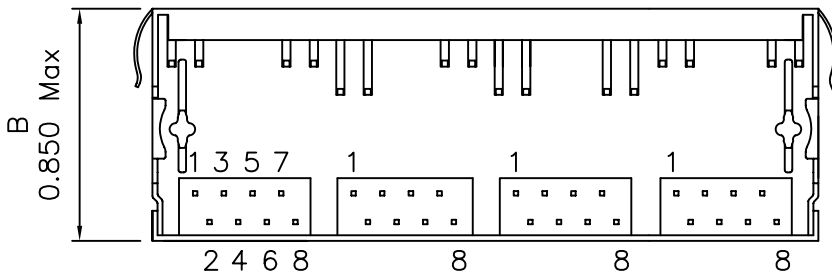
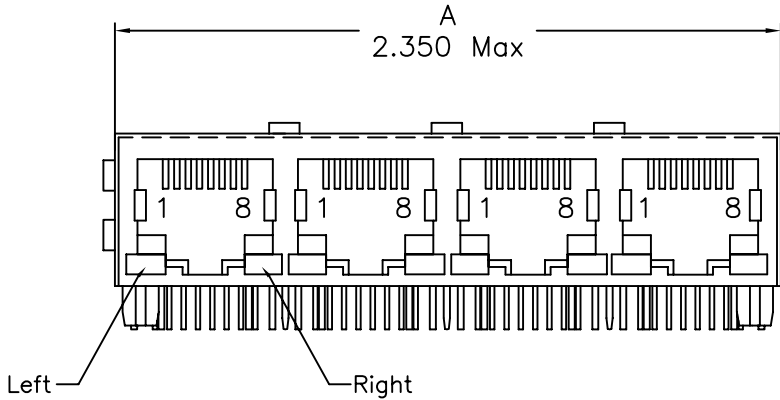
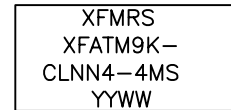
Single Color LED:



Bi-Color LED:



Marking on top:



SUGGESTED MOUNTING PATTERN

DOC REV: A/3

**XFMRs Inc.**

Title: **FOUR PORT COMBO w/ LED's**

UNLESS OTHERWISE SPECIFIED  
TOLERANCES:  
.xxx ±0.010  
Dimensions in Inch

P/N: XFATM9K-CLNN4-4MS

REV. A

DWN.

罗振江

Mar-26-04

CHK.

廖玉坤

Mar-26-04

APP.

MS

Mar-26-04

**PROPRIETARY:**

Document is the property of XFMRs Group & is not allowed to be duplicated without authorization.

SHEET 2 OF 2