

**PLEASE CHECK WWW.MOLEX.COM FOR LATEST PART INFORMATION**

**Part Number:** [0496231295](#)  
**Status:** **Active**  
**Description:** 4.20mm (.165") Wire-to-Wire TPA™ Connector for Male Housing, 12 Circuits, UL94V-0, Ivory

**Documents:**

[Drawing \(PDF\)](#) [RoHS Certificate of Compliance \(PDF\)](#)  
[Product Specification PS-49623-001 \(PDF\)](#)

**Agency Certification**

UL E29179

**General**

Product Family Crimp Housings  
 Series [49623](#)  
 Product Name N/A

**Physical**

Circuits (maximum) 12  
 Circuits Detail 12  
 Color - Resin Ivory  
 Flammability 94V-0  
 Gender Male  
 Glow-Wire Compliant No  
 Keying to Mating Part None  
 Lock to Mating Part Yes  
 Material - Resin Nylon  
 Number of Rows 2  
 Packaging Type Bag  
 Panel Mount Yes  
 Pitch - Mating Interface (in) 0.165 In  
 Pitch - Mating Interface (mm) 4.20 mm  
 Polarized to Mating Part Yes  
 Stackable No  
 Temperature Range - Operating -40°C to +105°C

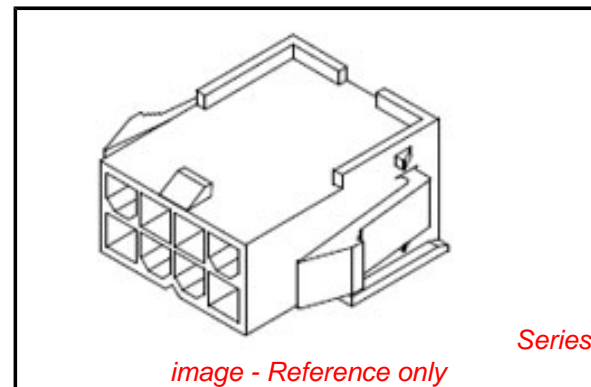
**Electrical**

Current - Maximum per Contact 6A

**Material Info**

**Reference - Drawing Numbers**

Product Specification PS-49623-001  
 Sales Drawing SD-49623-001



*image - Reference only*

**EU RoHS**

**ELV and RoHS Compliant**  
**REACH SVHC**  
**Contains SVHC: No**  
**Halogen-Free Status**

**China RoHS**



**Need more information on product environmental compliance?**

Email [productcompliance@molex.com](mailto:productcompliance@molex.com)  
 For a multiple part number RoHS Certificate of Compliance, [click here](#)

Please visit the [Contact Us](#) section for any non-product compliance questions.

**Search Parts in this Series**

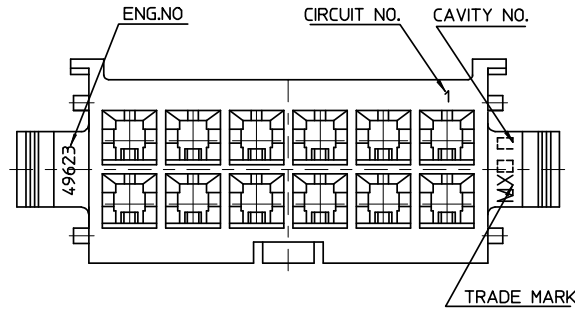
[49623Series](#)

**Mates With**

4.20mm (.165") Wire-to-Wire Female TPA™  
[49624](#) , [49625](#) , [49626](#)

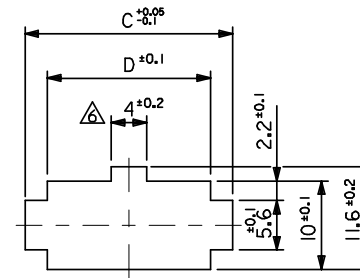
**Use With**

[5558](#) Mini-Fit® Crimp Terminal

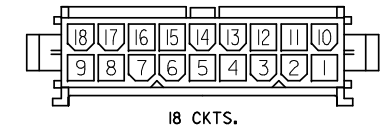
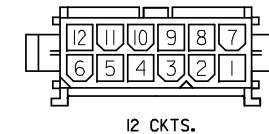
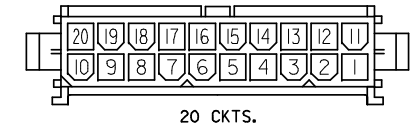
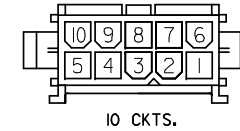
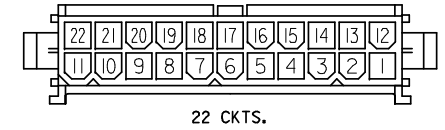
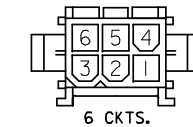
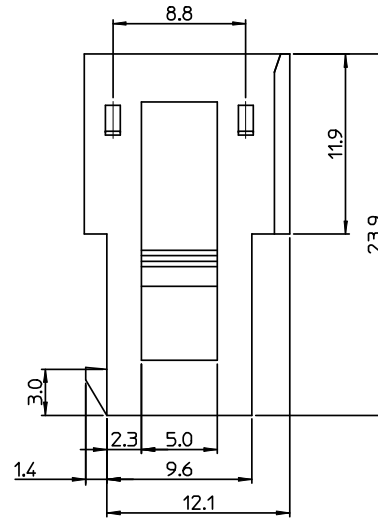
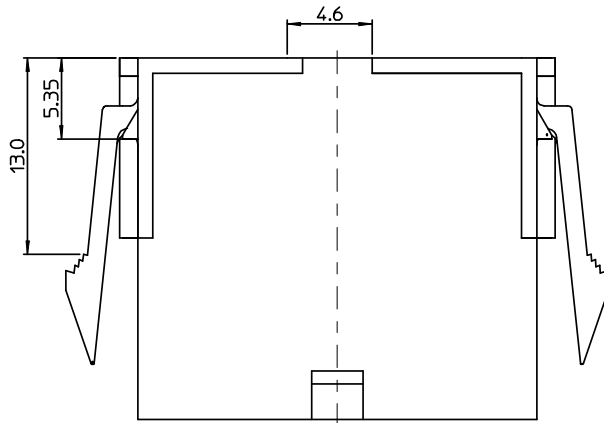
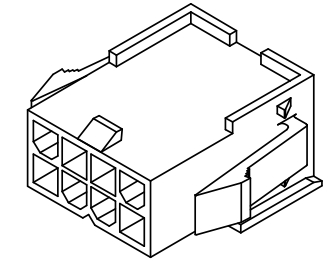


**NOTES**

- MATERIAL :
  - POLYAMID(PA66), UL94V-2, COLOR OF NATURAL
  - POLYAMID(PA66), UL94V-0, COLOR OF IVORY
- APPLICABLE TERMINAL · SERIES 5558 T2A, 5558 T
- MATE WITH : SERIES 49624, 49625, 49626
- PRODUCT SPECIFICATION · PS-49623-001
- PACKAGE SPECIFICATION : PK-49623-001
- PANEL HOLE TO BE PUNCHED OUT IN THE SAME DIRECTION AS INSERTION INTO THE PANEL



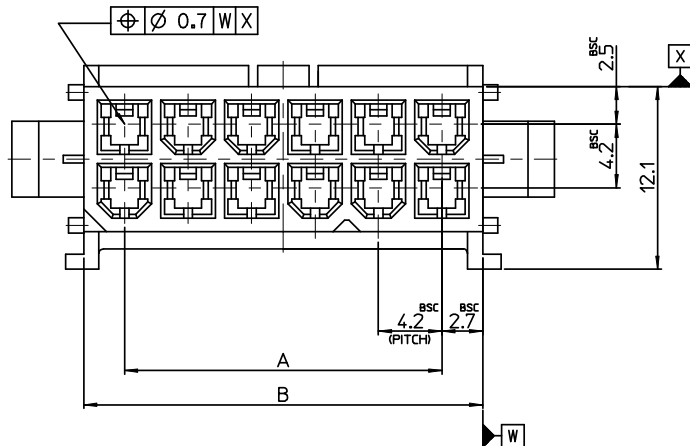
**RECOMMENDED PANEL HOLE DIMENSION**  
(THICKNESS : 0.8-2.0mm)



**CIRCUIT SIZE LAYOUT**

**TABLE-1**

49623-2295	496232295	49623-2290	496232290	22
49623-2095	496232095	49623-2090	496232090	20
49623-1895	496231895	49623-1890	496231890	18
49623-1295	496231295	49623-1290	496231290	12
49623-1095	496231095	49623-1090	496231090	10
49623-0695	496230695	49623-0690	496230690	06
ENG NO.	MATERIAL NO.	ENG NO.	MATERIAL NO.	CIRCUIT SIZE
POLYAMID(PA66), UL94V-0		POLYAMID(PA66), UL94V-2		



47.8	52.6	47.4	42	22
43.6	48.6	43.2	37.8	20
39.4	44.4	39	33.6	18
26.8	31.8	26.4	21	12
22.6	27.6	22.2	16.8	10
14.2	19.2	13.8	8.4	6
D	C	B	A	CIRCUIT

RELEASED	EC NO: KOR2008-0134	2008/02/27
DRWN:SKHAN01	CHKD:WY YANG	2008/02/29
APPR:YUNSIKKIM		2008/02/29
A	DESCRIPTION	REV

QUALITY SYMBOLS	GENERAL TOLERANCES (UNLESS SPECIFIED)
▽=0	mm INCH
▽=0	4 PLACES ± --- ± ---
	3 PLACES ± --- ± ---
	2 PLACES ± 0.3 ± ---
	1 PLACE ± 0.3 ± ---
	ANGULAR ± 3 °
	DRAFT WHERE APPLICABLE MUST REMAIN WITHIN DIMENSIONS

DIMENSION STYLE	
MM ONLY	
DRAWN BY	DATE
SK. HAN	2008/01/28
CHECKED BY	DATE
WY. YANG	2008/01/28
APPROVED BY	DATE
EH. JUNG	2008/01/28
MATERIAL NO.	
SEE TABLE	
SIZE	A2

SCALE	DESIGN UNITS	THIRD ANGLE PROJECTION
4:1	METRIC	
TITLE		
4.2MM W/W TPA CONN. FOR MALE HOUSING		
MATERIAL NO.		SHEET NO.
SD-49623-001		1 OF 1
THIS DRAWING CONTAINS INFORMATION THAT IS PROPRIETARY TO MOLEX INCORPORATED AND SHOULD NOT BE USED WITHOUT WRITTEN PERMISSION		