

# Voltage Controlled Crystal Oscillator

## CVXO-014S & 014 Models 8 & 14 Pin Dip, 5V, HCMOS/TTL

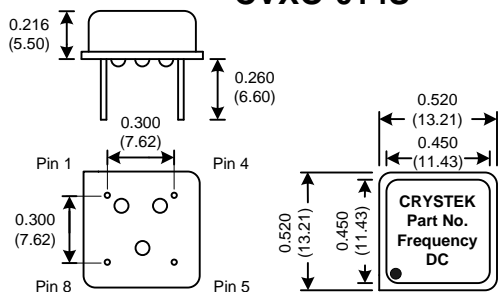
<b>Frequency Range:</b>	1MHz to 200MHz
<b>Frequency Stability:</b>	±20ppm to ±100ppm
<b>Temperature Range:</b>	See Table 1
<b>Storage:</b>	-45°C to 90°C
<b>Input Voltage:</b>	5V ±0.5V
<b>Control Voltage:</b>	2.5V ±2.0V
<b>Input Current:</b>	100mA Max @ 200MHz
<b>Output:</b>	HCMOS/TTL
<b>Symmetry:</b>	40/60% Max @ 50% Vdd
(Option Y)	45/55% Max
<b>Rise/Fall Time:</b>	4ns Typ, 10ns Max
<b>Control Range:</b>	See Table 2
	(50ppm Min, 150ppm Max Std.)
<b>Output Voltage:</b>	"0" = 10% Vdd Max
	"1" = 90% Vdd Min
<b>Load:</b>	15pF/10TTL Max
<b>Linearity:</b>	±10% Max
<b>Aging:</b>	<3ppm 1st/yr, 1ppm every year thereafter



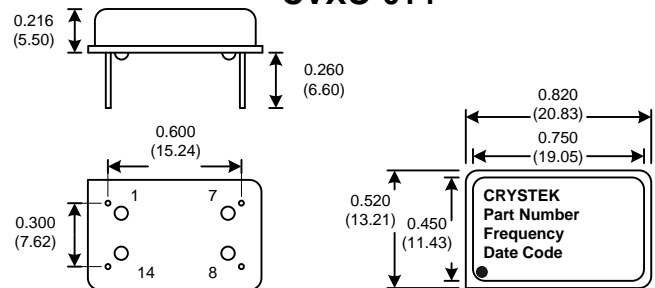
Designed to meet today's requirements for economical solutions.

**\*\*Custom Designs Available**

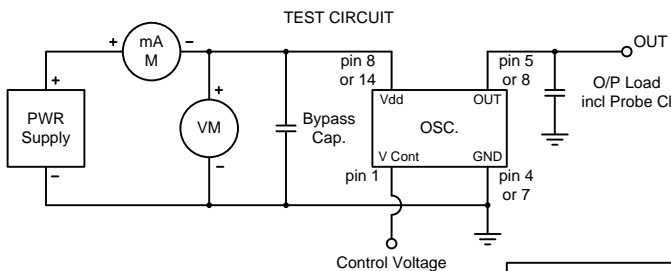
### CVXO-014S



### CVXO-014



Dimensions inches (mm)  
All dimensions are Max unless otherwise specified.



CONTROL RANGE OPTIONS	
A	20ppm Typ, 30ppm Max
B	30ppm Min
C	50ppm Min
D	100ppm Min
E	150ppm Min
F	200ppm Min
G	(STD) 50ppm Min, 150ppm Max
H	150ppm Min, 250ppm Max
I	200ppm Min, 300ppm Max

Operating Temperature	Freq. Stability (± ppm)			
	20	25	50	100
A 0°C to 50°C	20	25	50	100
B -10°C to 60°C	20	25	50	100
C 0°C to 70°C	20	25	50	100
D -10°C to 70°C	20	25	50	100
E -20°C to 70°C		25	50	100
F -30°C to 60°C		25	50	100
G -40°C to 85°C		25	50	100

Table 1

Table 2

### Crystek Part Number Guide for 8 pin

CVXO-014S - A A Y - 25 - 44.768

#1	#2	#3	#4	#5	#6	#7
#1 Crystek VCXO	#2 Model	#3 Temp. Range: (see table 1)	#4 Control Range: (see table 2)	#5 Symmetry: (Blank = 40/60, Y=45/55)	#6 Stability: (see table 1, Blank = 100ppm)	#7 Frequency in MHz: 3 or 6 decimal places

Example:  
CVXO-014SAAY-25-25.000 = 5.0V VCXO, 0/50°C, ±30ppm Max Pull, 45/55, 25ppm, 25.000 MHz  
CVXO-014SED-19.660 = 5.0V VCXO, -20/70, ±100ppm Min Pull, 40/60, 100ppm, 19.660 MHz

### Crystek Part Number Guide for 14 pin

CVXO-014 - A A Y - 25 - 44.768

#1	#2	#3	#4	#5	#6	#7
#1 Crystek VCXO	#2 Model	#3 Temp. Range: (see table 1)	#4 Control Range: (see table 2)	#5 Symmetry: (Blank = 40/60, Y=45/55)	#6 Stability: (see table 1, Blank = 100ppm)	#7 Frequency in MHz: 3 or 6 decimal places

Example:  
CVXO-014AAAY-25-25.000 = 5.0V VCXO, 0/50°C, ±30ppm Max Pull, 45/55, 25ppm, 25.000 MHz  
CVXO-014ED-19.660 = 5.0V VCXO, -20/70, ±100ppm Min Pull, 40/60, 100ppm, 19.660 MHz

TD-02077 Rev.E

Specifications subject to change without notice.