

PLEASE CHECK WWW.MOLEX.COM FOR LATEST PART INFORMATION

Part Number: [0008650805](#)
Status: **Active**
Overview: [kk](#)
Description: KK® Cat Ear Crimp Terminal 41572, Bag Tin (Sn)

Documents:

[Drawing \(PDF\)](#) [RoHS Certificate of Compliance \(PDF\)](#)

General

Product Family Crimp Terminals
 Series [41572](#)
 Crimp Quality Equipment Yes
 Overview [kk](#)
 Product Name Cat Ear, KK®

Physical

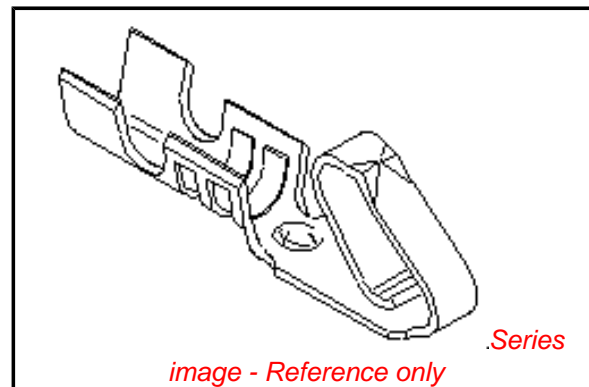
Gender Female
 Material - Metal Phosphor Bronze
 Material - Plating Mating Tin
 Material - Plating Termination Tin
 Packaging Type Bag
 Plating min: Mating (µin) 100
 Plating min: Mating (µm) 2.50
 Plating min: Termination (µin) 100
 Plating min: Termination (µm) 2.50
 Termination Interface: Style Crimp or Compression
 Wire Insulation Diameter 1.57mm (.062") max.
 Wire Size AWG 22, 24, 26, 28, 30
 Wire Size mm² N/A

Material Info

Old Part Number 41572-A(P909)L

Reference - Drawing Numbers

Packaging Specification PK-2759-001
 Product Specification RPS-7478-001
 Sales Drawing SD-41572



EU RoHS

ELV and RoHS Compliant
REACH SVHC Contains SVHC: No
Halogen-Free Status

China RoHS



Need more information on product environmental compliance?

Email productcompliance@molex.com
 For a multiple part number RoHS Certificate of Compliance, [click here](#)

Please visit the [Contact Us](#) section for any non-product compliance questions.

Search Parts in this Series

[41572Series](#)

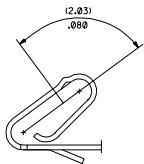
Application Tooling | [FAQ](#)

Tooling specifications and manuals are found by selecting the products below. Crimp Height Specifications are then contained in the Application Tooling Specification document.

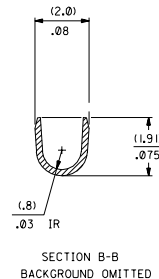
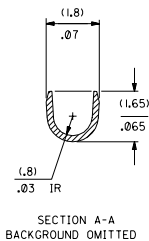
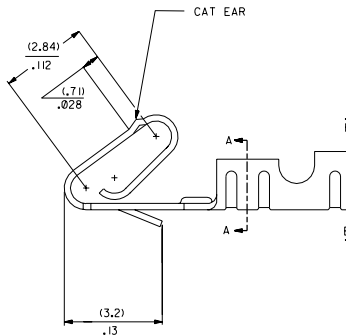
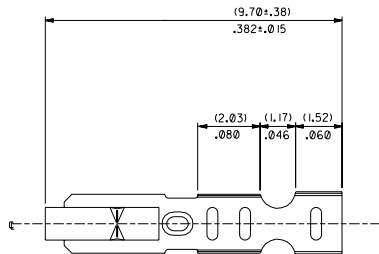
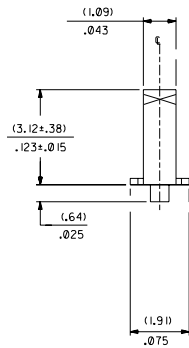
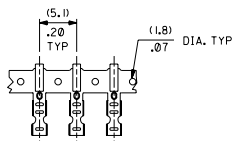
Global

Description	Product #
Extraction Tool	0011030022
Insertion Tool	0638120000
Hand Crimp Tool	0638118200

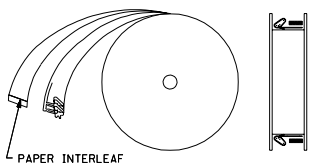
SELECT GOLD LOCATION



CARRIER VIEW



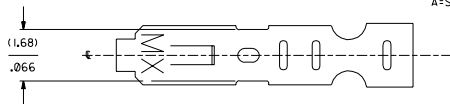
WINDING DETAIL B



- NOTES:
1. CRIMP IS FOR 22-30 GA WIRE, WITH .062 DIA INSULATION MAX.
 2. INSERTION FORCE OF TERMINAL INTO .100 & CONNECTOR IS 2.5 LBS. MAX
 3. TERMINALS MUST RETAIN 8 LBS PULL FOR 1 MIN. IN KK .100 & HOUSING.
 4. PARTS CONFORM TO PS-10-07
 5. MATERIAL: .0080+.0004 THICK PHOS BRONZE ALLOY 510
 6. DIMENSIONS GIVEN ACROSS CENTERLINES ARE SYMMETRICAL ABOUT THOSE CENTERLINES WITHIN HALF THE TOTAL TOLERANCE.

41572-*(***)*

MATERIAL L=LOOSE
A=SEE NOTE 5 FORM
L=LOOSE
BLANK=CHAIN PER DETAIL A



PLATING

PER SDES-88

*P909) OVERALL HOT TIN DTP: .00254 MICROMETERS MIN

(550) SELECT GOLD: .00038 MICROMETERS MIN.

OVERALL GOLD FLASH: .00005 MICROMETERS MIN.

OVERALL NICKEL UNDERPLATE: .00076 MICROMETERS MIN.

(555) SELECT GOLD: .00038 MICROMETERS MIN.

OVERALL NICKEL UNDERPLATE: .00076 MICROMETERS MIN.

*THE PRIMARY SHIPPING CARTON WILL BE LABELED 'COMPLIANT TO RoHS DIRECTIVE 2002/95/EC AND ELV ANNEX II) OF DIRECTIVE 2000/53/EC.' CARTONS WITHOUT THIS LABEL MAY CONTAIN PRODUCT WITH TIN-LEAD PLATING.

PART NO.	ENG NO.
08-65-0804	41572-A(P909)
08-65-0805	41572-A(P909)L
	41572-A(555)
	41572-A(555)L
	41572-A(550)
	41572-A(550)L

D	CHG P913 TO P909 10/2004-181 415-SM SCHAFER
C	ADD TO CAD ECR U30423 3-19-93 SAMIEC

DIMENSIONS SHOWN METRIC INCH		MFG	SH	REV.	LTR.	REVISIONS
UNLESS OTHERWISE SPECIFIED DIMENSIONS ARE IN INCHES						
TITLE		REVISE ONLY ON CAD SYSTEM				
CRIMP TERMINAL 22-30 GA WIRE						
SAME AS 6459 EXCEPT CAT EAR						
MOLEX INCORPORATED		SHEET NO. DATE				
MOLEX INC. 6000 N. W. 10TH AVENUE, MIAMI, FL 33157		1 OF 1 3/19/93				
PART NO. 0805		DRAWING NO. SD-41572				
DRAWN BY: SAMIEC		DATE: 10/2004				
CHECKED BY: LENZ		SCALE: 1:1				
APP'D: LENZ		MATERIAL: 541572X1				