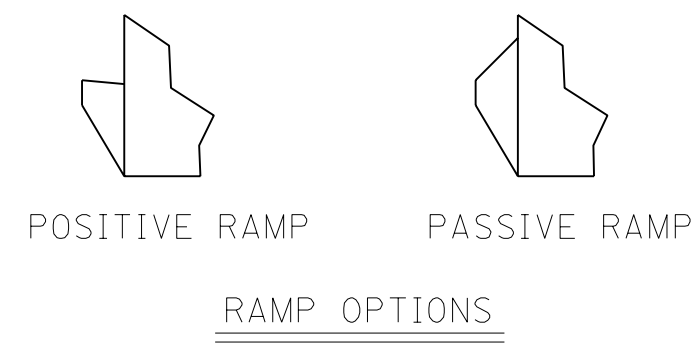
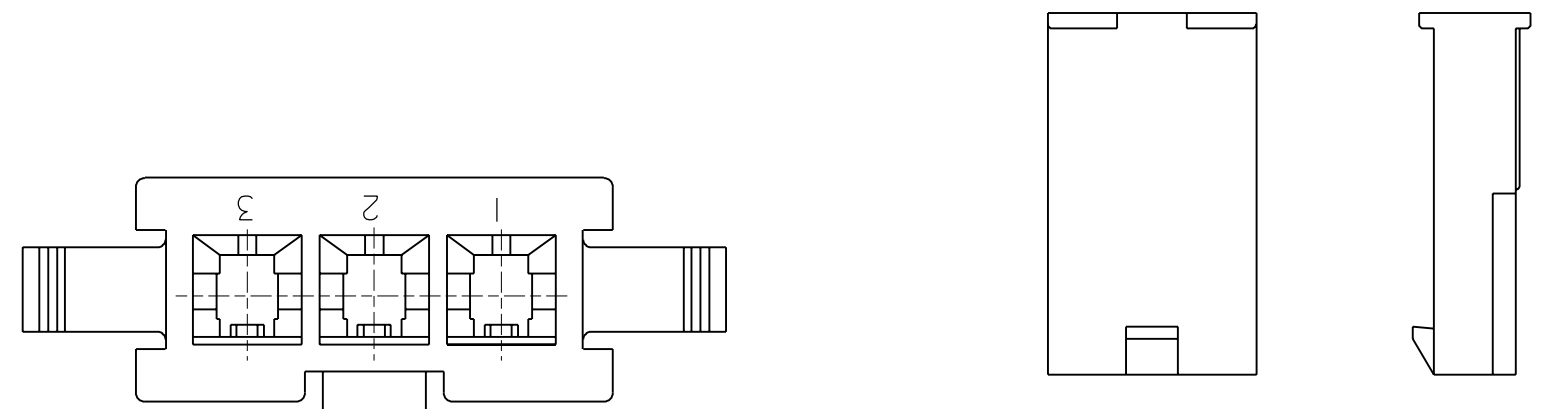
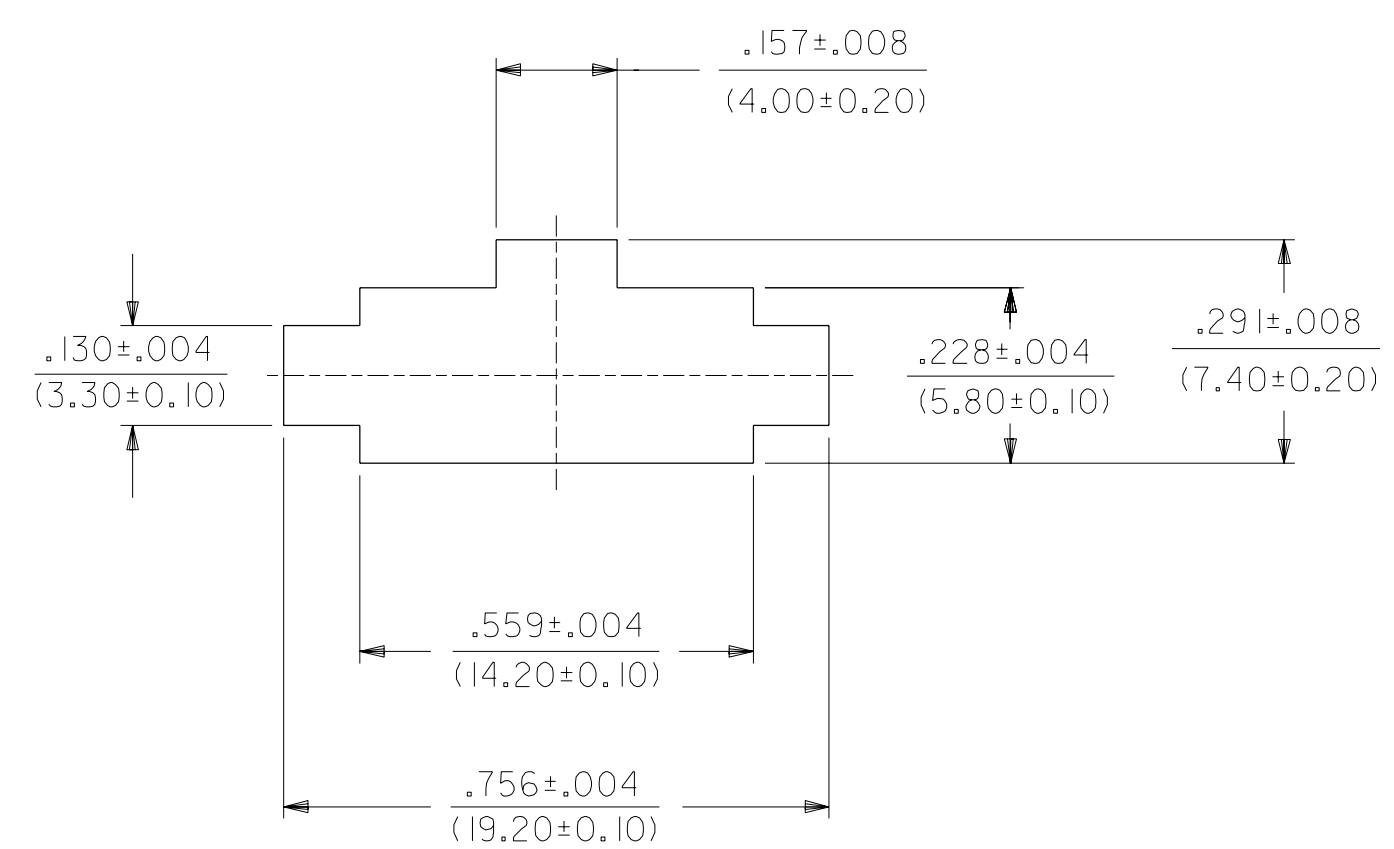
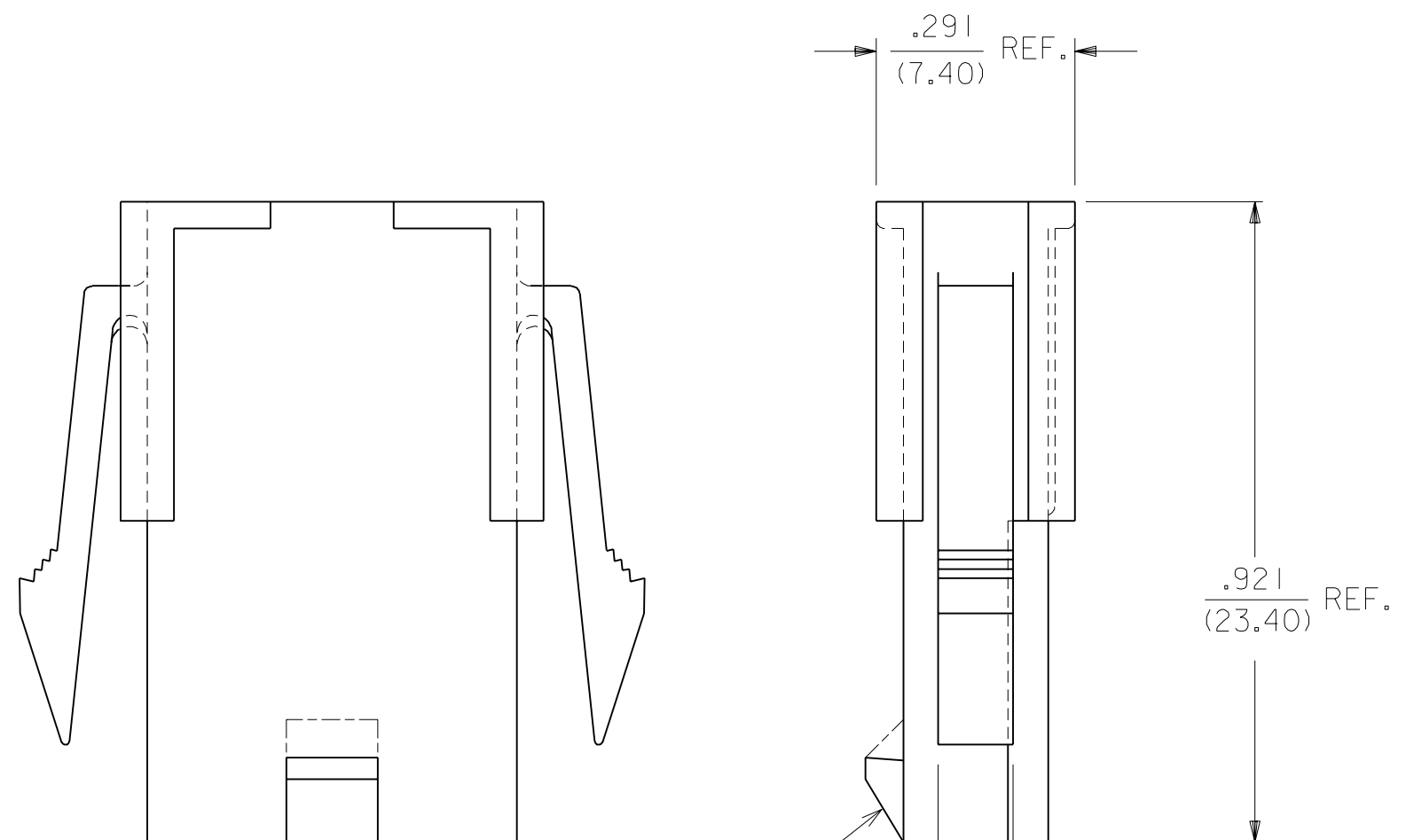


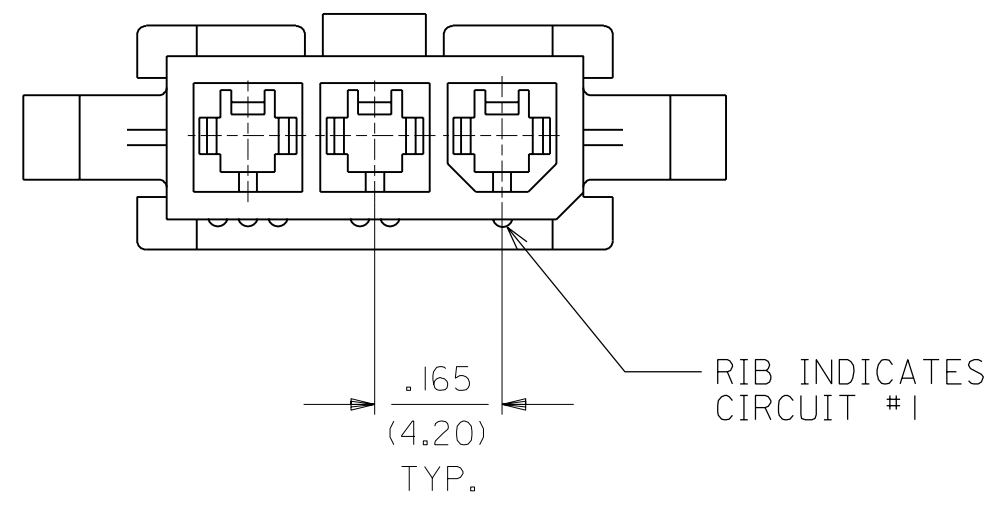
PART NO.	ENG. NO.	CKT. NO.	MOUNT OPTION	MAT'L.	RAMP OPTION
39-01-4032	5559-03P2	3	2	BLANK	POSITIVE
39-01-4033	5559-03P2-210	3	2	210	POSITIVE
39-01-4036	5559-03P3	3	3	BLANK	POSITIVE
39-01-4037	5559-03P3-210	3	3	210	POSITIVE
39-01-6030	5559-03P2-BL	3	2	BL	POSITIVE
39-01-6031	5559-03P3-BL	3	3	BL	POSITIVE
50-29-0088	5559-03P4	3	4	BLANK	PASSIVE
50-29-0089	5559-03P5	3	5	BLANK	PASSIVE
50-29-0091	5559-03P4-210	3	4	210	PASSIVE
50-29-0092	5559-03P5-210	3	5	210	PASSIVE
50-29-0093	5559-03P4-BL	3	4	BL	PASSIVE
50-29-0094	5559-03P5-BL	3	5	BL	PASSIVE



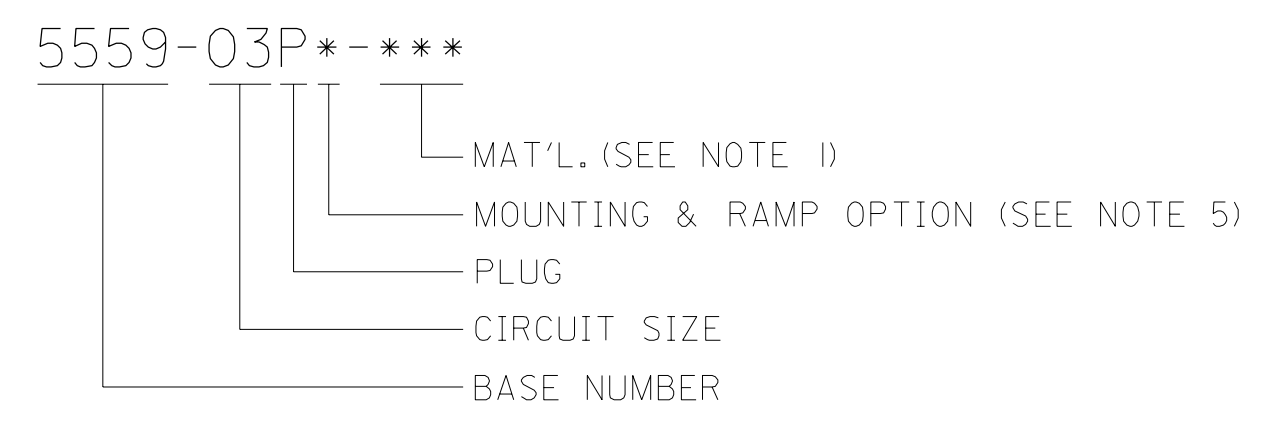
5559-03P3-\*\*\*  
WITHOUT MOUNTING EARS



RECOMMENDED PANEL CUT-OUT  
(SEE NOTES 7 & 8)



LEGEND



- NOTES:
- MATERIAL; BLANK=NYLON 6/6, UL 94V-2, COLOR: NATURAL.  
210=NYLON 6/6, UL 94V-0, COLOR: NATURAL.  
BL=NYLON 6/6, UL 94V-2, COLOR: DYED BLACK.
  - THIS PART IS FOR USE WITH MOLEX MALE TERMINAL NO. 5558-\*
  - THIS PART MATES WITH RECEPTACLE NO 5557.
  - PART IS DESIGNED IN METRIC.
  - MOUNTING & RAMP OPTION: 2 = WITH EARS, WITH POSITIVE RAMP  
3 = WITHOUT EARS, WITH POSITIVE RAMP  
4 = WITH EARS, WITH PASSIVE RAMP  
5 = WITHOUT EARS, WITH PASSIVE RAMP
  - PRODUCT SPECIFICATION: PS-5556-001
  - PANEL MOUNT VERSION IS FOR USE WITH .031/.079/(0.80/2.00) THICK PANELS.
  - PANEL SHOULD BE PUNCHED IN THE DIRECTION OF CONNECTOR INSERTION.

REV.	DESCRIPTION
I	DELETED 225 MAT'L. ECN #UCP2005-0704 CSTEWARD,09-30-04
HI	-03P3-225 WAS-03P2-225 UCP2004-2627 CSTEWARD,06-29-04
H	ADD 225 MAT'L. UCP2004-2482 6-14-04 SCHAFFER
G	ADD PASSIVE RAMP UCP2003-1642 1-29-2003 POLGAR
F	REV PS NOTE UCP2003-0396 9/3/2002 SAMIEC
EI	ADDED PART NO'S. ECN #U60052 95-07-18 A.GUZIK
E	ADDED NOTES 7&8 ECN #U50196 94-09-12 A.GUZIK
D	REV. DRAWING PER ECN U40402 GEP 3-24-94
C	REDRAWN ON CAD ECR U00510 GEP 7-30-90 RJF

DIMENSIONS SHOWN (METRIC) INCH		▽ = 0 ▼ = 0		REVISE ONLY ON CAD SYSTEM	
UNLESS OTHERWISE SPECIFIED TOLERANCES: ANGULAR ± 1/2°					
		INCH		METRIC	
3 PLACE	± .010	---		---	
2 PLACE	± .015	± 0.25		---	
1 PLACE	---	± 0.38		---	
DRAFT WHERE APPLICABLE MUST REMAIN WITHIN DIMENSIONS					
DRWG. BY: GEP	CHK'D. BY: RJF	FILE NAME: S5559P3X1 DGN		SCALE: 4 : 1	
Molex		MOLEX INCORPORATED		SHEET NO. 1 OF 1 DATE 7/11/90	
PART NO. SD-5559-03P*		DRWG. NO.		DIV. CP	
THIS DRAWING CONTAINS INFORMATION THAT IS PROPRIETARY TO MOLEX INC. AND SHOULD NOT BE USED WITHOUT WRITTEN PERMISSION.					

