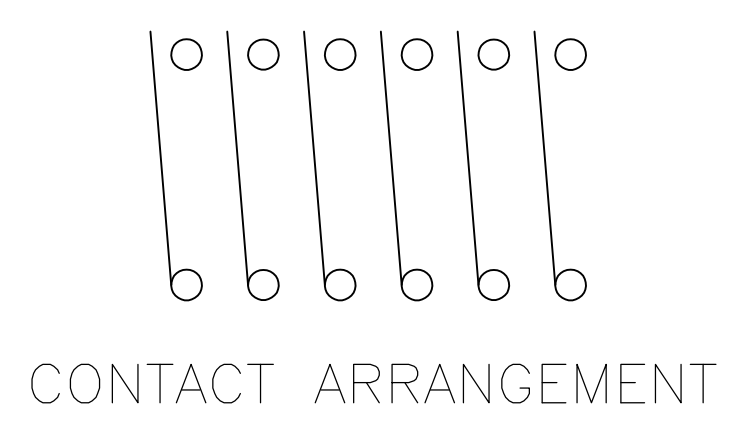
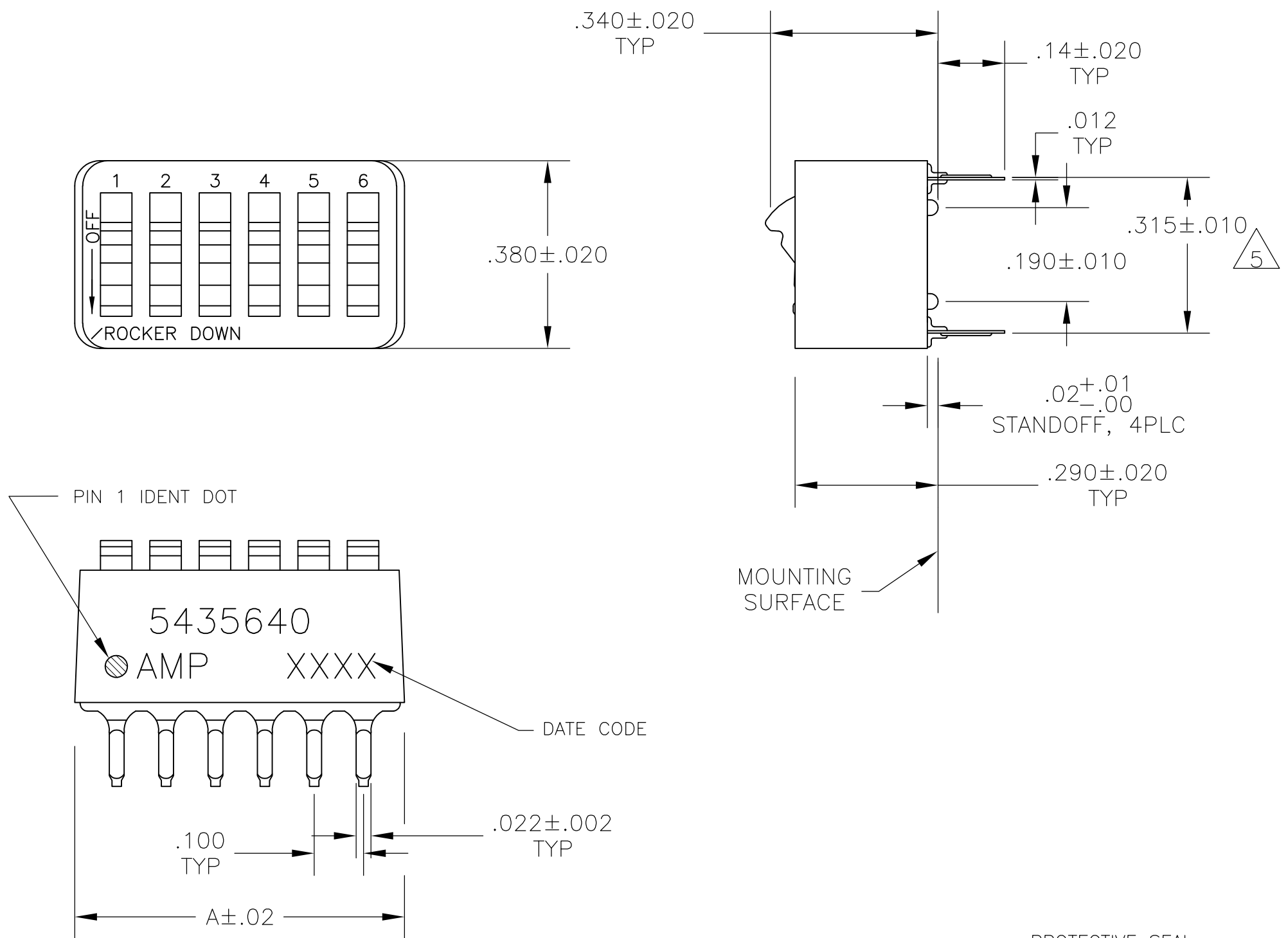


LOC		DIST		REVISIONS			
P	LTR	DESCRIPTION	DATE	DMN	APVD		
B		REVISED PER ECO-08-006299	27MAR08	HMR	MS		
B1		REVISED PER ECO-10-000444	19JAN10	KK	HMR		



- 1 FOR ADDITIONAL SPECIFICATIONS SEE AMP PRODUCT SPEC 108-7532.
 - 2 SWITCH SHOWN IN OPEN POSITION.
 - 3 ALL CHARACTERS AND ROCKERS ARE WHITE, HOUSING IS BLUE.
 - 4 STAMPING WILL VARY ON 2 AND 3 POSITION SIDES DUE TO SPACE RESTRICTIONS.
 - 5 .315 DIMENSION APPLIES AT TERMINAL TIPS. TERMINALS ARE .300+.010 -.000 AT MOUNTING SURFACE.
 - 6 STRIPPABLE TRANSPARENT SEAL, SEE FIG 1.
 - 7 STRIPPABLE TRANSPARENT SEAL, SEE FIG 1.
 - 8 MATERIAL: HOUSING & ROCKERS- POLYESTER CONTACTS & SOLDER LEAD-COPPER ALLOY
 - 9 FINISH: CONTACTS- GOLD OVER NICKEL SOLDER LEAD- TIN OVER NICKEL
 - 10 ALL MATERIALS AND FINISHES SHALL COMPLY WITH EU DIRECTIVE 2002 /95/EC OF 27JAN2003(ROHS).
- 11 OBSOLETE PARTS: OBSOLETE CIS STREAMLINING PER D.RENAUD/D.SINISI

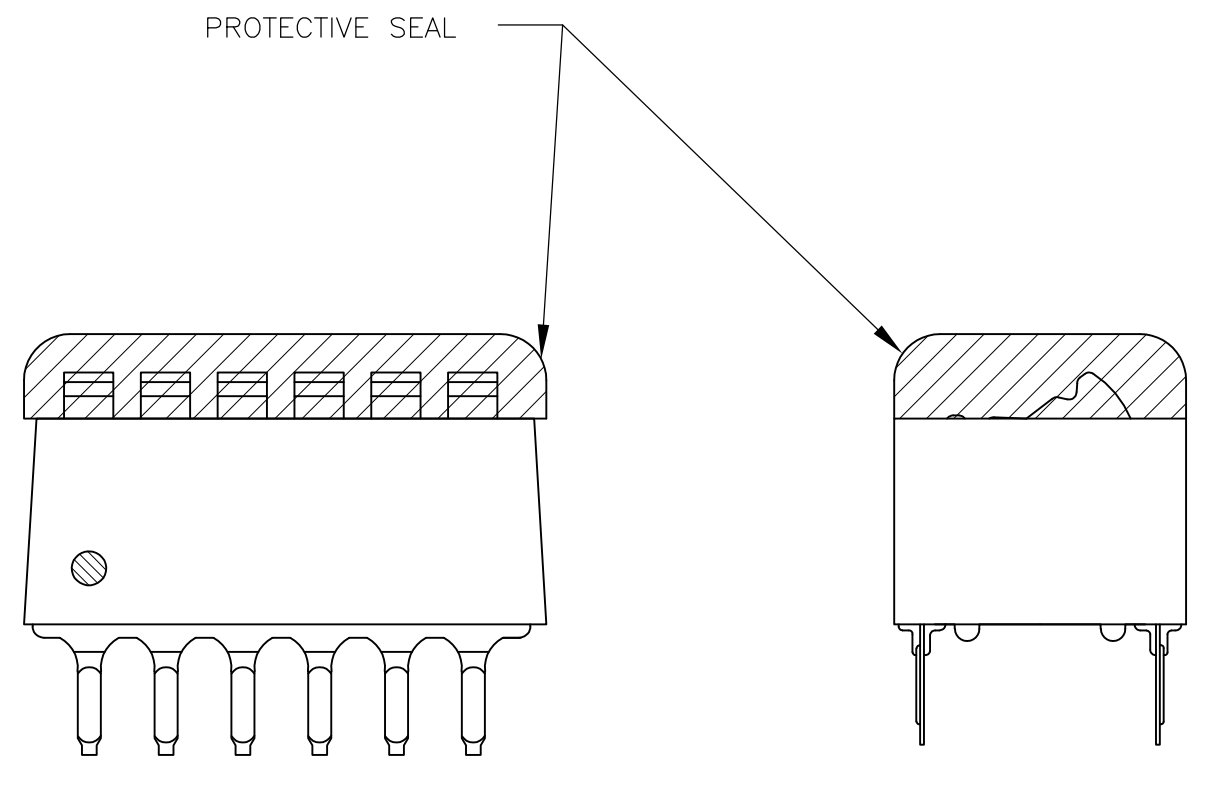


FIG 1

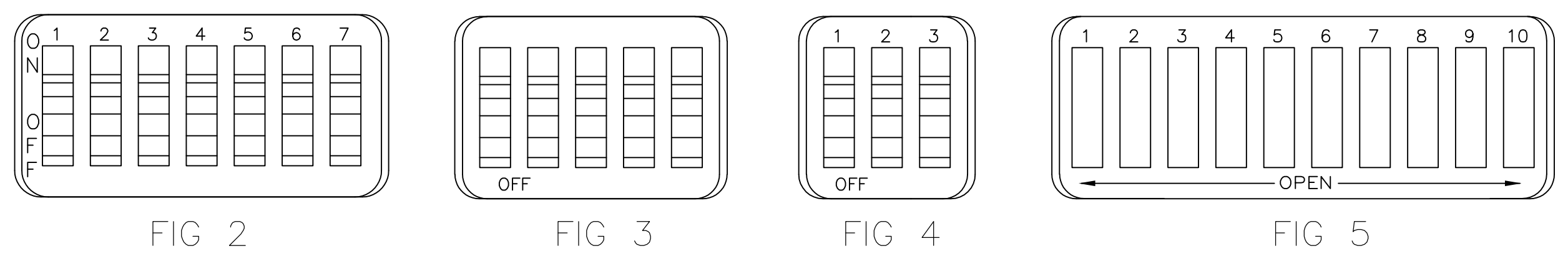


FIG 2

FIG 3

FIG 4

FIG 5

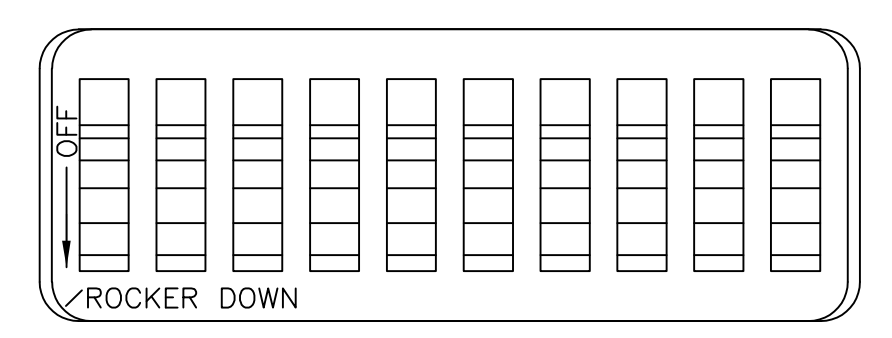


FIG 6

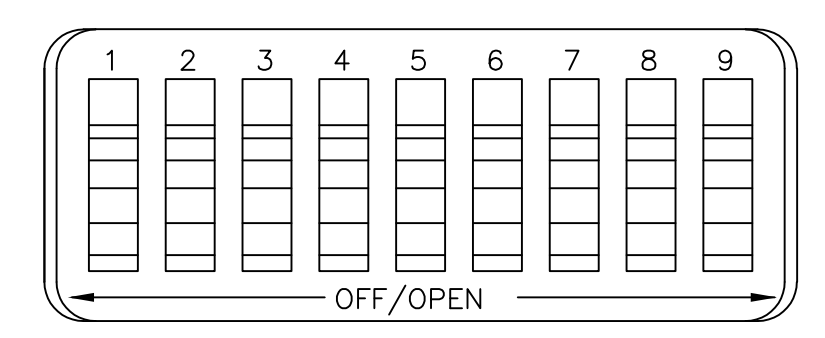


FIG 7

FIG	INCHES	NO OF POSN	PART NO.
OBSOLETE	FIG 6	1.08	10
	FIG 7	.58	5
		.48	4
OBSOLETE	FIG 5	.88	8
		.98	9
	FIG 2	.68	6
		.58	5
OBSOLETE	FIG 3	.48	4
		.88	8
	FIG 5	1.08	10
OBSOLETE	FIG 3	.88	8
		.58	5
OBSOLETE	NONE	1.08	10
		1.28	12
	AS SHOWN	1.08	10
		.98	9
		.88	8
		.78	7
		.68	6
		.58	5
		.48	4
		1.28	12
		.38	3
		.28	2
AS SHOWN	1.08	10	
	.98	9	
	.88	8	
	.68	6	
	.58	5	
	.48	4	
TOP MARKING	A	NO OF POSN	PART NO.

THIS DRAWING IS A CONTROLLED DOCUMENT.

DIMENSIONS: INCHES	TOLERANCES UNLESS OTHERWISE SPECIFIED:	DIN BSV 08JAN2005	Tyco Electronics Corporation
0 PLC ± -	1 PLC ± -	CIK 13SEP05	Harrisburg, PA 17105-3608
2 PLC ± -	3 PLC ± .005	APVD M SARVER 13SEP05	NAME
4 PLC ± -	ANGLES ± -	PRODUCT SPEC	SWITCH ASSY, DIP, TYPE C, 7100 SERIES, SPST, STANDARD
MATERIAL SEE NOTES	FINISH SEE NOTES	APPLICATION SPEC	SIZE CAGE CODE DRAWING NO
		WEIGHT	A1 00779 C=5435640
		CUSTOMER DRAWING	SCALE 4:1 SHEET 1 OF 1 REV B1