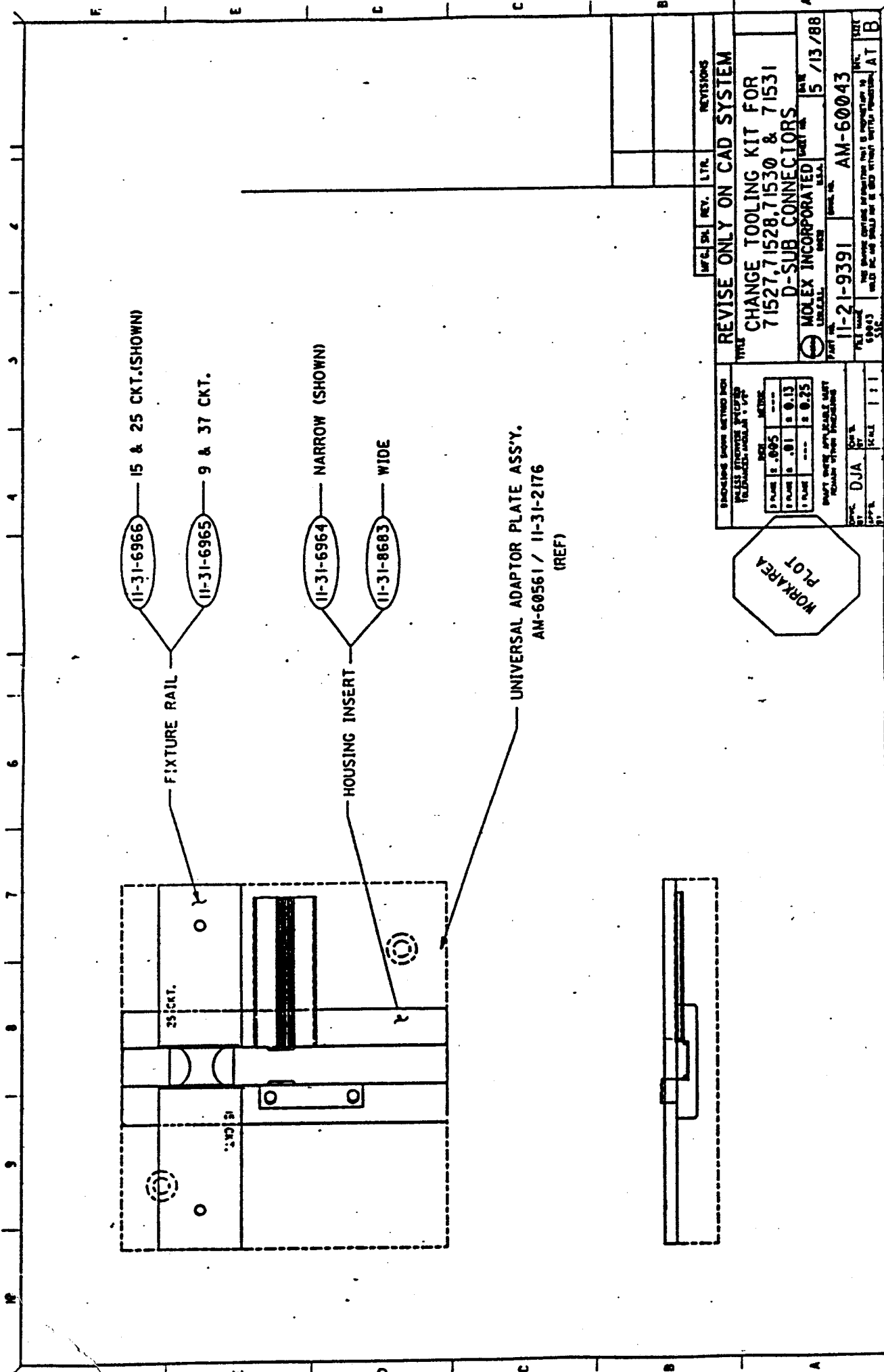


AM-60026-C

11-20 -1165

Assembling 71527-71531 Connectors Using AM-60043 (11-21-9391)
Change Parts Kit (See Fig. 3)

1. Place AM-60043-1 (11-31-6964) housing insert into large slot in fixture plate.
2. Place AM-60561-2 (11-31-2178) cable stop on to housing insert (locate in dowel holes).
3. Place AM-60561-4 (11-31-2180) cable guide in slot perpendicular to housing insert.
4. Place appropriate fixture rail on fixture plate (in dowel holes) and locate so contoured edge lines up with edge of pocket in housing insert and appropriate ckt. no. towards front (11-31-6965 for 9 & 37 ckt., 11-31-6966 for 15 & 25 ckt.).
5. Load pre-assembled connector into housing insert with cover facing down and load with appropriate end towards cable stop.
6. Place cable on approx. centerline of cable insert with outside edge of cable running along side fixture rail and slide cable and insert toward connector. Insert should butt up against connector and cable should then pass through slot in connector and stop against cable stop. The fixture rail will square off the cable with the connector. (NOTE: Cable will not touch fixture rail - there will be a .010 clearance.)
7. Press until closed and locking tabs are set.



PART NO. 11-21-9391		REV. 5	LTR.	REV. 13/88
REVISE ONLY ON CAD SYSTEM				
CHANGE TOOLING KIT FOR 71527, 71528, 71530 & 71531 D-SUB CONNECTORS				
MOLEX INCORPORATED		DATE	5 / 13 / 88	
11-21-9391		AM-60043		
THE ABOVE LISTED INFORMATION IS FOR INFORMATION ONLY AND SHOULD NOT BE USED WITHOUT WRITTEN PERMISSION AT B				

DIA. 0.095		0.01	0.13
DIA. 0.095		0.01	0.13
DIA. 0.095		0.01	0.13

NOTE: THESE DIMENSIONS APPLY TO ALL DIMENSIONS UNLESS OTHERWISE SPECIFIED

BY: DJA

DATE: 11/11

SCALE: 1:1

PLANT: KOREA

TOOL KIT CONFIGURATION FOR:
AM-60026-C

