

PLEASE CHECK WWW.MOLEX.COM FOR LATEST PART INFORMATION

Part Number: [5013340000](#)
Status: **Active**
Overview: [picoclasp](#)
Description: 1.00mm (.039") Pitch Pico-Clasp™ Wire-to-Board Crimp Terminal, 28-32 AWG, Lead-free, Tin Plating, Reel

Documents:

[3D Model](#) [Product Specification PS-501940-001 \(PDF\)](#)
[Drawing \(PDF\)](#) [RoHS Certificate of Compliance \(PDF\)](#)
[Product Specification PS-501331-001 \(PDF\)](#)

General

Product Family Crimp Terminals
 Series [501334](#)
 Crimp Quality Equipment Yes
 Overview [picoclasp](#)
 Product Name Pico-Clasp™

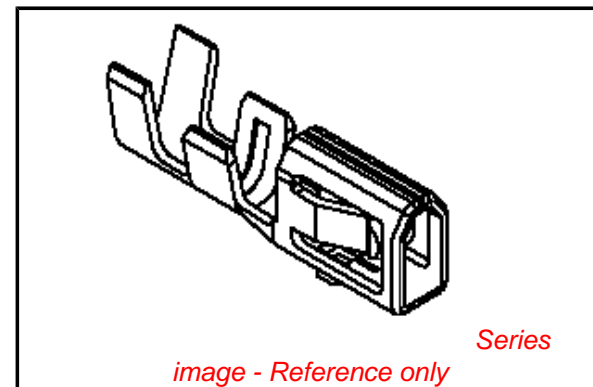
Physical

Gender Receptacle
 Material - Metal Phosphor Bronze
 Material - Plating Mating Tin
 Material - Plating Termination Tin
 Packaging Type Reel
 Plating min: Mating (µin) 40.00
 Plating min: Mating (µm) 1.000
 Plating min: Termination (µin) 40.00
 Plating min: Termination (µm) 1.00
 Termination Interface: Style Crimp or Compression
 Wire Insulation Diameter 0.80mm (.031") max.
 Wire Size AWG 28, 30, 32
 Wire Size mm² N/A

Material Info

Reference - Drawing Numbers

Packaging Specification [SPK-501334-001](#)
 Product Specification [PS-501331-001](#), [PS-501940-001](#), [RPS-501331-001](#),
[RPS-501331-002](#), [RPS-501331-003](#), [RPS-501331-005](#),
[RPS-501331-006](#), [RPS-501331-007](#), [RPS-501568-002](#),
[RPS-501940-001](#), [RPS-501940-002](#), [RPS-501940-003](#),
[RPS-501940-004](#)
 Sales Drawing [SD-501334-001](#)



EU RoHS

**ELV and RoHS
 Compliant**
**REACH SVHC
 Contains SVHC: No**
**Halogen-Free
 Status**

China RoHS



**Need more information on product
 environmental compliance?**

Email productcompliance@molex.com
 For a multiple part number RoHS Certificate of
 Compliance, [click here](#)

Please visit the [Contact Us](#) section for any
 non-product compliance questions.

Search Parts in this Series

[501334Series](#)

Mates With

[501331](#) PCB Header

Use With

[501330](#) Crimp Housing

Application Tooling | FAQ

*Tooling specifications and manuals are
 found by selecting the products below.
 Crimp Height Specifications are then
 contained in the Application Tooling
 Specification document.*

Global

Description	Product #
Fine Adjust™ Applicator for 1.00mm (.039") Pitch Wire-to-Board Crimp Terminal	0639019400
Hand Crimp Tool for 1.00mm (.039")	0638191500

Pico-Clasp™ Wire-
to-Board Crimp
Terminal, 28-32
AWG
T2 Terminator Die 0638583000

Japan

Description **Product #**

Applicator for M211A 5780163000

Bench Press, 28-32

AWG, for 501193

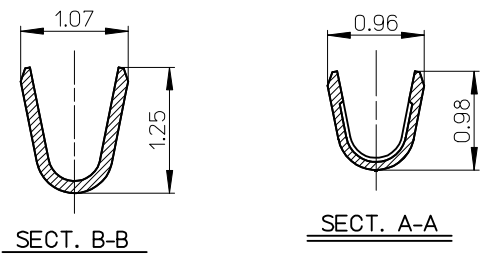
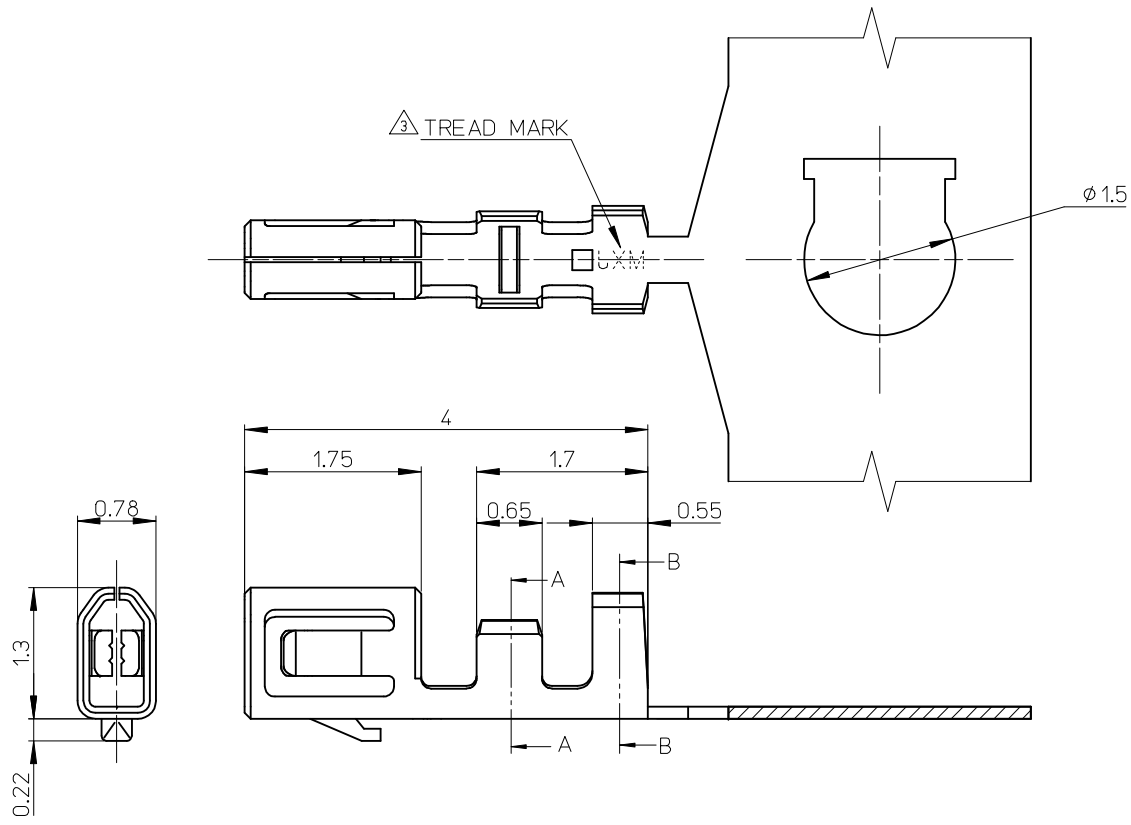
and 501334 Crimp

Terminal

Hand Extraction Tool 5780166000

This document was generated on 05/24/2010

PLEASE CHECK WWW.MOLEX.COM FOR LATEST PART INFORMATION



SECT. B-B

SECT. A-A

NOTES.

- 適合ハウジング: 501330-**** / 501939-****
APPLICABLE HOUSING: 501330-**** / 501939-****
- メッキ仕様
PLATING
錫メッキ: 1.0μmMIN. リフロー処理(前メッキ)
Sn: 1.0μmMIN. REFLOW TREATMENT (PRE-PLATED)
- 刻印は裏面から実施
PUNCH SIDE: OTHER SIDE
MXJ 金型番号(番号無しの製品もあります.)
Die No. (There is Non-Mark Item)
TREAD MARK

501334-0100	バラ状 LOOSE
501334-0000	連鎖状 CHAIN
MATERIAL NO.	端子形状 FORM

MATERIAL リン青銅 PHOSPHOR BRONZE t=0.12	REVISED EC NO.: J2009-0651 DRW: NAKATA 2008/09/16 CHK: D. MATSUMOTO 2008/09/16 APP: NUKITA 2008/09/16	GENERAL TOLERANCES (UNLESS SPECIFIED)	DIMENSION STYLE MM ONLY	SCALE 20:1	DESIGN UNITS METRIC	THIRD ANGLE PROJECTION
FINISH SEE NOTE		10 UNDER ±0.2	DRAWN BY NYOSHIDA	DATE 2004/07/29	TITLE 1.0 WIRE TO BOARD CONN. CRIMP REC TERMINAL (SN) -LEAD FREE-	
WIRE RANGE AWG #28-32		10 OVER 30 UNDER ±0.25	CHECKED BY MYAGI	DATE 2004/07/29	MOLEX INCORPORATED	
INS. RANGE φ0.4-0.8		30 OVER ±0.3	APPROVED BY MIYAZAWA	DATE 2004/07/29	DOCUMENT NO. SD-501334-001	SHEET NO. 1 OF 1
		ANGULAR ±3 °	MATERIAL NO. SEE TABLE	THIS DRAWING CONTAINS INFORMATION THAT IS PROPRIETARY TO MOLEX INCORPORATED AND SHOULD NOT BE USED WITHOUT WRITTEN PERMISSION		
		DRAFT WHERE APPLICABLE MUST REMAIN WITHIN DIMENSIONS				