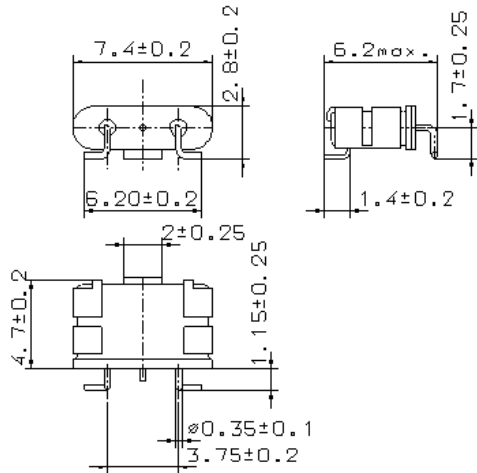


Specification for monolithic crystal filter:

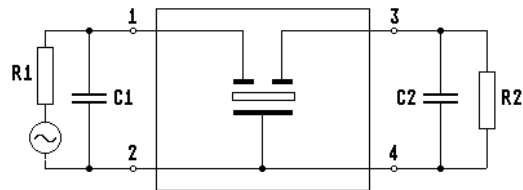
**MQF 21.4-1500/74**

## 1. General

### 1.1. Package:



**GH13S2**



- |                                   |                  |
|-----------------------------------|------------------|
| 1.2. Type name:                   | MQF 21.4-1500/74 |
| 1.3. Number of poles:             | 2                |
| 1.4. Operating temperature range: | -20°C to +70°C   |
| 1.5. Storage temperature range:   | -30°C to +80°C   |

## 2. Electric values

- |   |   |
|---|---|
| 2.1. Nominal centre frequency $f_0$ :                                       | 21.4 MHz                                |
| 2.2. <b>Pass band</b>   |   |
| 2.2.1. Bandwidth between 3 dB - frequencies:                                | $\geq f_0 \pm 7.5$ kHz                  |
| 2.2.2. Ripple:  | $\leq 1.0$ dB at $f_0 \pm 4.0$ kHz      |
| 2.2.3. Insertion loss:<br>( measured on smallest attenuation in pass band ) | $\leq 3.0$ dB                           |
| 2.3. <b>Stop band</b>   |   |
| 2.3.1. $f_0 \pm 25$ kHz   | $\geq 15$ dB                            |
| 2.3.2. $f_0 - 910$ kHz  | $\geq 70$ dB                            |
| 2.4. Terminating impedance R//C ( input and output ):                       | 1500 $\Omega$ // 2.5 pF                 |
| 2.5. Maximum drive level:   | 0 dBm                                   |
| 3. Marking:   | M 214A<br>VI date code                  |
| 4. Environment conditions:  | Corresponding to Vectron standard CF001 |

Edited by: \_\_\_\_\_ date: \_\_\_\_\_ name: \_\_\_\_\_