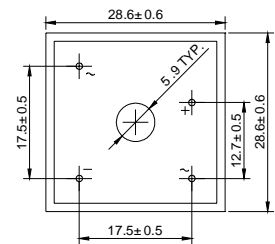
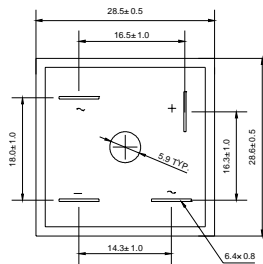
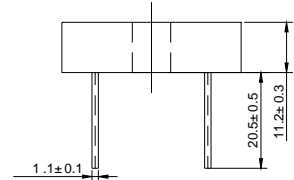
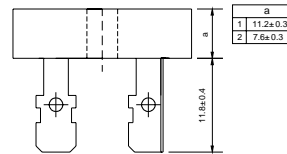


**KBPC**

**KBPC-W**



Dimensions in millimeters

## Features

- ◇ Rating to 1000V PRV
- ◇ 500 Amperes surge capability
- ◇ High efficiency
- ◇ Electrically isolated metal case for maximum heat dissipation
- ◇ Mounting: thru hole for # 8 screw Mounting

## MAXIMUM RATINGS AND ELECTRICAL CHARACTERISTICS

Ratings at 25°C ambient temperature unless otherwise specified.

Single phase, half wave, 60 Hz, resistive or inductive load. For capacitive load, derate by 20%.

		KBPC(W) 50005	KBPC(W) 5001	KBPC(W) 5002	KBPC(W) 5004	KBPC(W) 5006	KBPC(W) 5008	KBPC(W) 5010	UNITS
Maximum recurrent peak reverse voltage	$V_{RRM}$	50	100	200	400	600	800	1000	V
Maximum RMS voltage	$V_{RMS}$	35	70 <sub>KBPC(W)</sub>	140	280	420	560	700	V
Maximum DC blocking voltage	$V_{DC}$	50	100	200	400	600	800	1000	V
Maximum average forward Output current @ $T_A=25^\circ C$	$I_{F(AV)}$	50.0							A
Peak forward surge current 8.3ms single half-sine-wave superimposed on rated load	$I_{FSM}$	500.0							A
$I^2t$ Rating for fusing @ $T_j=25^\circ C$	$I^2t$	1037.5							A <sup>2</sup> S
Maximum instantaneous forward voltage @ 25.0 A	$V_F$	1.1							V
Maximum reverse current @ $T_A=25^\circ C$ at rated DC blocking voltage @ $T_A=100^\circ C$	$I_R$	10.0 1.0							$\mu A$ mA
Typical Junction Capacitance per leg(note1)	$C_j$	300							pF
Typical thermal resistance per leg	$R_{\theta JC}$	0.7							°C/W
Operating junction temperature range	$T_J$	- 55 ---- + 150							°C
Storage temperature range	$T_{STG}$	- 55 ---- + 150							°C

## Ratings AND Characteristic Curves

FIG1:Io-Tc Curve

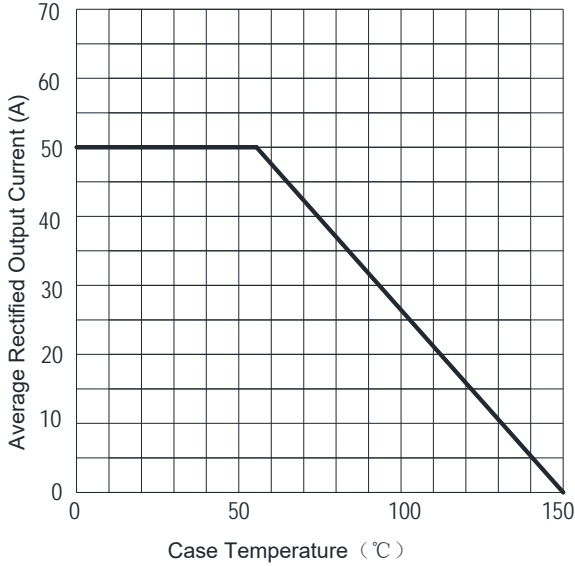


FIG2:Surge Forward Current Capability

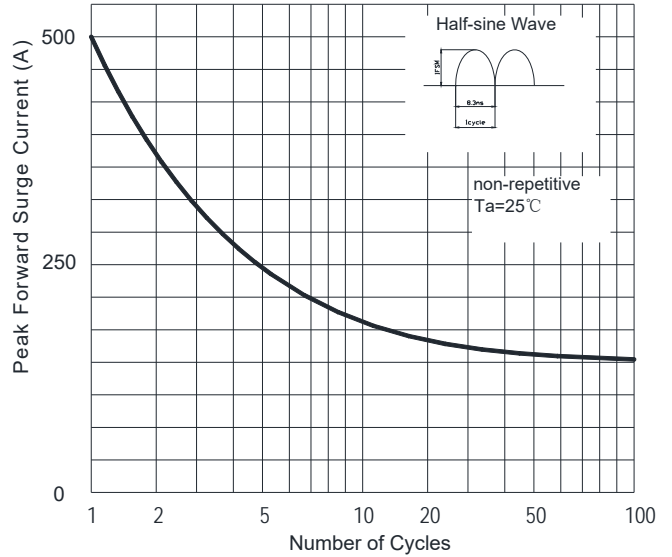


FIG3:Instantaneous Forward Voltage

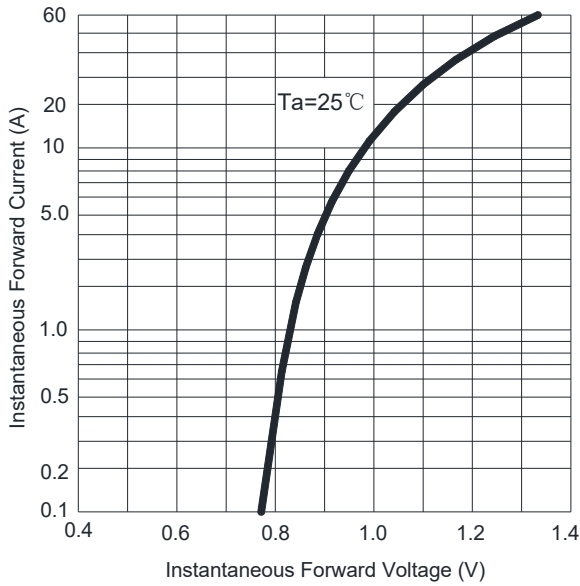


FIG4:Typical Reverse Characteristics

