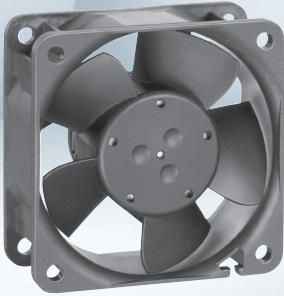




DC axial fans

Series 600 NU 60 x 60 x 25 mm



Highlights:

- Motor protection against reverse polarity and locking.
- Air exhaust over struts
- Connection via 310 mm strands AWG 22, TR 64, bared and tin-plated
- Ingress protection rating of IP68

Material: Housing: Fiberglass-reinforced PBT composite
Impeller: Fiberglass-reinforced PA composite

Direction of rotation: Clockwise, seen on rotor

| Nominal Data | | Air flow | Nominal voltage | Voltage range | Sound pressure level | Sound power level | Ball bearings | Power input | Speed | Temperature range | Mass | Ingress Protection Rating | UL Approval | Curves |
|--------------|--|----------|-----------------|---------------|----------------------|-------------------|---------------|-------------|-------|-------------------|------|---------------------------|-------------|--------|
| Type | | CFM | VDC | VDC | dB(A) | Bel(A) | | Watts | RPM | °C | g | | | |
| 612 NHU-181 | | 25.3 | 12 | 8...15 | 37 | 5.3 | Yes | 1.8 | 5600 | -20...70 | 66 | IP68 | Yes | 1 |
| 614 NHU | | 25.3 | 24 | 18...26 | 37 | 5.3 | Yes | 2.1 | 5600 | -20...70 | 66 | IP68 | Yes | 1 |
| 614 NHHU-286 | | 33.0 | 24 | 18...26 | 41 | 5.7 | Yes | 2.9 | 6850 | -20...70 | 66 | IP68 | Yes | 2 |

Curves

