

DAISY-2X2-W

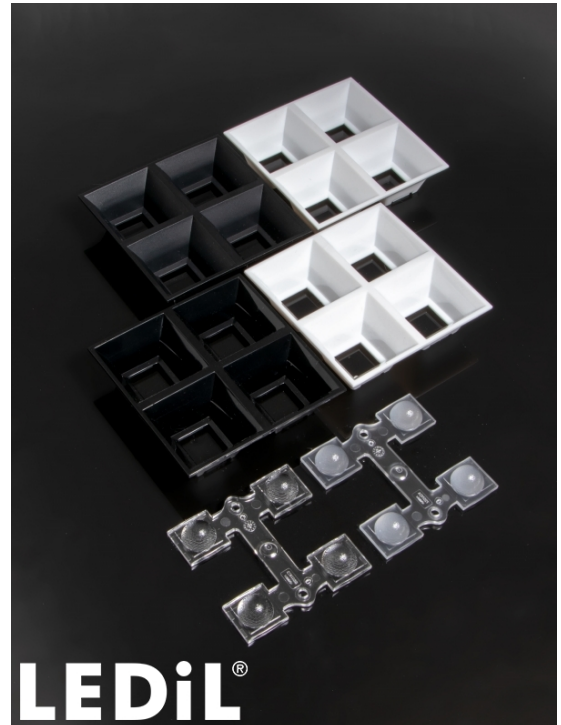
~50° wide beam

TECHNICAL SPECIFICATIONS:

Dimensions	79.5 mm
Height	21 mm
Fastening	pin, screw, clips
ROHS compliant	yes ⓘ

MATERIAL SPECIFICATIONS:

Component	Type	Material	Colour	Finish
C16867_DAISY-2X2-W	Multi-lens	PMMA	clear	
C16866_DAISY-2X2-SHD	Shade	PC	black	gloss

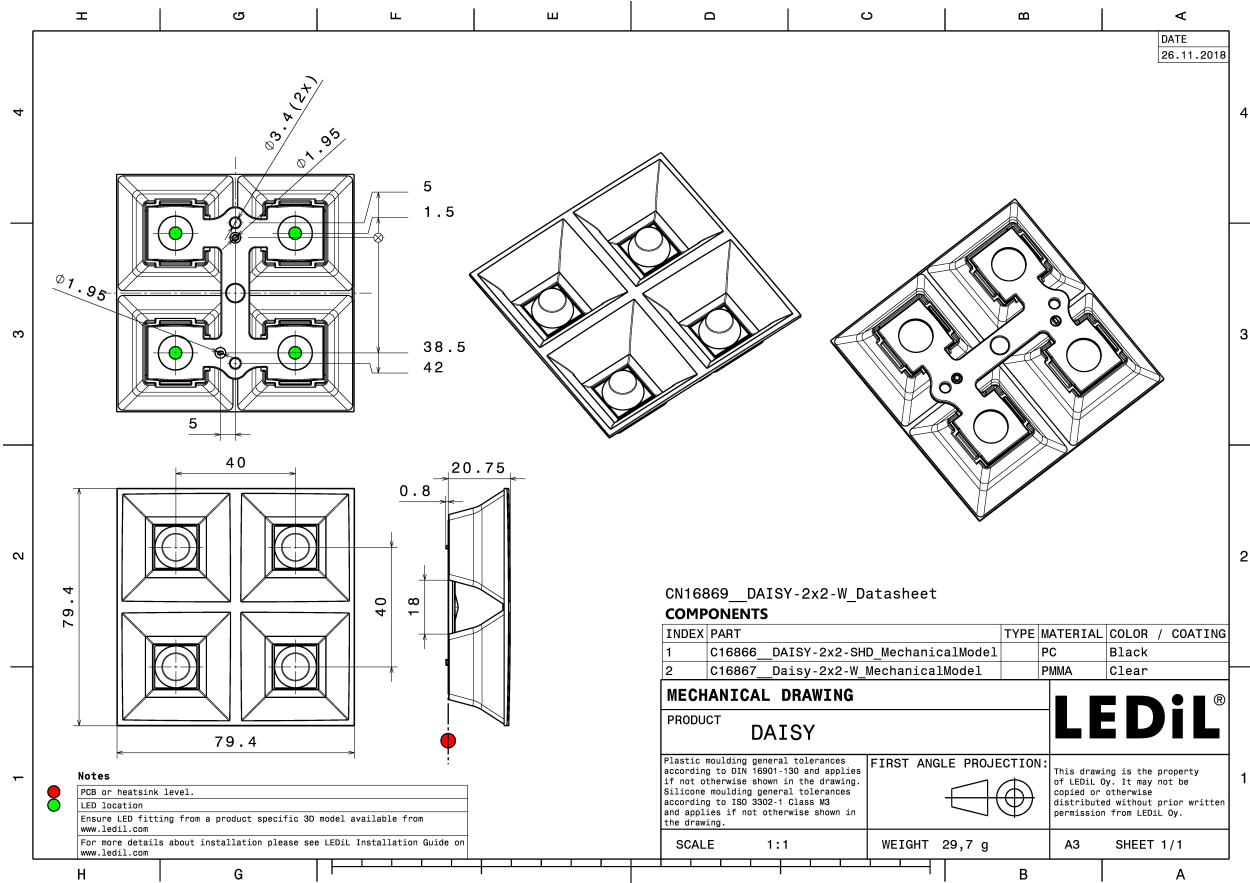


ORDERING INFORMATION:

Quantities for one set:

Multi-lens	1
Shade	1

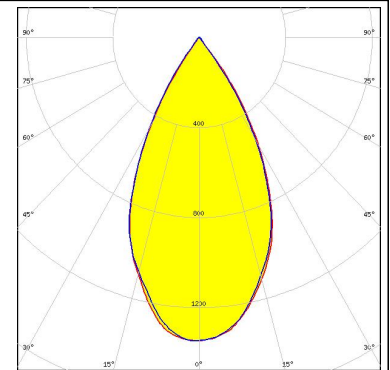
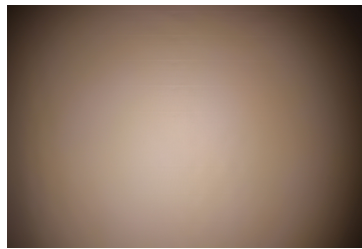
Component		Qty in box	MOQ	MPQ	Box weight (kg)
C16867_DAISY-2X2-W	Multi-lens	440	440	20	5.7
» Box size: 400 x 300 x 300 mm					
C16866_DAISY-2X2-SHD	Shade	186	440	20	4.8
» Box size: 400 x 300 x 300 mm					



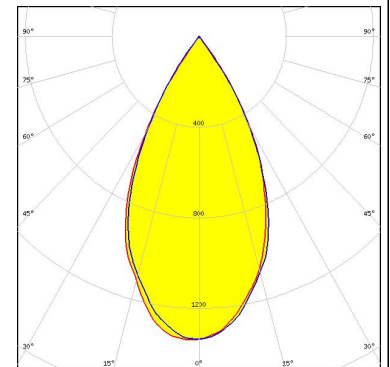
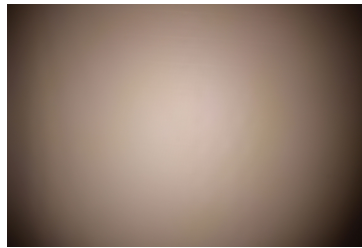
PHOTOMETRIC DATA (MEASURED):



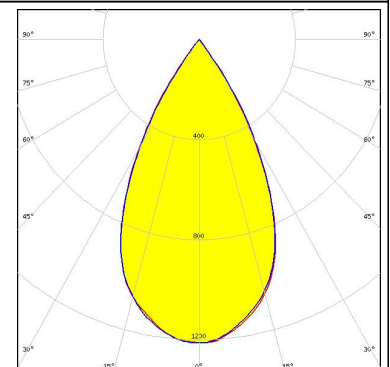
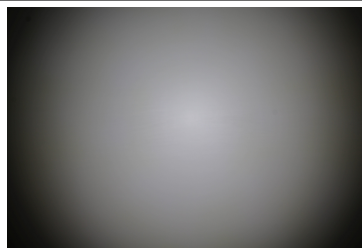
LED NF2W757G-MT (Tunable White)
 FWHM 53.0°
 Efficiency 96 %
 Peak intensity 1.3 cd/lm
 LEDs/each optic 1
 Light colour Tunable White
 Required components:
 C16875_DAISY-2X2-SHD-WHT



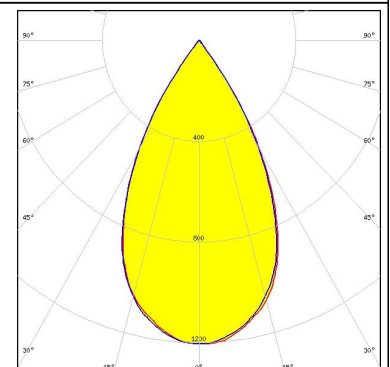
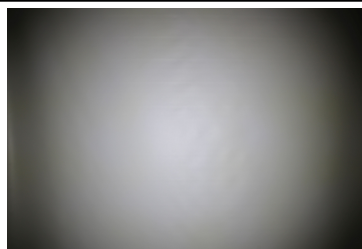
LED NF2W757G-MT (Tunable White)
 FWHM 53.0°
 Efficiency 91 %
 Peak intensity 1.3 cd/lm
 LEDs/each optic 1
 Light colour Tunable White
 Required components:
 C16866_DAISY-2X2-SHD



LED LM28xB Series
 FWHM 55.0°
 Efficiency 89 %
 Peak intensity 1.2 cd/lm
 LEDs/each optic 1
 Light colour White
 Required components:
 C17483_DAISY-2X2-SHD-MATT



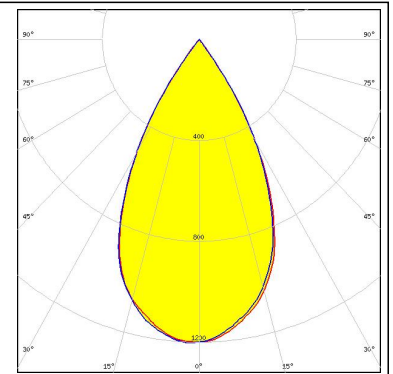
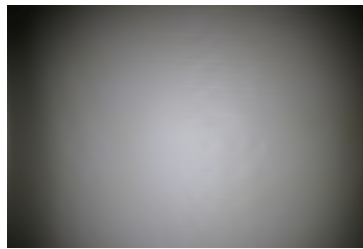
LED LM28xB Series
 FWHM 56.0°
 Efficiency 92 %
 Peak intensity 1.2 cd/lm
 LEDs/each optic 1
 Light colour White
 Required components:
 C16875_DAISY-2X2-SHD-WHT



PHOTOMETRIC DATA (MEASURED):

SAMSUNG

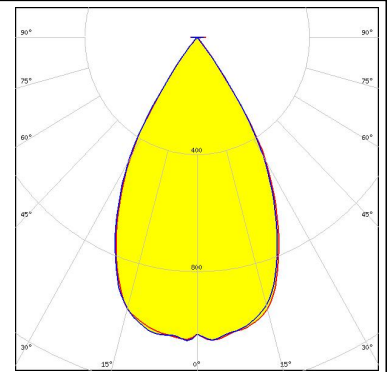
LED LM28xB Series
FWHM 55.0°
Efficiency 90 %
Peak intensity 1.2 cd/lm
LEDs/each optic 1
Light colour White
Required components:
C16866_DAISY-2X2-SHD



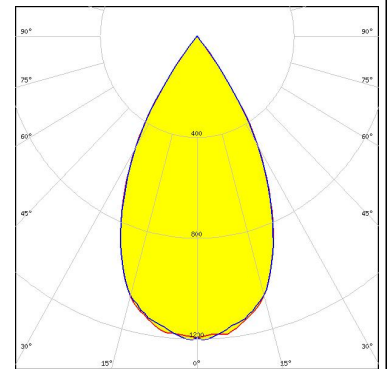
PHOTOMETRIC DATA (SIMULATED):



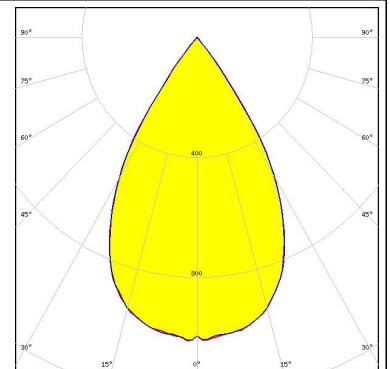
LED XD16
FWHM 58.0 + °
Efficiency 86 %
LEDs/each optic 1
Light colour White
Required components:
 C16866_DAISY-2X2-SHD



LED NF2W757G-MT (Tunable White)
FWHM 56.0°
Efficiency 91 %
Peak intensity 1.2 cd/lm
LEDs/each optic 2
Light colour Tunable White
Required components:
 C16866_DAISY-2X2-SHD



LED NF2W757G-MT (Tunable White)
FWHM 62.0°
Efficiency 90 %
Peak intensity 1 cd/lm
LEDs/each optic 4
Light colour Tunable White
Required components:
 C16866_DAISY-2X2-SHD



GENERAL INFORMATION:

NOTE: The typical beam angle will be changed by different color, chip size and chip position tolerance. The typical total beam angle is the full angle measured where the luminous intensity is half of the peak value.

MATERIALS:

As part of our continuous research and improvement processes, and to ensure the best possible quality and availability of our products, LEDiL reserves the right to change material grades without notice.

PRODUCT DATA USER AGREEMENT AND DISCLAIMER:

The measured data in the provided downloadable LEDiL Product Datasheets and Mechanical 2D-Drawings is rounded and provided as reference for planning. LEDiL Oy's optical specifications have been verified by conducting performance testing of the products in accordance with the company's quality system. The reported data are averaged results of multiple measurements with typical variation. LEDiL Oy reserves the right to without prior notification make changes and improvements to its products.

LEDiL Oy assumes neither warranty, nor guarantee nor any other liability of any kind for the contents and correctness of the provided data. The provided data has been generated with highest diligence but the provided data may in reality not represent the complete possible variation range of all intrinsic parameters. Therefore, in certain cases a deviation from the provided data could occur.

LEDiL Oy reserves the right to undertake technical changes of its products without further notification which could lead to changes in the provided data. LEDiL Oy assumes no liability of any kind for the possible deviation from any provided data or any other damage resulting from the usage of the provided data.

The user agrees to this disclaimer and user agreement with the download or usage of the provided files.

LEDiL Oy

Joensuunkatu 13
FI-24240 SALO
Finland

LEDiL Inc.

228 West Page Street
Suite D
Sycamore IL 60178
USA

Local sales and technical support

[www.ledil.com/
where_to_buy](http://www.ledil.com/where_to_buy)

Shipping locations

Salo, Finland
Hong Kong, China

Distribution Partners

[www.ledil.com/
where_to_buy](http://www.ledil.com/where_to_buy)