

6

5

4

3

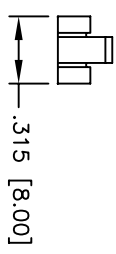
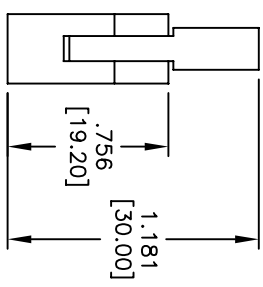
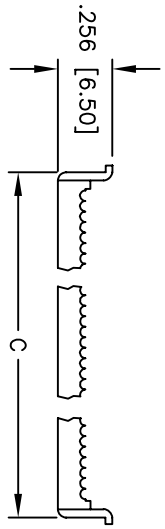
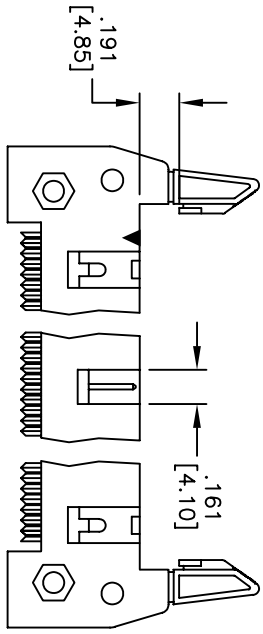
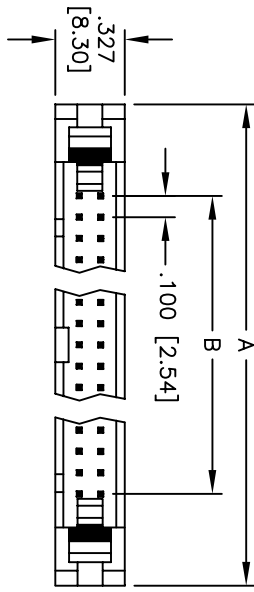
2

1

APPROVED: _____

DATE: _____ TITLE: _____

| Rev | AWO # | Description | Date | Appr |
|-----|-------|--------------|----------|------|
| - | | RELEASED | 3/9/07 | |
| A | | REVISED DIM. | 10/31/08 | |



SPECIFICATIONS:

Material: Insulator: PBT, glass reinforced, rated UL 94V-0

Insulator color: Gray

Contacts: Copper Alloy

Plating: Gold flash over nickel on contact area, Tin over copper underplate on IDC area.

Electrical:

Current rating: 3 Amp max.

Contact resistance: 30 mohms max.

Insulation resistance: 5,000 Mohms min @ 1000V DC.

Dielectric withstanding voltage: 1000 VAC for 1 minute

Operating temperature: -55°C to +105°C

Environmental: Lead free, RoHS compliant

Positions: 10, 14, 16, 20, 24, 26, 30, 34, 40, 50, 60, 64
 A = .100 [2.54] x No. of Positions+ .760 [19.30]
 B = .100 [2.54] x No. of Spaces
 C = .100 [2.54] x No. of Positions+ .185 [4.70]

UNLESS OTHERWISE SPECIFIED
 ALL DIMENSIONS ARE INCHES [MM]
 TOLERANCES: EXCEPT AS NOTED
 INCHES HOLE SIZES
 .X ± .10 ØXX ± .10
 .XX ± .020 ØXXX ± .015
 .XXX ± .015 ØXXXX ± .010

ADAM TECH

909 Rahway Avenue, Union, NJ 07083
 Phone: 908-687-5000 Fax: 908-687-5710

TITLE: XX Position Shrouded Header Straight
 IDC, .100 [2.54] Pitch, Short Latches

| | | | | |
|-----------|------|--------|------------|------|
| APPROVALS | DATE | SIZE | PART NO. | REV. |
| DRAWN | BW | 3/9/07 | MHF-XX-SGS | A |
| CHECKED | | | | |
| APPROVED | | | | |



6

5

4

3

2

1