



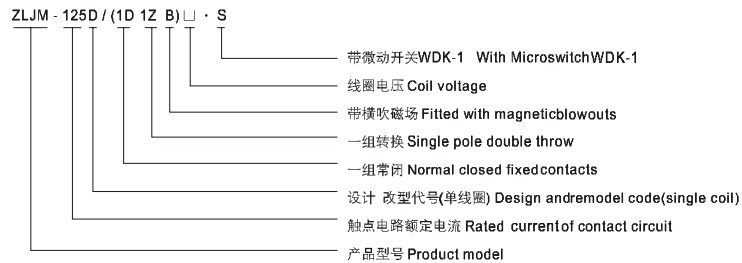
DONGYA ELECTRONIC



ZLJM-125D

Series contactors
系列接触器

1. 产品型号含义 Nomination(nomogram)

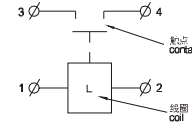


2. 使用条件 Use conditions required

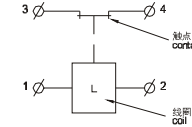
环境温度Ambient temperature: -25~+40°C
 相对湿度Relative humidity: +20°C达98%(upto 98% at +20°C)
 固定处的振动频率 Vibration freq. atthe fixed position:
 3g、1~50Hz 振幅 0.5mm
 3g、1~50Hz ampl 0.5mm
 安装方向 Mounting directions: 任意 Optional

3. 线路原理图 Circuit diagram

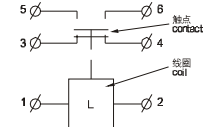
ZLJM-125D/1D
一路常开型(SPSTN.O.)
3、4为触点接线端(3、4 contact terminal)
1、2为线圈接线端(1、2 coil terminal)
L为线圈(L is winding)



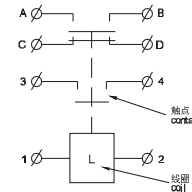
ZLJM-125D/1D
一路常闭型(SPST N.C.)
3、4为触点接线端(3、4 contact terminal)
1、2为线圈接线端(1、2 coil terminal)
L为线圈(L is winding)



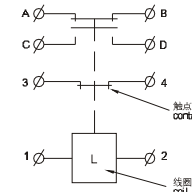
ZLJM-125D/1Z
一组转换型(SPDT)
3、4、5、6为触点接线端
(3、4、5、6 contact terminal)
1、2为线圈接线端(1、2 coil terminal)
L为线圈(L is winding)



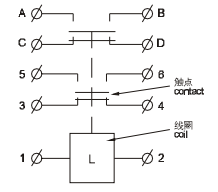
ZLJM-125D/1D · S
一路常开型(SPSTN.O.)
带微动开关(With Microswitch)
3、4为触点接线端(3、4 contact terminal)
1、2为线圈接线端(1、2 coil terminal)
L为线圈(L is winding)
A、B、C、D为微动开关接线端
(A、B、C、D aux.contact terminal)



ZLJM-125D/1D · S
一路常闭型(SPST N.C.)
带微动开关(With Microswitch)
3、4为触点接线端(3、4 contact terminal)
1、2为线圈接线端(1、2 coil terminal)
L为线圈(L is winding)
A、B、C、D为微动开关接线端
(A、B、C、D aux.contact terminal)



ZLJM-125D/1Z · S
一组转换型(SPDT)
带微动开关(With Microswitch)
3、4、5、6为触点接线端
(3、4、5、6 contact terminal)
1、2为线圈接线端(1、2 coil terminal)
L为线圈(L is winding)
A、B、C、D为微动开关接线端
(A、B、C、D aux.contact terminal)

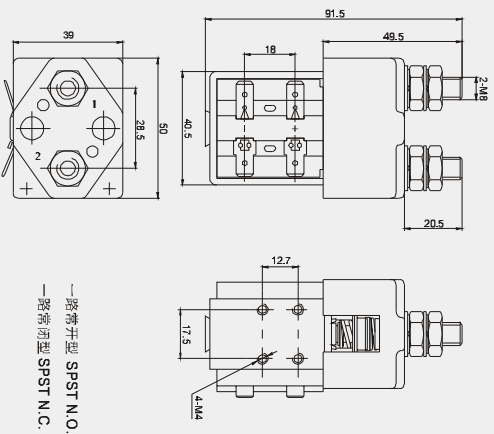


4. 简要技术数据 Basic technical data

编号 NO.	参数名称 Parameters	产品代号 Product code	
		ZLJM-125D系列 series	
1	线圈额定电压 Rated coil volt(VDC)	12、24、30、48、60、72、120等(etc)	
2	线圈功耗 Coil Power dissipation(W)	8-13	
3	触点电路额定电压 Rated volt of contact circuit(V DC)	60	
4	触点电路额定负载电流 Rated load current of contact circuit(A)	125A	
5	(20±5)°C下, 冷态动作电压(V) Operating volt in cold state at(20±5)°C	吸合 Pick-up	不大于线圈额定电压的70% Not above 70% of rated coil volt
		释放 Release	线圈额定电压的(5~30)% (5~30)% of rated coil volt
6	额定电压下最大动作时间(ms)(线圈不带抑制电器) Max. operating time at rated volt(ms) (Coil with nosuppression circuit)	30	
7	抗电强度 Puncture(volt) strength	50Hz 1000V AC 1min	
8	额定负载下触点接触压降 Rated load current of contact circuit	不大于80mV not above 80mV	
9	电寿命 Electric life	20,000 Ops	
10	机械寿命 Mechanical life	10万次 100,000 Ops.	
11	工作规范 Working duty	连续 Continuous	

外形安装图
Configurational mounting diagram

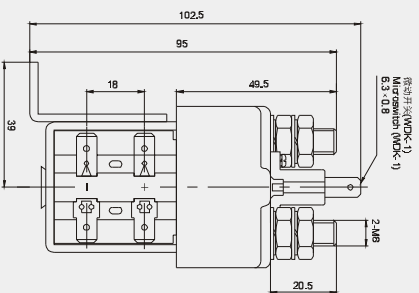
125D外型安装图
125D Configurational mounting diagram



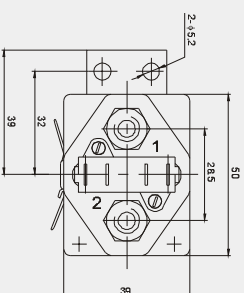
一路常开型 SPST N.O.
一路常闭型 SPST N.C.

带微动开关WDK-1和安装支架外形安装图
with microswitch WDK-1 and mounting bracket configurational mounting diagram

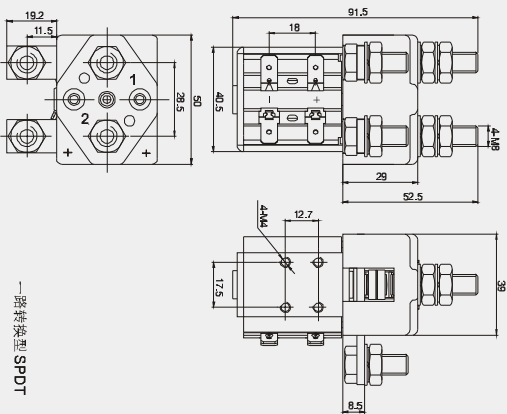
125D安装外型安装图
125D mounting bracket configurational mounting diagram



安装方式一
The first mounting method

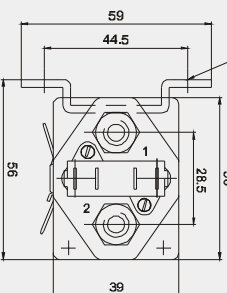


125 1Z外型安装图
125 1ZConfigurational mounting diagram



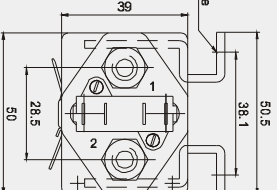
一路转换型 SPDT

Slots 5.2 Wide



安装方式二
The second mounting method

Slots 6 Wide



安装方式三
The third mounting method