

Power Splitter/Combiner

ZA4PD-4+

4 Way-0° 50Ω 2000 to 4200 MHz

Maximum Ratings

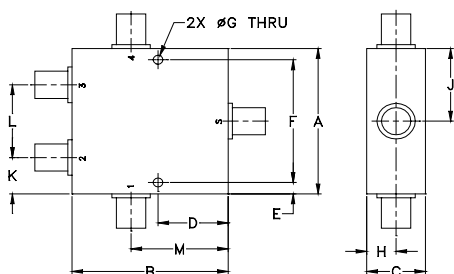
Operating Temperature	-55°C to 100°C
Storage Temperature	-55°C to 100°C
Power Input (as a splitter)	10W max.
Internal Dissipation	0.375W max.
DC Current	1.6 A (400mA for each port)

Permanent damage may occur if any of these limits are exceeded.

Coaxial Connections

SUM PORT	S
PORT 1	1
PORT 2	2
PORT 3	3
PORT 4	4

Outline Drawing



Outline Dimensions (inch/mm)

A	B	C	D	E	F	G	
2.00	2.00	.75	.90	.156	1.688	.125	
50.80	50.80	19.05	22.86	3.96	42.88	3.18	
H	J	K	L	M			wt
.38	1.00	.50	1.00	1.25			grams
9.65	25.40	12.70	25.40	31.75			150.00

Features

- wideband, 2000 to 4200 MHz
- good isolation, 25 dB typ.
- up to 10W power input as splitter

Applications

- MMDS
- wireless communication



N-Type version shown
CASE STYLE: DD52

Connectors	Model
SMA	ZA4PD-4-S+
N-TYPE	ZA4PD-4-N+

+RoHS Compliant

The +Suffix identifies RoHS Compliance. See our web site for RoHS Compliance methodologies and qualifications

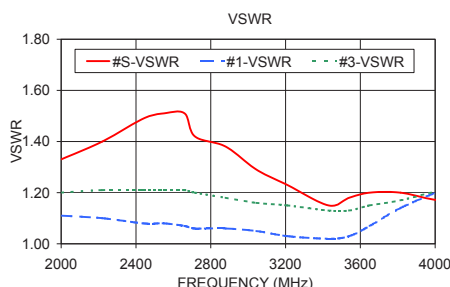
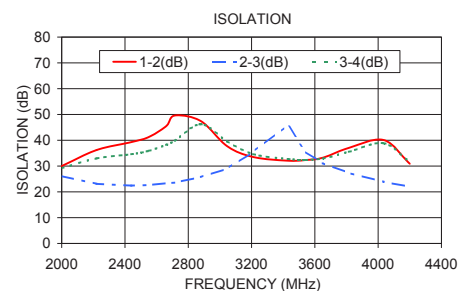
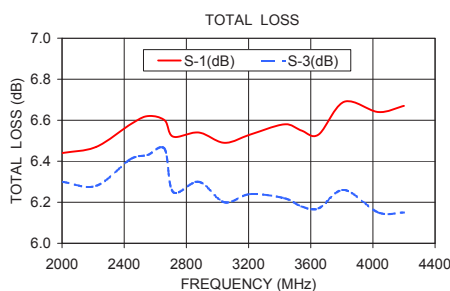
Electrical Specifications

FREQ. RANGE (MHz)	ISOLATION (dB)		INSERTION LOSS (dB) ABOVE 6.0 dB		PHASE UNBALANCE (Degrees)	AMPLITUDE UNBALANCE (dB)
	Typ.	Min.	Typ.	Max.	Max.	Max.
f_L-f_U						
2000-4200	25	16	0.5	1.0	16	0.8

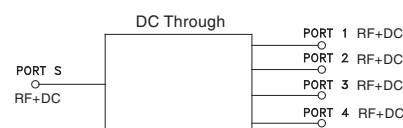
Typical Performance Data

Freq. (MHz)	Total Loss ¹ (dB)				Amp. Unbal. (dB)	Isolation (dB)			Phase Unbal. (deg.)	VSWR S	VSWR 1	VSWR 2	VSWR 3	VSWR 4
	S-1	S-2	S-3	S-4		1-2	2-3	3-4						
2000.00	6.44	6.28	6.30	6.44	0.16	29.99	26.13	29.17	1.49	1.33	1.11	1.20	1.20	1.10
2220.00	6.47	6.24	6.28	6.48	0.24	36.22	23.10	32.98	1.58	1.40	1.10	1.21	1.21	1.10
2440.00	6.58	6.37	6.41	6.59	0.22	39.29	22.41	34.60	1.59	1.49	1.08	1.23	1.21	1.10
2550.00	6.62	6.40	6.43	6.63	0.23	41.23	22.65	35.90	2.05	1.51	1.08	1.24	1.21	1.09
2660.00	6.60	6.44	6.46	6.61	0.17	45.46	23.35	38.23	1.96	1.51	1.07	1.23	1.21	1.09
2715.00	6.52	6.21	6.25	6.53	0.32	49.59	23.57	39.84	1.65	1.42	1.06	1.23	1.20	1.09
2880.00	6.54	6.26	6.30	6.55	0.29	47.42	25.73	46.22	1.96	1.38	1.06	1.21	1.18	1.08
3045.00	6.49	6.16	6.20	6.50	0.34	37.74	28.98	39.58	2.02	1.29	1.05	1.19	1.16	1.08
3210.00	6.53	6.19	6.24	6.54	0.35	33.51	35.51	34.63	2.21	1.23	1.03	1.18	1.15	1.06
3430.00	6.58	6.21	6.22	6.55	0.38	32.07	45.95	32.73	2.11	1.15	1.02	1.17	1.13	1.03
3540.00	6.55	6.14	6.18	6.55	0.42	32.32	35.52	32.51	2.49	1.18	1.03	1.17	1.13	1.00
3650.00	6.53	6.12	6.17	6.54	0.42	33.22	31.12	32.91	2.64	1.20	1.07	1.18	1.15	1.04
3815.00	6.69	6.22	6.26	6.67	0.47	37.05	27.33	35.53	2.77	1.20	1.14	1.20	1.17	1.10
4035.00	6.64	6.12	6.15	6.65	0.53	40.08	23.88	38.84	3.02	1.17	1.21	1.23	1.21	1.17
4200.00	6.67	6.10	6.15	6.68	0.58	30.89	21.99	31.59	3.20	1.20	1.26	1.24	1.23	1.24

1. Total Loss = Insertion Loss + 6dB splitter loss.



electrical schematic



Notes

- Performance and quality attributes and conditions not expressly stated in this specification document are intended to be excluded and do not form a part of this specification document.
- Electrical specifications and performance data contained in this specification document are based on Mini-Circuit's applicable established test performance criteria and measurement instructions.
- The parts covered by this specification document are subject to Mini-Circuit's standard limited warranty and terms and conditions (collectively, "Standard Terms"); Purchasers of this part are entitled to the rights and benefits contained therein. For a full statement of the Standard Terms and the exclusive rights and remedies thereunder, please visit Mini-Circuit's website at www.minicircuits.com/WCLStore/terms.jsp

