

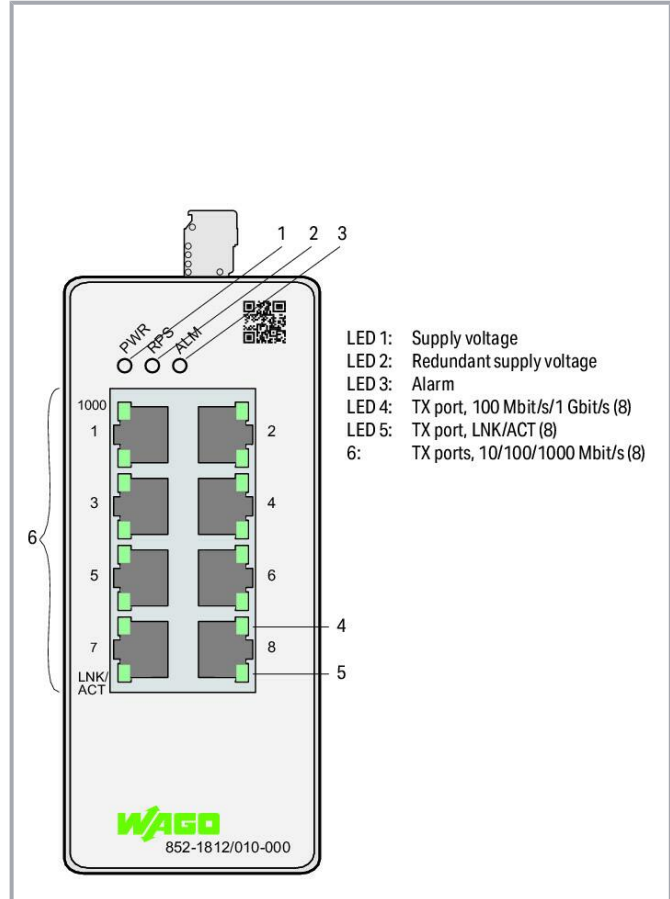
Data sheet | Item number: 852-1812/010-000 **NEW**
 Lean Managed Switch; 8-Port 1000BASE-T; light gray



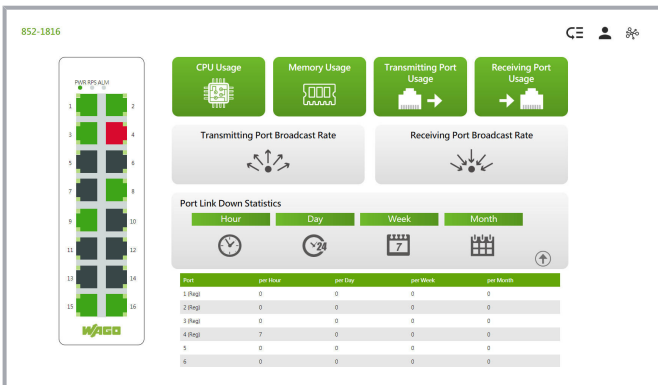
www.wago.com/852-1812/010-000



Color:



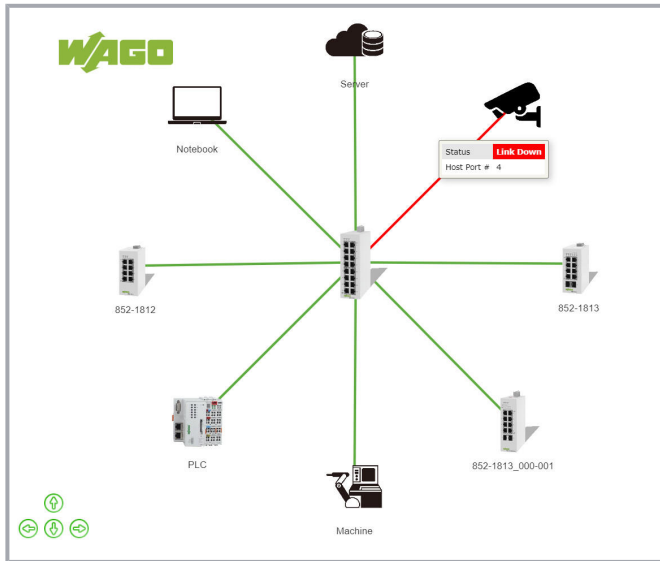
- LED 1: Supply voltage
- LED 2: Redundant supply voltage
- LED 3: Alarm
- LED 4: TX port, 100 Mbit/s/1 Gbit/s (8)
- LED 5: TX port, LNK/ACT (8)
- 6: TX ports, 10/100/1000 Mbit/s (8)



Subject to changes. Please also observe the further product documentation!

WAGO Kontakttechnik GmbH & Co. KG
 Hansastr. 27
 32423 Minden
 Phone: +49571 887-0 | Fax: +49571 887-169
 Email: info.de@wago.com | Web: www.wago.com

Do you have any questions about our products?
 We are always happy to take your call at +49 (571) 887-44222.



Item description

The 852-1812/010-000 is a configurable industrial ETHERNET switch with eight 10/100/1000BASE-T ports. Enclosed in a rugged housing, this switch offers both a redundant power supply and relay-based function monitoring. This device also streamlines network management: Commissioning and diagnostics are intuitive and can be performed without extensive IT knowledge. The topology map clearly displays the switch and connected devices. Key diagnostic information is displayed on the diagnostics dashboard. The following functions increase the robustness, availability and security of the network.

Security:

Network segmentation per IEEE802.1Q (max. 5 VLANs), authentication of network devices per IEEE802.1X, firewall functions using the access-control list (max. 32 entries)/service control, port security

Availability:

Rapid Spanning Tree Protocol (RSTP) for meshed and ring networks, ETHERNET Ring Protection Switching (ERPS) for up to two rings per switch, loop detection and storm control on each port

Configuration/Diagnostics/Maintenance:

Port mirroring, Modbus® registers, SNMP v3, SNMP trap events, alarm threshold, port statistics, backup and restore, system log, syslog server, command line interface with SSH/Telnet, topology map and dashboard

Data

Technical data

Switching mode	Store-and-forward; non-blocking
Number of 1000BASE-T ports	8
Communication standards	IEEE 802.3 10BASE-T IEEE 802.3u 100BASE-TX/FX IEEE 802.3ab 1000BASE-T IEEE 802.3x Flow Control IEEE 802.1d Spanning Tree Protocol (STP) IEEE 802.1w Rapid Spanning Tree Protocol (RSTP)

Subject to changes. Please also observe the further product documentation!

WAGO Kontakttechnik GmbH & Co. KG
Hansastr. 27
32423 Minden
Phone: +49571 887-0 | Fax: +49571 887-169
Email: info.de@wago.com | Web: www.wago.com

Do you have any questions about our products?
We are always happy to take your call at +49 (571) 887-44222.



	IEEE 802.1Q VLAN Tagging IEEE 802.1p Prioritization IEEE 802.1X Port Authentication IEEE 802.1ab Link Layer Discovery Protocol (LLDP) IEEE 802.3az Energy Efficient Ethernet ITU-T G8032v1/v2 Ethernet Ring Protection Switching (ERPS)
Redundancy function	Redundant DC power supply; STP; RSTP; ERPSv1/v2 (max. 2 rings per switch, max. 16 switches per ring, switching time < 800 ms)
Configuration options	DIP switch for signal contact Web-Based Management Command Line Interface SNMPv1/v2c/v3
Diagnostics	Signal contact; Modbus TCP; port status; port statistics; port load; traffic monitor; syslog; SNMP traps; loop detection; diagnostics dashboard; topology map
Security	Access Control List mit max. 32 Einträgen; Port Security; Authentication IEEE 802.1X
MAC table (size)	8000 addresses
Jumbo frame size	10000. Byte
Supply voltage	24 ... 48 VDC; (±15 %); 24 ... 48 VDC (UL)
Power consumption (max.)	10 W
ESD (contact/air discharge)	8 KV / 15 KV
Baud rate	Copper cable: 10/1000 Mbit/s
VLAN	Port-based and tag-based (max. 5 VLANs)

Connection data

Connection technology: communication/fieldbus	Copper cable: 8 x RJ-45
---	-------------------------

Physical data

Width	50 mm / 1.969 inch
Height	116 mm / 4.567 inch
Depth	100 mm / 3.937 inch

Mechanical data

Weight	550 g
Color	light gray
Conformity marking	CE

Subject to changes. Please also observe the further product documentation!

Environmental requirements


Surrounding air temperature (operation)	-10 ... 60 °C
Surrounding air temperature (storage)	-40 ... 85 °C
Protection type	IP30
Relative humidity (without condensation)	95 %
Mounting type	DIN-35 rail
Vibration resistance	per IEC 60068-2-6
Shock resistance	per IEC 60068-2-27
EMC immunity to interference	per EN 61000-6-2
EMC emission of interference	per EN 61000-6-4

Commercial data

PU (SPU)	1 Stück
Packaging type	BOX
Country of origin	TW
GTIN	4055144111279
Customs tariff number	85044082900

Approvals / Certificates

UL-Approvals

Logo	Approval	Additional Approval Text	Certificate name
	UL Underwriters Laboratories Inc. (ORDINARY LOCATIONS)	UL 61010-2-201	E175199

Downloads

Documentation

Manual

Lean Managed Switch 8-Port 1000BASE-T	V 1.0.0 2021. 6. 1.	pdf 13.6 MB	Download
--	------------------------	----------------	----------

Bid Text

852-1812/010-000	xml	Download
------------------	-----	----------

Subject to changes. Please also observe the further product documentation!



X81 - Datei	8 B	
852-1812/010-000 docx - Datei	docx 31 B	Download

Runtime Software

Firmware

Firmware Lean-Managed-Switch; 8-Port 1000BASE-T; lichtgrau	V 02 2021. 7. 21.	zip 8.4 MB	Download
--	----------------------	---------------	----------

Environmental Product Compliance

Compliance Search

Environmental Product Compliance 852-1812/010-000 Lean Managed Switch; 8-Port 1000BASE-T; light gray	URL	Download
---	-----	----------

Installation Notes

Subject to changes. Please also observe the further product documentation!