

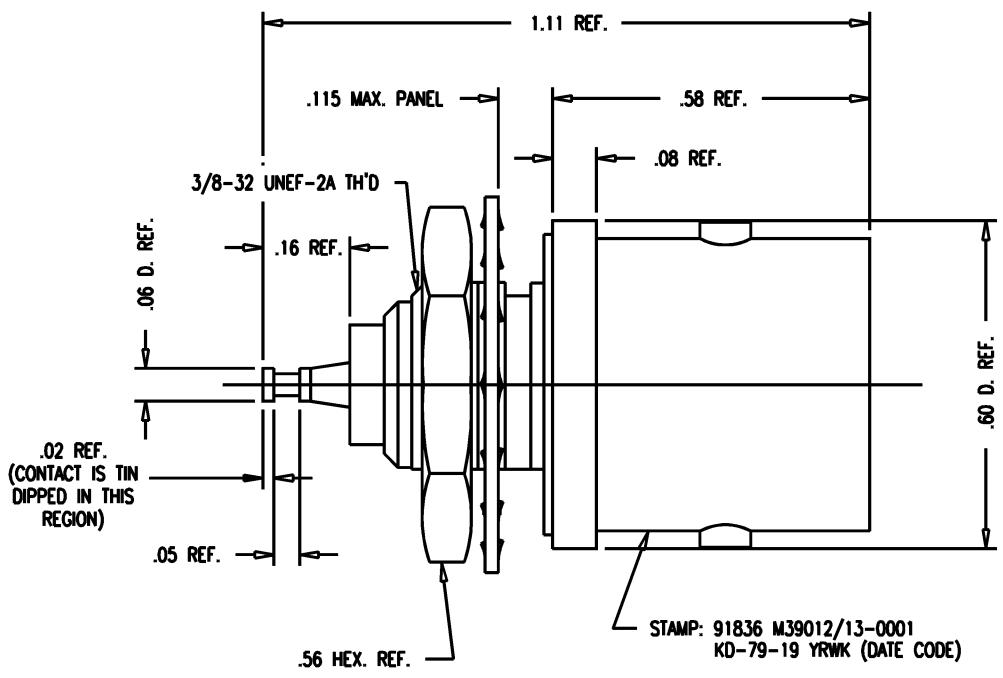
DASH NO.	M CODE	MADE FROM
----------	--------	-----------

SD

M39012/13-0001

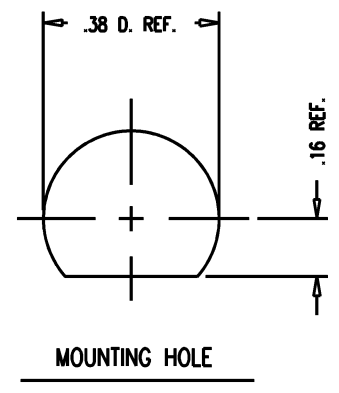
REVISIONS

ISSUE	CHANGES
0	ER 7424 AME 05/02/69
1	CN 23168 E GJG 03/24/82
2	CN 32263 A LNM 06/07/90
3	CN 38697 C BDH 10/21/02



NOTES:

- MATERIALS:
INSULATOR-TEFLON, ASTM-D-1457
GASKET-SILICONE RUBBER, ZZ-R-765
LOCKWASHER-PHOSPHOR BRONZE, QQ-B-750
CENTER CONTACT-BER. COP., ASTM-B-196
ALL OTHER METAL PARTS-BRASS, QQ-B-626
- FINISHES:
CENTER CONTACT-GOLD PLATE PER MIL-G-45204
ALL OTHER METAL PARTS-SILVER PLATE PER QQ-S-365
- ELECTRICAL CHARACTERISTICS:
NOMINAL IMPEDANCE-50 OHMS
FREQUENCY RANGE-DC TO 11 GHZ
WORKING VOLTAGE-1000 VRMS



KAM1208

SCALE	4:1		
APPROX SURFACE AREA			
KD-79-13			
USED ON			
REF:			
RECEPTACLE, BULKHEAD, C			
DRAWN	KH	DATE	06/13/91
DESIGN	MJB	DATE	06/13/91
APPR.		DATE	

SD



M39012/13-0001

UNLESS OTHERWISE SPECIFIED

1. TOLERANCES: FRACTIONS & 2 PLACE DECIMALS ± .010 3 PLACE DECIMALS ± .004 ANGLES ± 1° CONCENTRICITY OF ANY 2 DIAMETERS MAY NOT EXCEED HALF THE SUM OF THEIR TOLERANCES.	2. REMOVE ALL BURRS, BREAK SHARP EDGES .005 MAX. 3. NO FILLETS PERMITTED. 4. SURFACE ROUGHNESS 63 MICRONS RMS MAX. 5. ALL DIMENSIONS PRIOR TO PLATING. 6. ALL PLATING IN ACCORDANCE WITH KER 10004.	7. ALL LEAD THREADS TO BE CHAMFERED 45° TO ROOT DIAMETER. * CRITICAL DIMENSIONS
--	---	--