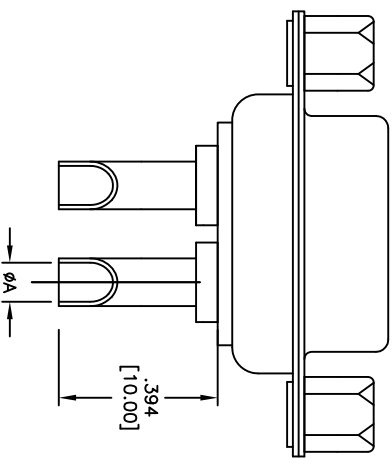
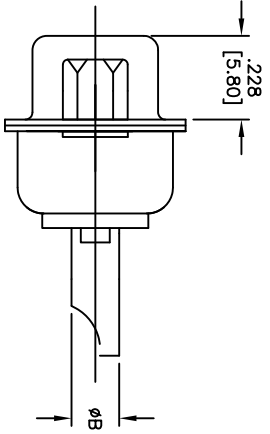
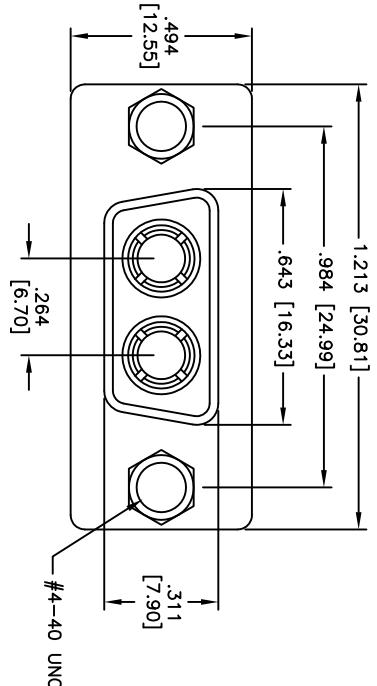


Rev	AWO #	Description	Date	Appr
-	10145	RELEASED	4/02/10	

APPROVED: \_\_\_\_\_  
 DATE: \_\_\_\_\_ TITLE: \_\_\_\_\_



ADAM TECH PART NO.	CURRENT RATING	WIRE SIZE	DIMENSION	
			A	B
D2W2-SDP-6-JS	40 AMPS	8-10 AWG	Ø.181 [4.60]	Ø.216 [5.50]
D2W2-SDP-5-JS	30 AMPS	10-12 AWG	Ø.146 [3.70]	Ø.181 [4.60]
D2W2-SDP-4-JS	20 AMPS	12-14 AWG	Ø.106 [2.70]	Ø.141 [3.60]
D2W2-SDP-3-JS	10 AMPS	16-18 AWG	Ø.067 [1.70]	Ø.098 [2.50]

**SPECIFICATIONS:**

- Material: Insulator: PBT, 30% glass reinforced, rated UL 94V-0
- Insulator color: Black
- Contacts: Brass
- Shell: Steel, Tin plated
- Hardware: Brass, Nickel plated
- Plating: Gold flash over Nickel underplate overall
- Electrical: Operating voltage: 250 VAC max
- Current rating: 10 – 40 Amps max (See Chart)
- Contact resistance: 10 mohms max
- Insulation resistance: 5,000 Mohms min
- Dielectric withstanding voltage: 1,000 VAC for 1 minute
- Temperature Rating: Operating temperature: -55°C to +150°C
- Environmental: Lead free, RoHS compliant

**ADAM TECH**

909 Rahway Avenue, Union, NJ 07083  
 Phone: 908-687-5000 Fax: 908-687-5710

TITLE: D-SUB POWER SOCKET, D2W2, STRAIGHT, FEMALE, SOLDER CUP, W/ #4-40 JACK SCREWS

UNLESS OTHERWISE SPECIFIED ALL DIMENSIONS ARE INCHES [MM]	
TOLERANCES: EXCEPT AS NOTED	
.X ± .10	ØX ± .10
.XX ± .020	ØXX ± .015
.XXX ± .015	ØXXX ± .010
APPROVALS	DATE
DRAWN	DY
CHECKED	
APPROVED	

SIZE	PART NO.	REV.
X	D2W2-SDP-X-JS	-
REF: S00019T	SCALE: NTS	SHEET 1 OF 1