

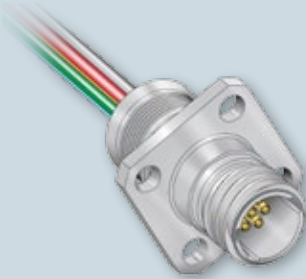
Series 811 Mighty Mouse HD with Double-Start ACME Mating Thread and .050" pitch (1.27mm) TwistPin Contact

Series 811 Mighty Mouse HD connector is a high density version of the Mighty Mouse Series 801 connector. The Series 811 connector features a quick-mating, damage-resistant double-start thread with the Glenair twistpin contact system for increased circuit density.

SERIES 811 MIGHTY MOUSE HD CONNECTOR SELECTOR



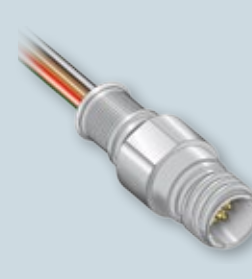
Pre-Wired Plugs
Page 8



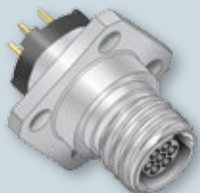
Square Flange Receptacles
Page 10



Jam Nut Receptacles
Page 12



In-Line Receptacles
Page 9



Square Flange PCB Receptacles
Page 15



Jam Nut PCB Receptacles
Page 14



Overmolded Cordsets
Page 17

Jam Nut Tightening Tool

Tightening tools fit Series 811 spanner nuts supplied with jam nut receptacle connectors. Use with square drive torque wrench. Torque to 20-25 inch-pounds (2.2 – 2.8 N m). Carbon steel, nickel plated.



Shell Size	Jam Nut Tool Part Number	Drive Square
5	600-146-02	1/4" Drive
6	600-146-03	1/4" Drive
7	600-146-05	3/8" Drive
8	600-146-05	3/8" Drive
9	600-146-06	3/8" Drive

Dimensions in Inches (millimeters) are subject to change without notice.