

TACT SWITCH

Operation: SMT/中型立式 防水 轻触开关 [柄长/操作力可定制]



LTEM NO.: TS-1160S-□□ (Series)

(L6.20mm × W6.20mm TACT-SWITCH)

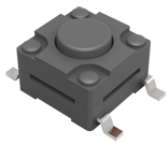
表面貼裝 SMT

正向操作

精密部品 NICETY

可靠 STABILIZE

適合環保 RoHS

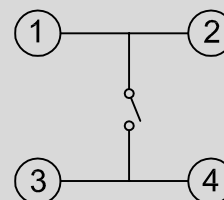


Technical parameter

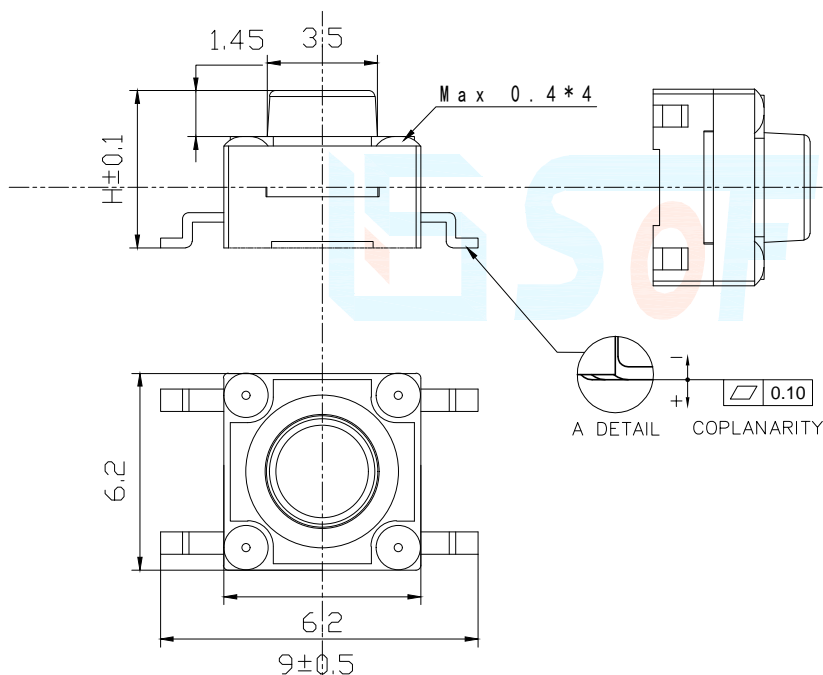
PROJECT	LEVEL	A[better product]		B[average product]	
Electrical	Contact Rating	0.25A, 24V DC			
	Initial Contact Resistance	50mΩ max.			
Properties	Insulation Resistance	100MΩ min.500V DC	Skey/PD: 100MΩ min.300V DC		
	Withstand Voltage	300V AC for 1 minute	250 V AC for 1 minut		
Durable Performance	There No Load	100,000 Cycles	75,000 Cycles		
	Rated Load	80,000 Cycles	50,000 Cycles		
	Storage temp.	-35℃~+75℃(Operating Temp:)			
	Operating Force	2.6N. (1N.=100gram-force)			
	Heat Rrsistance	IR Reflow:255℃, 5sec. Manual :350℃, 3sec.			

Material declaration		
No.	NAME	Description
① A	按柄	PBT/ABS 塑料
② B	盖板	PA6T (Black)热塑性尼龙
③ C	缓层	硅胶片
④ D	贴纸	PI 聚酰亚胺
⑤ E	簧片	镀银&不锈钢/SUS304
⑥ F	底座	PA6T (Black)热塑性尼龙
⑦ G	嵌件	镀银&H62 黄铜

CIRCUIT DIAGRAM



Unit:mm



H
5.0
5.5
6.0
6.5
~
21.0

TRAVEL:0.25

P.C.B LAYOUT

