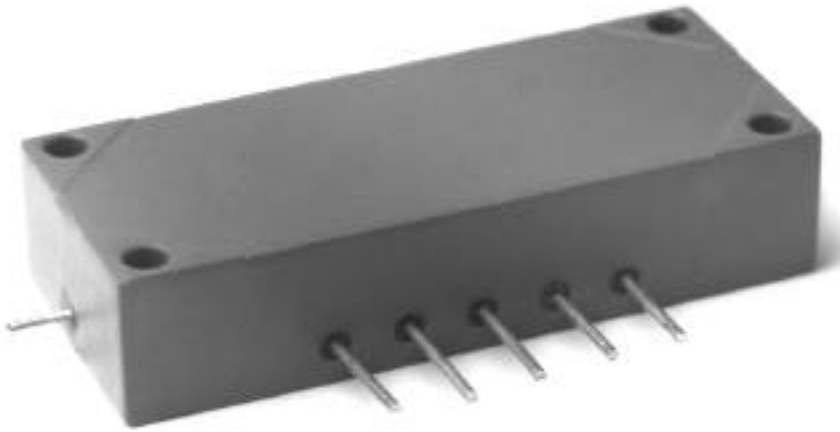


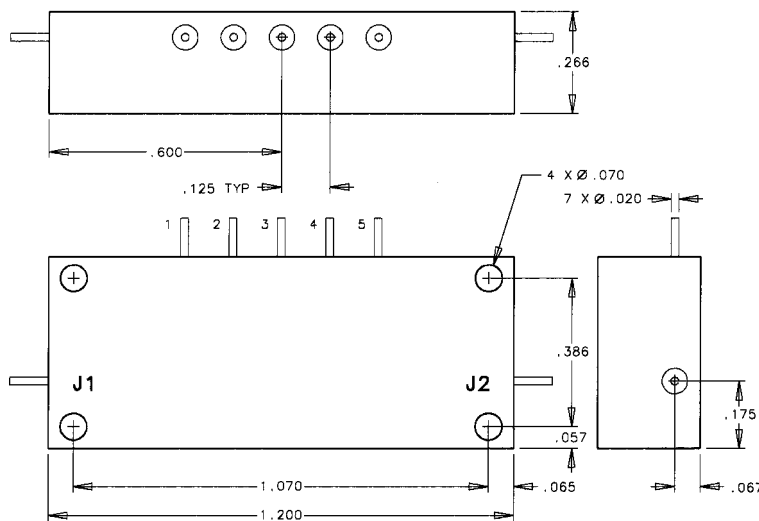
SINGLE POLE, SINGLE THROW DROP-IN MODULES WITH DRIVERS



ELECTRICAL CHARACTERISTICS

| PART # | TYPE | FREQ RANGE GHz | LOSS dB | ISO dB | VSWR | SWITCH SPEED ns | RF POWER dBm | DC SUPPLY Volts |
|--------|--------|----------------|---------|--------|-------|-----------------|--------------|-----------------|
| 6008 | SPST N | .025-.035 | 4.0 | 90 | 1.5:1 | 1 | 10 | +5, -5 |
| 6009 | SPST N | .005-.5 | 7.0 | 60 | 1.5:1 | 2 | 10 | +5, -5 |

PACKAGE OUTLINE



DESCRIPTION

High performance, low distortion switches ideal for use in sensitive receivers where high speed and low video feed-through are required. These drop-in modules eliminate some of the problems associated with GaAs FET switches, such as spurious noise and inconsistent rise and fall times. They are also designed to protect low noise amplifiers. The switch and driver are extremely compact, making these modules ideal for applications where space is at a premium. Hermetic, military/industrial design.

ADDITIONAL FEATURES (#6008)

- Video feed-through: 10 mV peak

CONNECTORS

- Pin

OPERATING ENVIRONMENT

- Operating Temperature: -55 to +125°C
- Storage Temperature: -65 to +150°C
- Impedance: 50 ohm
- Control: Transistor-Transistor Logic (TTL)

APPLICATIONS

- Satellite receivers
- Electronic Intelligence (ELINT)
- Tracking radar